



School of Business



**Better Business –
Better Society**



Merger of three leading Finnish universities

1849

Helsinki University of Technology

1871

University of Art and Design Helsinki

1911

Helsinki School of Economics

Aalto
University
2010



Aalto University

Our purpose: Shaping a sustainable future.

Aalto University is founded on high-quality research, education, impact as well as shared values of responsibility, courage and collaboration.

We solve global challenges by bringing talent together across science, art, technology, and business.





Long-term

SHAPING A SUSTAINABLE FUTURE

PURPOSE



Research

Breakthroughs in and across science, art, technology and business



Education

Sparkling the game changers of tomorrow



Impact

Innovative solutions to tackle global grand challenges



Focus of development



Driving excellence

World-class clusters of excellence, bringing talent together



Future-led learning

Greater societal responsibility in degree education and continuous learning with elevated student experience



Inspiring ecosystem

Building an internationally prominent ecosystem



Solutions for sustainability

Using our strengths to address global challenges



Radical creativity

Globally leading community for new thinking



Entrepreneurial mindset

Fostering a strong entrepreneurial culture



Enabling our success

Investing in our community & people, infrastructures & campus, and services

VALUES AND

WAYS OF WORKING



Responsibility

We act sustainably for the wellbeing of all



Courage

Taking on challenges with agility, creativity and passion, we aim high.



Collaboration

A diverse and empowered community that shines by working together



Aalto-yliopisto
Aalto-universitetet
Aalto University

A background image showing a group of students in a classroom or study environment. In the foreground, a young woman with dark hair, wearing an orange sweater, is looking down and smiling. Behind her, a young man with glasses and a dark blue shirt is also smiling. They appear to be engaged in a collaborative activity, possibly a group project or discussion. A laptop is visible on a table in front of them.

Our community in numbers

12 000

full-time equivalent
degree students

A staff of about **4 000**,
of which nearly **400** are
professors. Share of
international academic
faculty is **40%**.

Each year our students earn about

250 doctoral degrees,

1 800 master's degrees,

1 300 bachelor's degrees and

300 MBA and EMBA certificates.



Aalto-yliopisto
Aalto-universitetet
Aalto University

The background of the slide is a photograph of a modern lecture hall with tiered wooden seating and a curved white ceiling with recessed lighting. A small yellow icon with three horizontal lines is in the top left corner.

Six dynamic schools

School of Arts, Design and Architecture

architecture; art; design; media; film, television and scenography

School of Business

accounting; economics; finance; management studies; marketing; information and service management

School of Chemical Engineering

bioproducts and biosystems; chemistry and materials science; chemical and metallurgical engineering

School of Electrical Engineering

communications and networking; electronics and nanoengineering; electrical engineering and automation; signal processing and acoustics

School of Engineering

built environment; civil engineering; mechanical engineering

School of Science

applied physics; computer science; industrial engineering and management; mathematics and systems analysis; neuroscience and biomedical engineering

The School of Business at a glance

All enrolled students	4090
BSc students	2004
MSc students	1881
Doctoral students	205
Aalto MBA & Aalto Executive MBA students	811
Student exchange agreements with foreign universities worldwide	157
Faculty members *	189
Service personnel	75

Figures as of December 2022

* Not including 103 post docs



School Milestones

1911

Establishment of
private business
school

1950

New main
building
in Helsinki

1974

Transformation to
state university

1989

Establishment of
Mikkeli campus

2010

Merger with
Helsinki
University of
Technology and
University of Art
and Design
Helsinki

2015

BSc studies to
the Aalto
University
main campus
in Otaniemi

2019

New home
in Otaniemi



Vision

To attract and cultivate
global leaders in
business research,
education, and practice.

Triple Crown status

We hold the Triple Crown status: AACSB, AMBA, and EQUIS – an honor held by some 1% of business schools worldwide.



AACSB – The first Nordic business school to earn this prestigious quality label

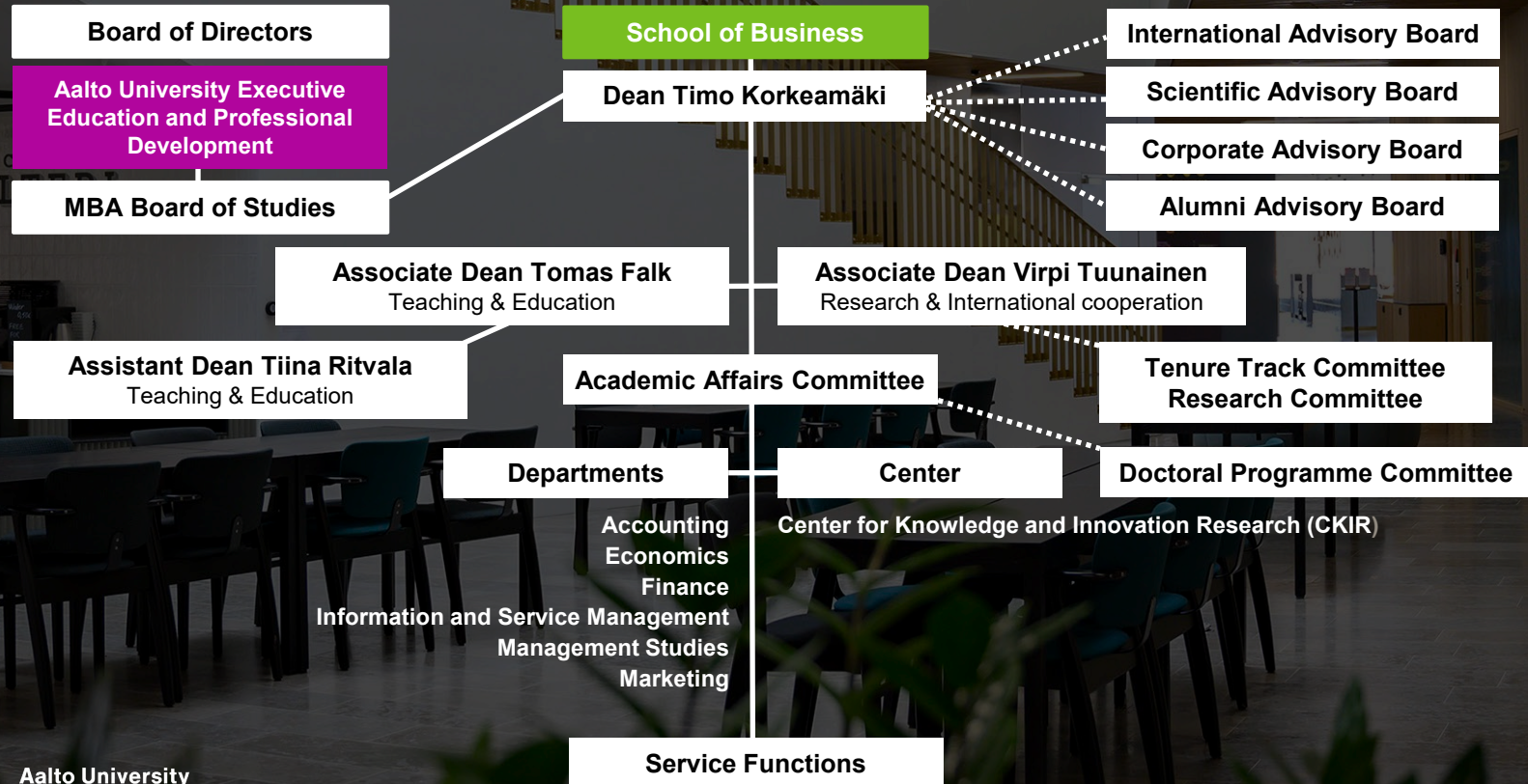


AMBA – Awarded only to schools offering high-quality MBA Programmes



EQUIS – The School is part of the select group of leading business schools with 5-year accreditation

Organisation



Academic Faculty

**80 professorships (tenure track):
assistant, associate, full professors**

**27 lecturers
and research
fellows**

**9 professors
of practice**

**1 executive
in residence**



Matti Liski
Professor,
Economics,
PhD, Helsinki
School of
Economics



Katri Kauppi
Associate
Professor,
Logistics,
PhD, Helsinki
School of
Economics



Matthijs Lof
Associate
Professor,
Finance,
PhD, University
of Helsinki



Johanna Bragge
Principal University
Lecturer,
Information Systems
Science, DSc (Econ.),
Helsinki School of
Economics



Ritva Reinikka
Professor of
Practice,
Economist,
Special Adviser to
Commissioner
Jutta Urpilainen



Taavi Heikkilä
Executive in
Residence,
former SOK
CEO and
vuorineuvos
(honorary title)



Better Business – Better Society

Research

High-quality
research on
important business
& societal
challenges

Learning

Real-life challenges
& multidisciplinary
student learning
experiences in
an international
context

Societal Impact

Contributions to
the business
community & society
at large

Success in Research

84th

In the world

Business & Economics
(THE, Times Higher Education,
2023)

76th

In the world

Business & Management
(QS, 2023)

48th

In the world

Business & Economics
(US News, 2023)



Success in Sustainability work

Best overall school: Institutions committed to a responsible ethos

Institution	Country
WINNERS	-
Aalto University School of Business	Finland
Colorado State University College of Business	US
Iéseg School of Management	France
University of Oxford: Saïd	UK
VU Amsterdam School of Business and Economics	Netherlands



Financial Times (www.ft.com/content/d80984ae-318f-4799-9c83-ea57277d7823)



Future of Work

Creating a world-leading research & practitioner concentration:
focus on new forms of work.

Pulling together multidisciplinary projects and researchers across Aalto and in cooperation with top universities and research institutes.

Serving the Finnish society and economy.

Open online course (MOOC)
launched at <http://futurework.aalto.fi>

**FUTURE
OF WORK**

Teaching and Learning

3

Bachelor's programmes

- **Business (in Finnish, Otaniemi): ~450 students/year**
- **International Business (in English, Mikkeli): ~80 students/year**
- **Economics (in English, Otaniemi): ~40 students/year**

13

Master's programmes (in Otaniemi)

- **Accounting**
- **Business Analytics**
- **Business Law**
- **Creative Sustainability***
- **Economics**
- **Finance**
- **Global Management / CEMS**
- **Information and Service Management**
- **International Design Business Management****
- **People Management and Organizational Development**
- **Marketing**
- **Strategic Management in a Changing World**
- **Sustainable Entrepreneurship**



Teaching and Learning

Problem-based; theories are used to analyse and solve **real-world challenges**:

- Real-life cases
- Business projects
- Hackathons
- Internships
- Theses and teaching cases

Providing more opportunities for **online learning** and multidisciplinary studies



International Student Exchange

Partner Universities

- 157 partner universities in 6 continents and 44 countries
- 94% internationally accredited business schools by AACSB, EQUIS or AMBA
- Member of CEMS and PIM Networks
- 60% of graduates have completed an international minor (exchange semester)





The Most Popular BSc-MSc Study Options in Finnish Universities

Source: Finnish National Agency for Education

Study option

Primary applicants

Business Aalto University	3202
Law University of Helsinki	2149
Medicine University of Helsinki	1657
Psychology University of Helsinki	1378
Business University of Tampere	1340
Medicine University of Tampere	1327
Business University of Turku	1288
Law University of Turku	1166
Business Haaga-Helia University of Applied Sciences	1058
Psychology University of Tampere	927

How satisfied are our students?

BSc: Graduation feedback

(average; scale 2–5 before 2021 and 1–5 as of 2021)*

2019	2020	2021	2022	2023
4.04	4.10	3.99*	3.91	3.97

*The response scale has changed from 1.1.2021 onwards. The average values before and after 2021 are not directly comparable.

- Source: National BSc graduation survey



Societal impact

- Key roles in societal debates and policy-making
- Extensive collaboration with corporations and other organisations in research & teaching
- Knowledge-sharing events & mechanisms
- Strong alumni engagement
- Executive education and life-wide learning



Unique Portfolio of Executive Education and Professional Development



Aalto University Executive Education and Professional Development (Aalto EE) enables opportunities for lifewide learning and educate the game changers of the future; current executives, the next generation of leaders, and experts with an impact on business and society. Individuals and organizations benefit from our impactful, goal-oriented, and comprehensive learning experience.

Our operations provide a sizeable income to the university community in various forms, such as dividends, lecture fees, and rents. In 2022, our financial contribution to the Aalto community amounted to approximately € 4.1 million.

AMONG THE
BEST IN
THE WORLD

Among the top 50 executive education providers worldwide
(Financial Times Executive Education Ranking)



Three most respected university accreditations, granted to only 1% of the world's business schools

Our ranking assures our customers of the world-class quality of our program content, learning methods, and faculty.



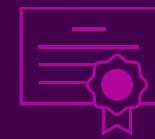
Around 7,000 participants in our programs each year



Operating globally, two strongholds: Helsinki and Singapore



Extensive, global partnership network of schools and universities



Over 300 different programs run in 2022

Current Corporate Partners

Premium Partners:



Deloitte.



HILTI



KONECRANES®



OP



CEMS Partners:



NOKIA

Alumni of the Year

2008



Matti Honkala
Former CEO of Kesko,
1972

2009



Arto Hiltunen
Former CEO of SOK,
1976

2010



Mikko Kosonen
Former President
of Sitra, 1978

2011



Sirkka Hämäläinen
Former Head of Bank
of Finland, 1958

2012



Timo Löyttyniemi
Vice Chair,
Single Resolution Board,
1982

2014



Riku Asikainen
Angel investor,
1990

2016



Salla Vainio
CEO of Marketing
Clinic,
1988

2018



Elina Björklund
CEO, Reima,
1989

2020



Pekka Ala-Pietilä
COB, Sanoma &
Huhtamäki,
1978

2022

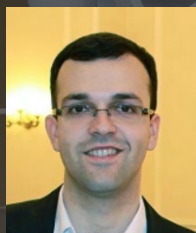


Kristo Ovaska
Founder, Smartly.io

Alumni Advisory Board



Pekka Ala-Pietilä
COB, Sanoma & Huhtamäki,
Chair of the Alumni
Advisory Board, 1978



Norbert Juhász
Senior Manager,
KAM Analytics and
Controlling, KONE,
2010



Alexei Koveshnikov
Associate Professor,
Management and
Organization,
2003



Elisa Liekkilä
Customer Manager,
TietoEVRY,
Mikkeli BScBA, 2008



Riitta Lumme-Tuomala
Head of Growth,
Aalto University
Executive Education,
1979



Sampo Päällysaho
SVP Groceries,
SOK, 1992



Pekka Rantala
CEO, ePassi
Payments,
1986



Jie Ren
Engagement Manager,
Global Compliance &
Transformation Services,
KPMG, 2012



Mia Sirkiä
Private Equity Investor,
Managing Partner,
Saari Partners, 1994



Vesa Sironen
Interim, CEO,
Gapps, 2002



Terttu Sopanen
Senior Consultant,
Brunnen
Communications,
1990



Kaisa Vikkula
Chairman of the Board,
Finnish Gymnastics
Federation, 1980

2021–2024

Key Strategic Initiatives

- Educational renewal with life-wide learning
- Cutting-edge research
- Community wellbeing
- Sustainability



Campuses

Otaniemi

BSc, MSc, PhD programmes

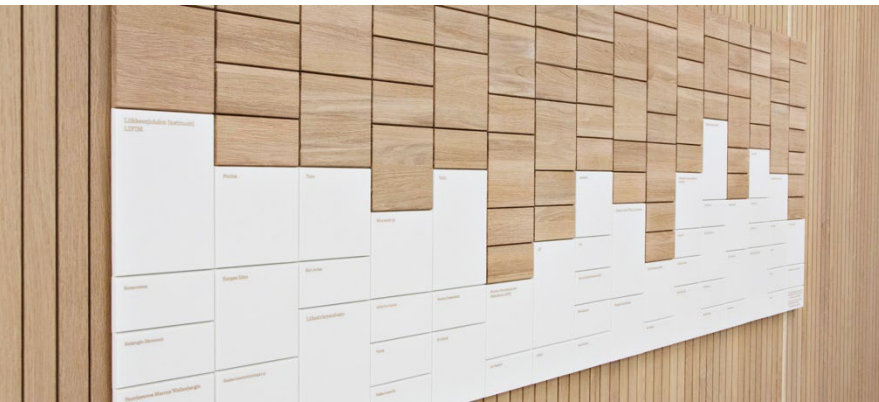
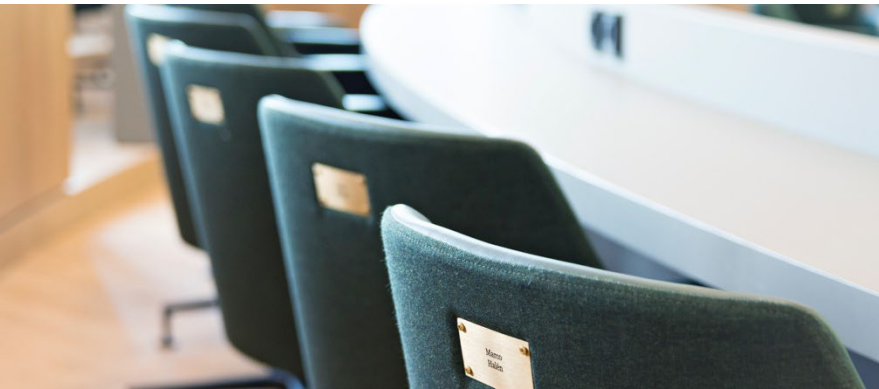
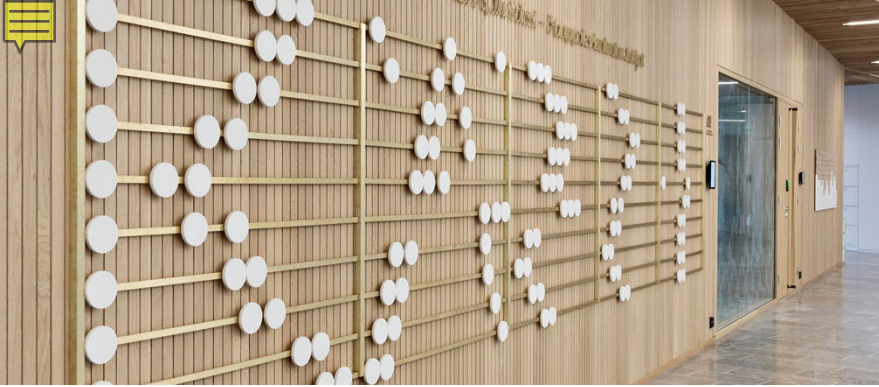
Mikkeli

BSc programme in
International Business

Aalto University Töölö (Helsinki)

Aalto University Executive Education and
Professional Development





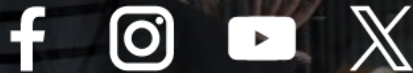
Fundraising

Building a Sustainable Resource Base

1. Field of Business and Economics
2. International student exchanges
3. New top-notch professors
4. Ownership

aalto.fi/en/school-of-business/business-and-economics-building-the-future

Better Business – Better Society



@aaltobiz

biz.aalto.fi