



My Feral House

Minchen Haga Stenersen

Learning Diary

2023 - period 2

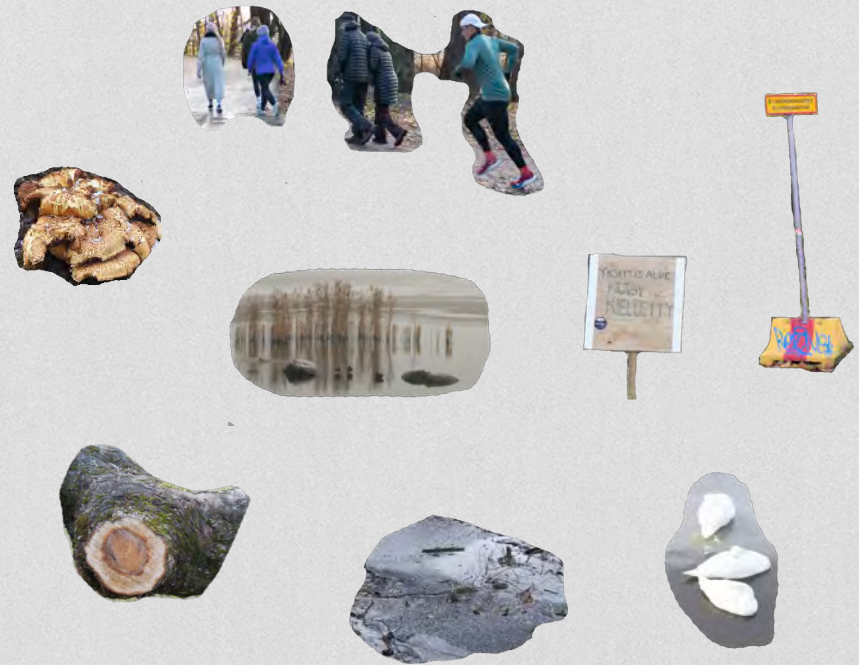
MUO-E5043 - Experimental Design

A feral house on top of a hill

My feral house lies on top of a hill in Töölöviken. It is nestled among other villas that were constructed around the same time. They all carry historical significance and share a similar architectural style. Some of them have been transformed into welcoming cafes, open for the public to enjoy. However, my house sets itself apart. Concealed behind large trees, with certain parts of the structure already showing signs of decay and deformation, it brought me to a realization that it is transitioning into a state of feralness.

This mysterious appearance and current condition is perhaps why I laid my eyes on it in the first place, and the reason why I wanted to use this as my feral place. What happens now as the owner of the house has passed away? Will it serve as something similar to the surrounding villas, mainly functioning as a human space, or could the feralness of it keep developing and transform it into a more than human home?





As an early exercise to get to know my MtH place, I mapped out all the interesting elements I could find on my walks in the area. The human and more-than-human activities - its contrasts and similarities. I reflected around the past and present of the area to better understand the changes that have been happening here for years and what "threats" and possibilities could be influencing factors for the future of the place.

A personal affair

As I am spending more time exploring the house, I find myself increasingly fascinated by its mysteries. It's almost like making friends with someone interesting, taking my time to discover new things. I can't help but think about all the stories and lives hidden in the house's energy—the way it smells, the sounds it makes, and the different objects that have been brought in at different stages of its life. Behind every wall is something waiting to be uncovered. Despite being so close, I still feel a sense of distance, and I worry about coming across as an intruder.



Sunday 20th.nov

"After building up the courage, Saga and I finally decided to approach the house. So, there we were, walking up to one of the entrances. It looked closed up, and despite knocking on several different doors, it seemed like maybe we weren't welcome. It was a bit disappointing because, for the first time, I stepped out of my comfort zone, and things didn't turn out as expected. But then again, it was okay because the mystery of what might be inside still lingered, adding to my imagination. I couldn't help but wonder if others passing by felt the same curiosity. Do they also create stories in their heads about what's going on inside?"

Something else caught my attention as we got closer to the house—there were a lot of sensors and cameras all around. It seemed like someone wanted to keep the place safe from intruders. I wondered if they were mainly thinking about people or maybe even MtH creatures.

The house is so big, with different parts showing different stages of time. Some parts looked well-kept, while others were slowly falling apart. Some windows were even covered with wooden planks. It's fascinating how a house can be both inviting and unwelcoming at the same time."

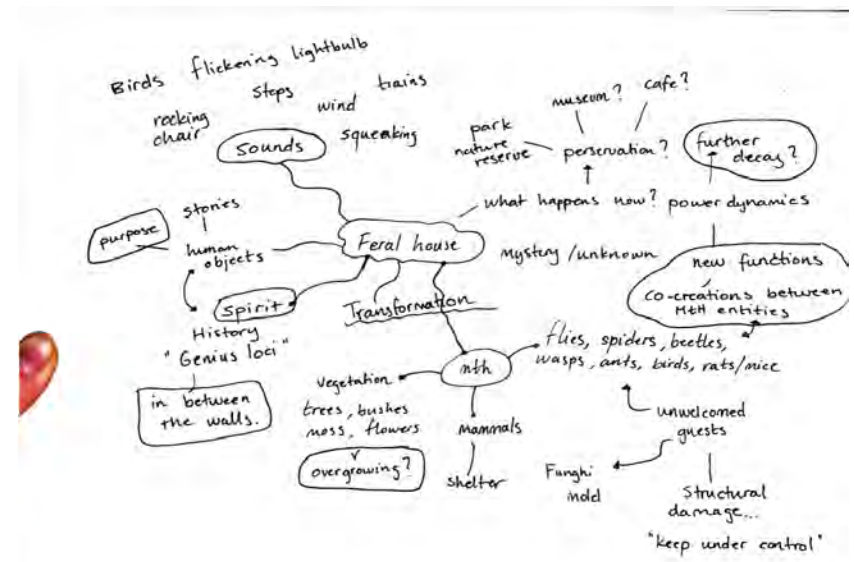


Saturday 11.nov

As evening falls, everything takes on a mysterious air. It's only 5 p.m., but it feels as dark as night. The path is lit, but the surroundings are hazy. Approaching the house, it stands out through the vegetation, lit up from the ground, giving it a haunting vibe. Candles line the path to the entrance, and some windows are decorated for Christmas, a heart-shaped ornament catching my eye.

Findings from my walk:
The house seems inviting, as if calling me in, yet I can't bring myself to step onto the property. There's a strong sense of curiosity, tempting me to explore the 28 rooms within its walls. But fear holds me back. The unknown draws me in, yet it also keeps me from knocking on the door.

Notes from a few walks...



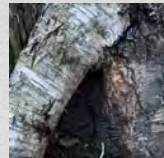
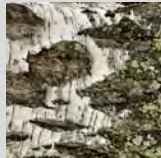
A more than human home

The outer part of the house is visible to anyone passing by. Those interested can observe the structural changes happening here over time. It's interesting to consider not only the wild changes that might occur between the house and the surrounding plants but also the potential relationships among different species inside the house if it were an open space. Typically, in our human homes, we control what enters and exits. If ants, spiders, or other insects attempt to settle, we can easily keep them away with human-made tools. From our human viewpoint, this is understandable, as we want our spaces to work well for our own needs.

In the absence of humans over an extended period of time, the ecosystem surrounding the property might undergo significant changes and potentially create advantages for the MTH creatures in the area. Could there be some benefits for the multi-species to take control over the inside structure of a house like this? I don't know the answers, but thinking about this has made me question what belongs to people and what belongs to other living things. *When do we decide what's purely ours to utilize?*

Human / More than human structures

During my walks, I pay attention to the interplay between human-made structures and those crafted by more-than-human entities. Structures intended for human needs often display a certain level of order, whether reflected in their visual appearance or the intended functions they serve. In nature, however, structures appear more woven into their environment – lacking clear order. Trees are allowed to crack and transform organically with other Mth creatures involved – ever changing and growing.

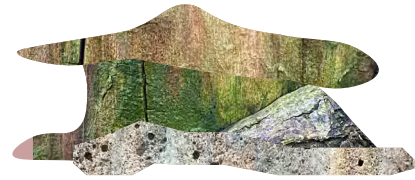
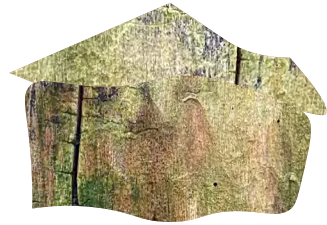


In my exploration, the feral house becomes a tangible representation of these natural processes. With its gradual decay, the structure becomes an active participant in the ecosystem surrounding it. If we left the house standing by itself – what would then happen to it over time? Will this state of decay, that may seem negative in the human perspective, allow the house to adapt and align with the state of change in the surrounding Mth environment?

Collecting feral Data

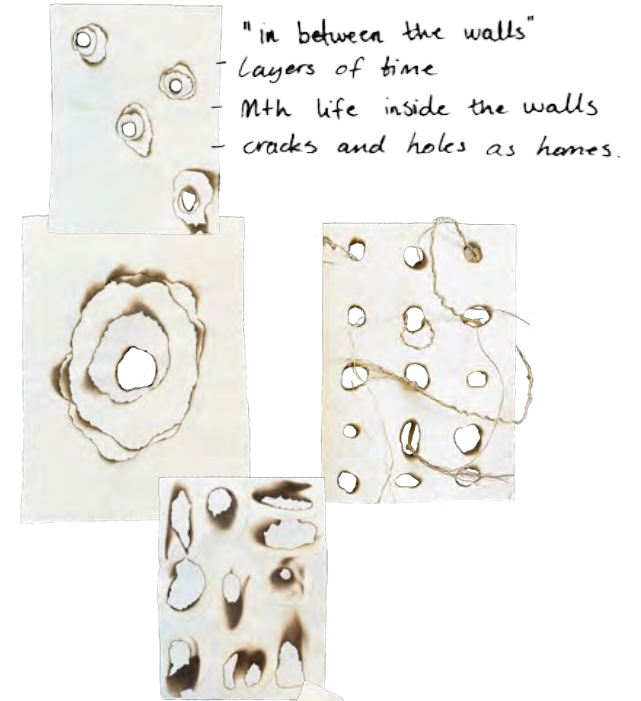
I started gathering my feral data through observing and analyzing the Mth structures around the property. Finding the differences and similarities between these was my main focus. The data was mainly collected by taking pictures, collecting on-site materials, and doing creative exercises engaged with the environment.





Visual timeline of structural changes

As a part of the development of my artifacts, I did some exercises with different mediums like digital illustrations, crafting with paper and sketching. This allowed me to open up creatively and test out several ideations.



"in between the walls"
- Layers of time
- Mth life inside the walls
- cracks and holes as homes.

Sculptural models
human vs mth structures
Abstract - symbolic.



"tactility walk"
- Drawing w. mth structures



Development of my artifacts

My intention with the final artifacts was to visualise a speculative future of the feral house and its change in structure as it becomes one with the natural surroundings. The actual making of the artifacts was very much a learning-by-doing experience, where rather than having a specific result in mind, I focused on the process of connecting with the materials found. I used organic material (logs, moss and twigs) that I had found laying around the property as a starting point to develop these models.



Wood

Time

History

life death process

Transformation

Temporality

Structure - Artifact

Home

shelter fragility

senses > smell, touch
sound



FINAL ARTIFACTS





Screenshots from my video artifact

The video works as an extension of my artifacts. It highlights the main topic I have been re-searching, - the changes of this house as it becomes more feral over time. The illustrations and models are shown in a stop-motion sequence to put emphasis on this feral growth.

MUO-E3043 - Experimental Design
Minchen Haga Stenersen
2023 - period 2

THANK YOU..

This course has helped me discover the significance of understanding and co-creating with more-than-human entities. In a way this process has reshaped my design thinking and challenged my perspectives. Pushing myself to go beyond my human-centric mind and embracing an openness to experiment with the feral as a method to connect more intimately with my surroundings. There's still lots to learn, and I'm excited to take these new ways of thinking with me on my journey.