



Introductory Presentation



Aalto WiT
Programme

Professional Diploma

'Amidst the large scale of severe changes the world is facing we need to have understanding and capabilities in handling the wicked problems. The WiT Programme is a strong take on helping people to help themselves.'

- Saija Hollmén, Professor of Practice in Humanitarian Architecture at Aalto University



The new [Aalto WiT Programme](#) aims to bridge capacities to advance resilience of the most vulnerable communities.

Introduction

Aalto WiT Programme is a transdisciplinary professional diploma programme under the Aalto University World in Transition Research LAB (WiTLAB).

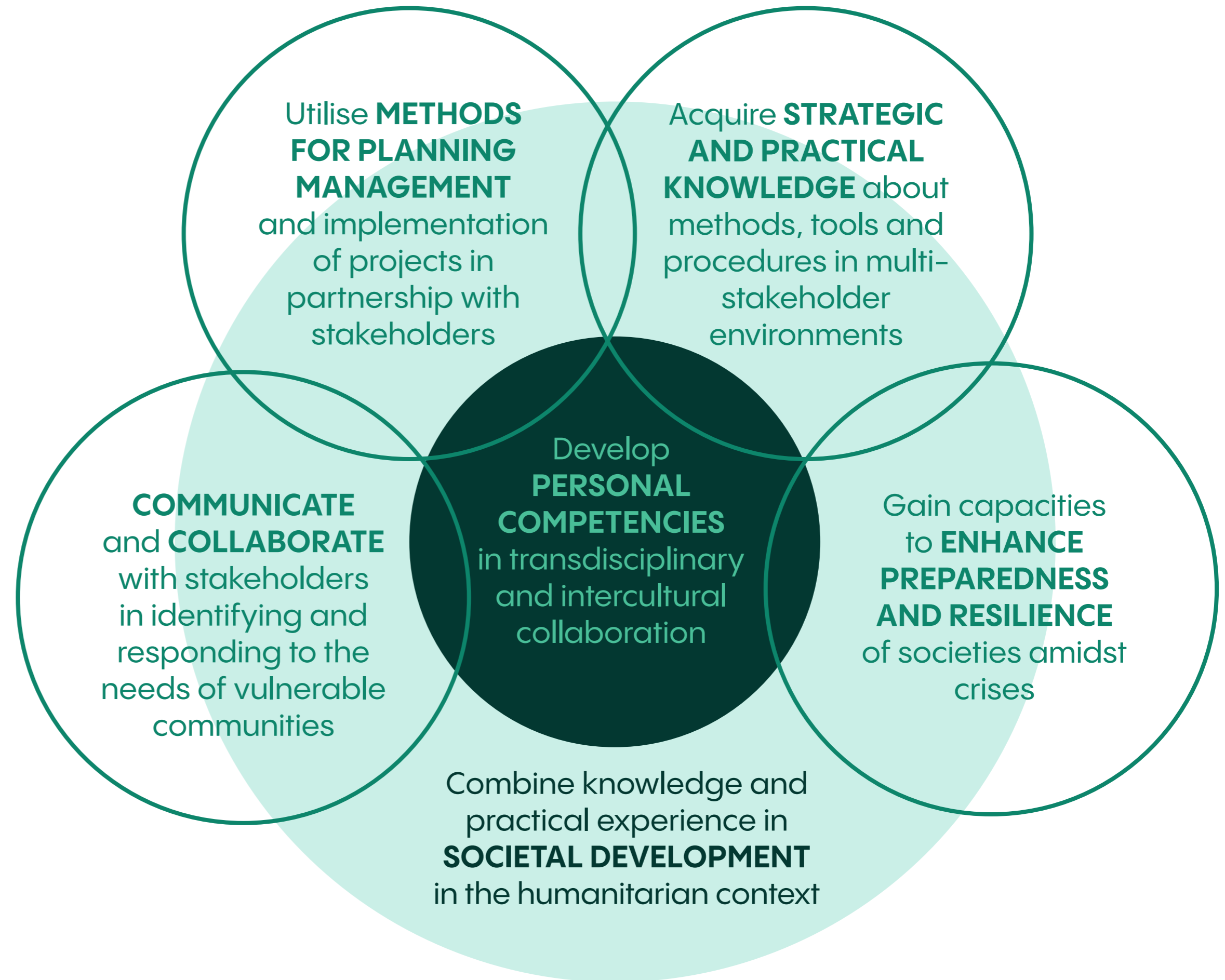
The programme focuses on the resilience of human settlements in low- and middle-income countries.

- In partnership with organisations, the programme combines scientific methodologies with work-life experiences in the field through real-life cases
- The programme is intended for professionals and academics in the fields of architecture, landscape architecture, design, engineering, business, and social sciences



Why to join the WiT Programme?

Through learning from experts you will be able to:



Programme in a nutshell

Moving towards decolonised practices with engaged partners, based on mutual knowledge creation and sharing, while aiming at societal impact.

- Under the umbrella of Humanitarian Architecture, the programme considers the thematic areas of:

**Sustainable Built Environment
Cultural Heritage and Development
Humanitarian Responses**

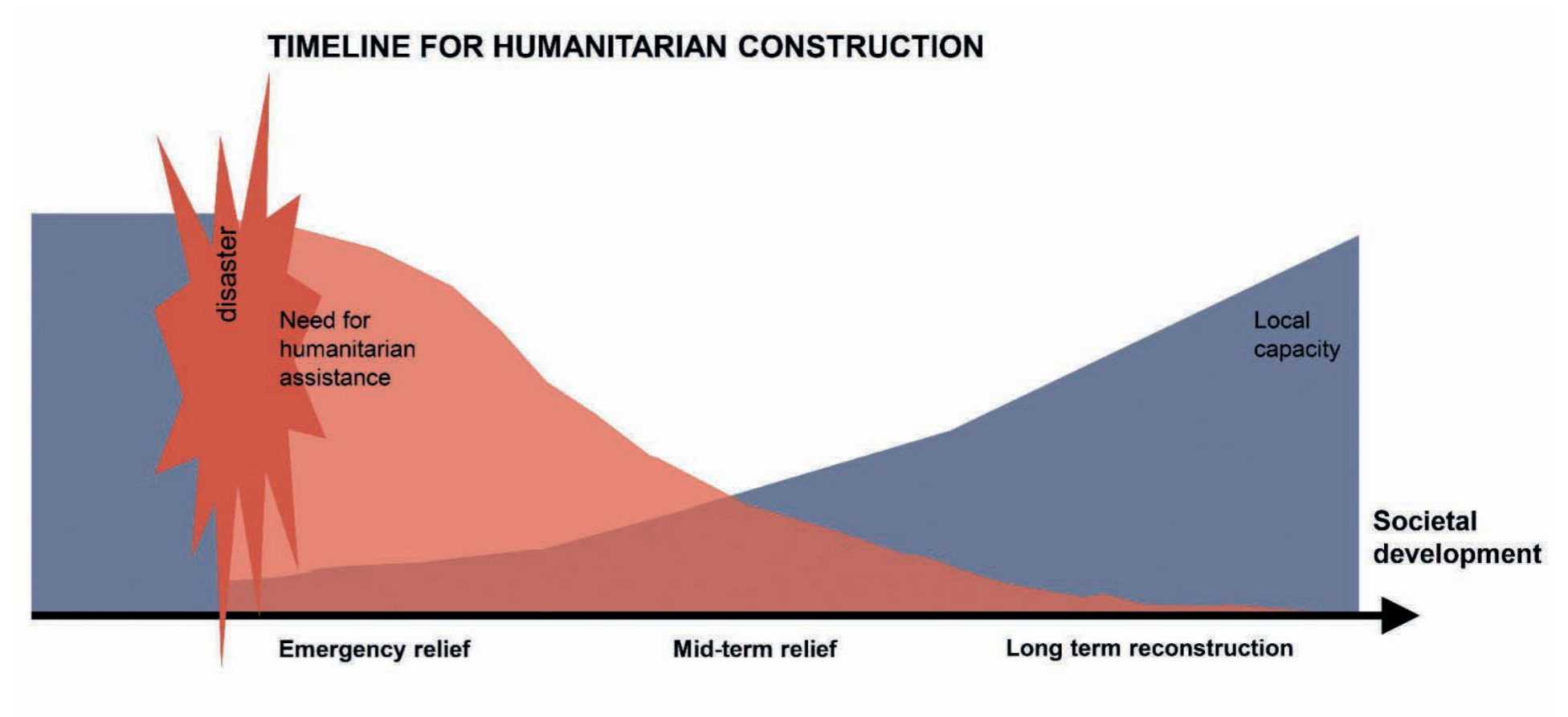
- The programme offers life-wide learning through real life case studies in the field
- The study credits are officially registered and transferable, providing a 30 credits diploma
- The programme starts in January 2024
- The application period is 15th of August - 30th of September 2023



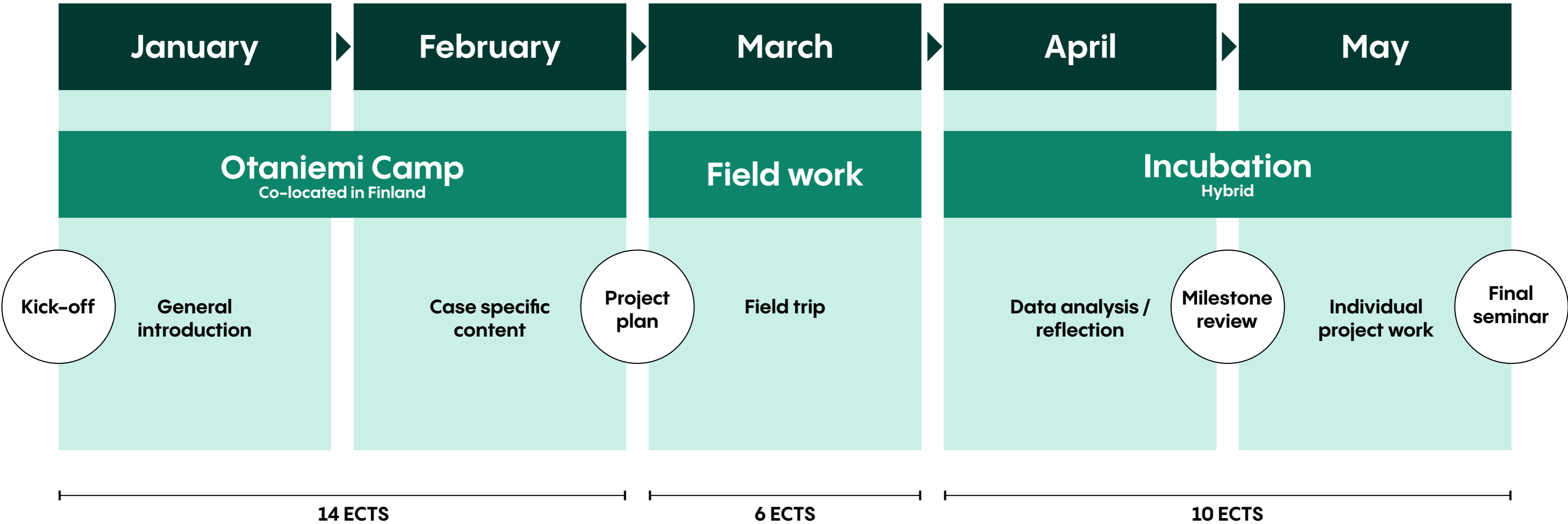
Humanitarian architecture – what does it mean?

As a general theme of the programme, humanitarian architecture aims at the betterment of living conditions of vulnerable communities.

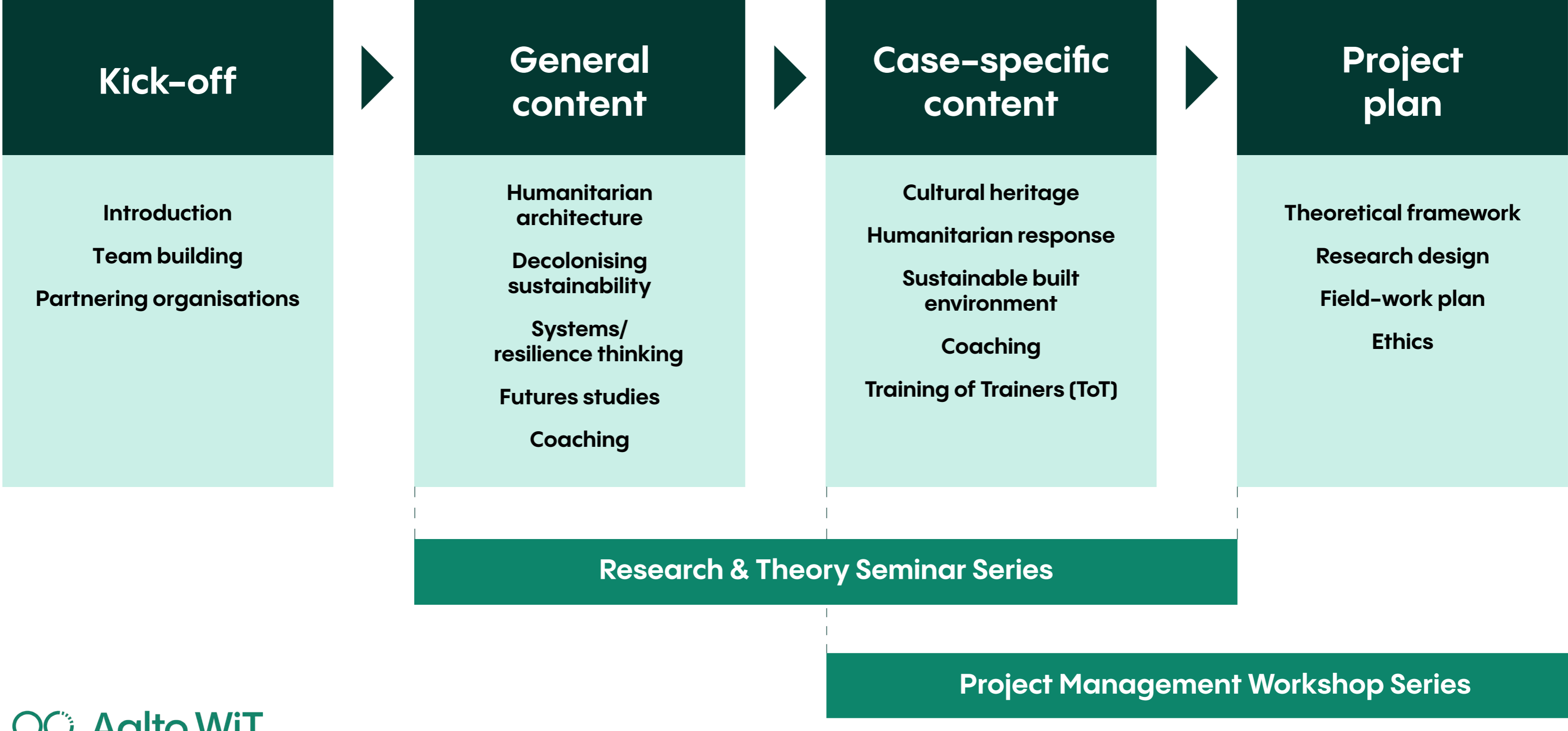
- It engages with the primary needs of humans in precarious situations, concentrating on processes rather than products
- It considers emergency relief, transitional shelters and reconstruction in disaster or conflict zones
- Humanitarian architecture can equally be understood as long term recovery and poverty alleviation, participatory planning and as community engagement in vulnerable communities
- It can also refer to culturally appropriate and locally adapted architectural design solutions in low resource settings



WiT Programme timeline



Otaniemi Camp in details



About us



Saija Hollmén
Academic Lead

Professor of Practice in Humanitarian Architecture
Architect, D.Sc. (Arch)



Anahita Rashidfarokhi
Programme Coordinator

Postdoc Researcher
D.Sc. (Tech)



Hani Tarabichi
Strategy Lead

Doctoral Researcher
MA (Econ)



Katri-Liisa Pulkkinen
Faculty member

Architect, M.Sc. (Arch)
Doctoral candidate



Matleena Muhonen
Faculty member

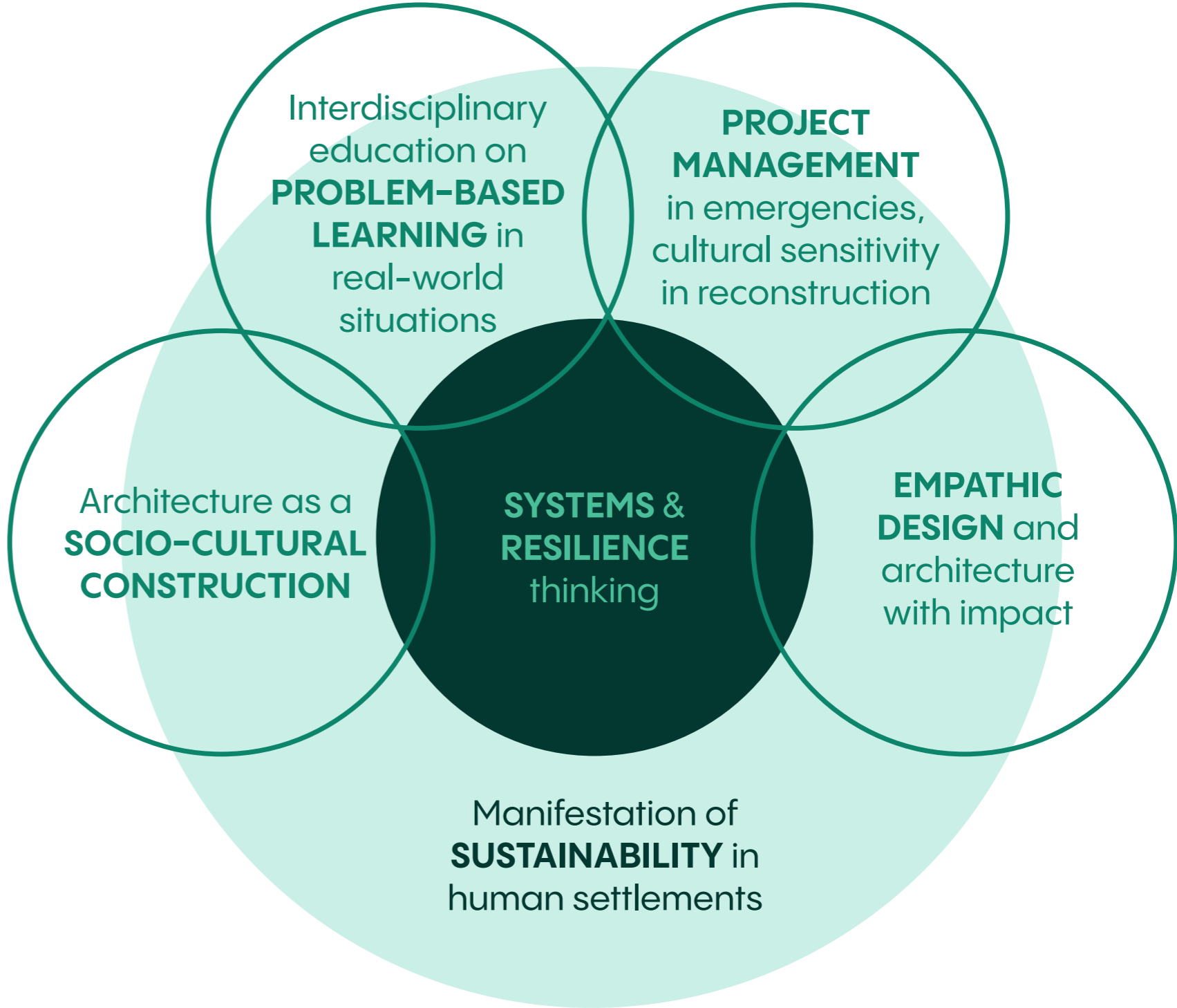
Landscape Architect,
M.Sc. (Landscape Arch)
Lecturer



Kristjana Adalgeirsdóttir
Faculty member

Architect, M.Sc. (Arch)
Doctoral candidate
Shelter Delegate

Our expertise



Our partners

All our partners will provide unique study cases out in the field, supporting the students with life-wide learning experiences



The UN-Habitat promotes socially and environmentally sustainable towns and cities, working as the hub for all urbanisation and human settlement matters within the UN.



The UN Refugee Agency is a global organization dedicated to saving lives, protecting rights and building a better future for people forced to flee their homes because of conflict.



Finnish Church Aid is Finland's largest international aid organisation, who believes in everyone's right to peace, quality education and sustainable livelihoods.



The Stone Town Conservation and Development Authority (STCDA) of Zanzibar is a Governmental institution responsible for controlling and managing conservation activities in the Stone Town World Heritage Site (WHS).



As a part of the global RLabs movement, RLabs Tanzania tackles poverty and challenges the development sector to empower people to transform their own lives.



The Building and Road Research Institute (BRRI) in Ghana aims to encourage demand-driven and problem-based research, by offering training and technology transfer.



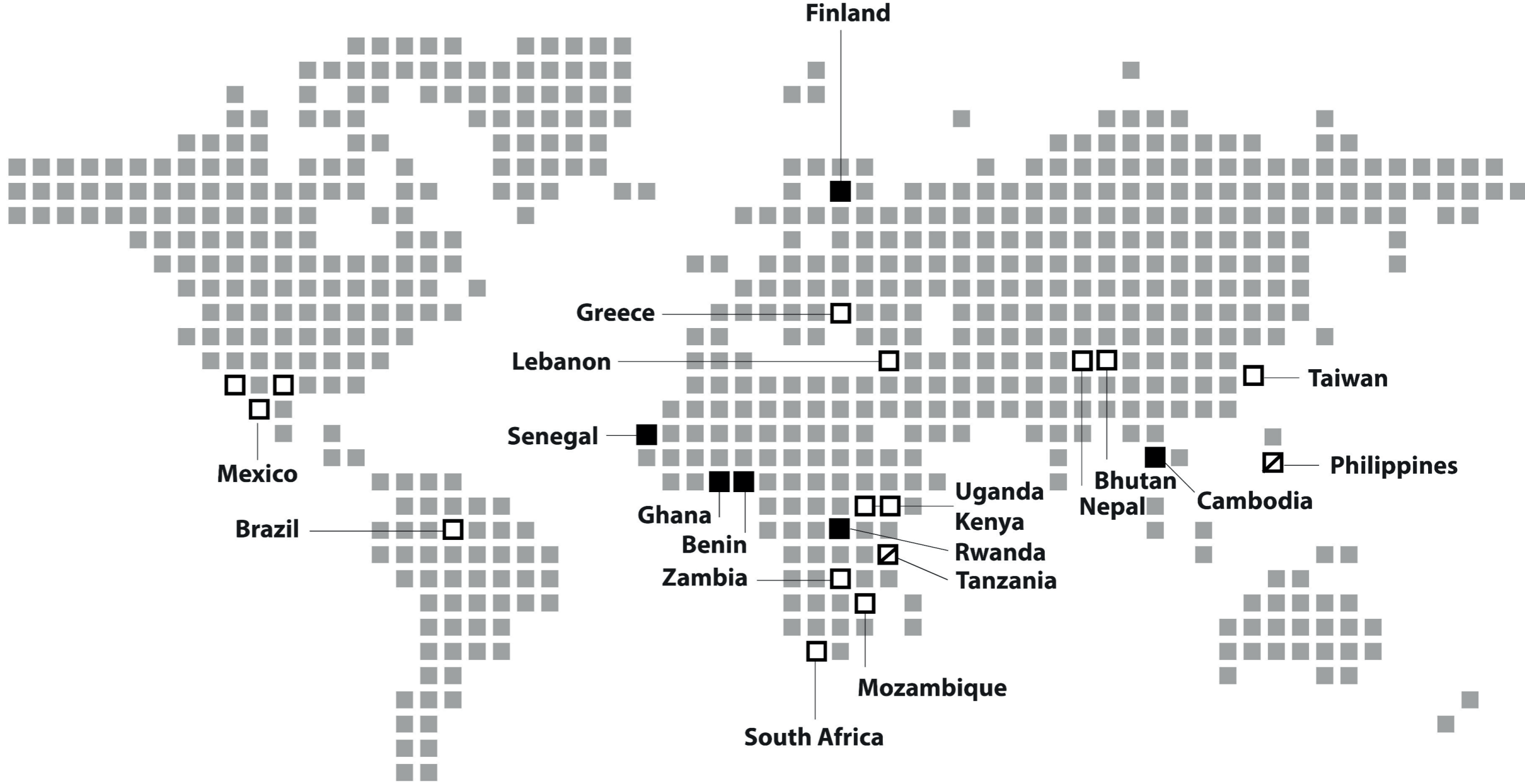
The Kwame Nkrumah University of Science and Technology in Ghana advances knowledge by research, quality teaching and community engagement to improve lives.



The University of Rwanda supports development by discovering and advancing knowledge, committing to the highest standards of academic excellence.

Previous real-life projects under Aalto WiTLAB

Aalto WiT Programme is built upon 30 years of experience with real-life projects in different parts of the world.



WiT minor alumni



Emma Hannula

CEO & lead consultant at
Finnigroup Consultants and Architects

“Development work challenges an architect to think outside the box and provides a wider perspective. It can be rewarding to offer one’s professional skills to support the sustainable development of emerging economies.”



Lassi Tähtinen

Doctoral candidate, Department of
Built Environment, Aalto University

“The real-life cases provide an opportunity to realise how the practical context can affect the theoretical understanding and abstractions of sustainability issues.”



Eve Zorawska

UNHCR Shelter &
Settlements officer

“My biggest take away from real-life project courses has been the introduction to socially inclusive approaches and methods. The course provided us tools on how to better identify marginalized groups among a population and how to create safe spaces for them to participate in a design or decision-making process.”



Niina Rinne

Programme Management
Officer at UN-Habitat

“During my studies, I never thought that the UN could be a career option for architects as our training back then was focused only on the traditional role of an architect in Finland. But I discovered there is a huge need for professional urban development specialists in the international humanitarian development field.”

Where can you work after graduating?

International organisations

Programme planning, coordination, monitoring and evaluation, advocacy

Non-governmental organisations

Project design and management, community capacity building, support to forced displacements

Public sector

Urban planning, resilience and disaster management planning

Private sector

Consulting, entrepreneurship

Academic institutions

Research, teaching, mentoring



Image | Tanzania 2016
Helena Sandman

Applying to the WiT Programme

Image | Anne Kinnunen



Application period

15th August – 30th September 2023

Duration

5 months (Jan–May) Period III–V

Prerequisites

Master's degree, or Bachelor's degree
+ 3 years of working experience

Credits

30 credits diploma

Language

English

Mode of study

On-site and hybrid

Tuition fees

9,200 € + 24 % VAT

Do you want to become a **positive catalyst** for addressing the future challenges?

Find out more

Websites

aalto.fi/en/wit-programme
aalto.fi/en/witlab

Social media

[instagram.com/aaltowitlab](https://www.instagram.com/aaltowitlab)
[linkedin.com/company/aalto-witlab](https://www.linkedin.com/company/aalto-witlab)
[facebook.com/AaltoWiTLAB](https://www.facebook.com/AaltoWiTLAB)

Contact

Anahita Rashidfarokhi
Programme Coordinator
anahita.rashidfarokhi@aalto.fi



Aalto WiT
Programme

Aalto
WiT
LAB



Image | Rwanda – Saija Hollmén 2016