

Outi Hirvi

—

**IT Customer Relationship Manager
(IT Services)**

IT Services for Students

aalto.fi/it-for-students

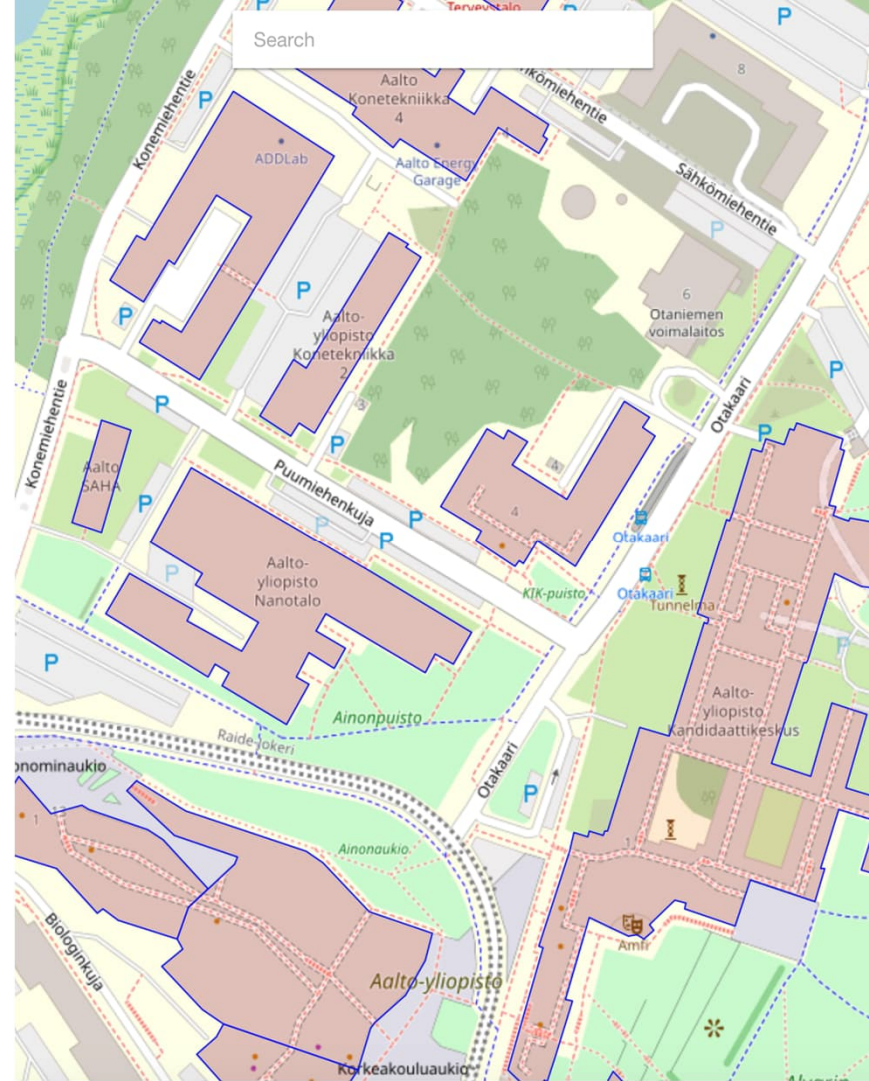
A”

Aalto-yliopisto
Aalto-universitetet
Aalto University



How to navigate at campus?

- › [Aalto Space](#) mobile application for booking conference and group work facilities and help in navigating the campus
- › Get to know the campus through the [Virtual Tour](#)
- › [Computer availability](#) per classroom is visible in booking.aalto.fi



How to stay safe and secure?

› Student's information security and data protection training covers things that every student should know about information security and data protection

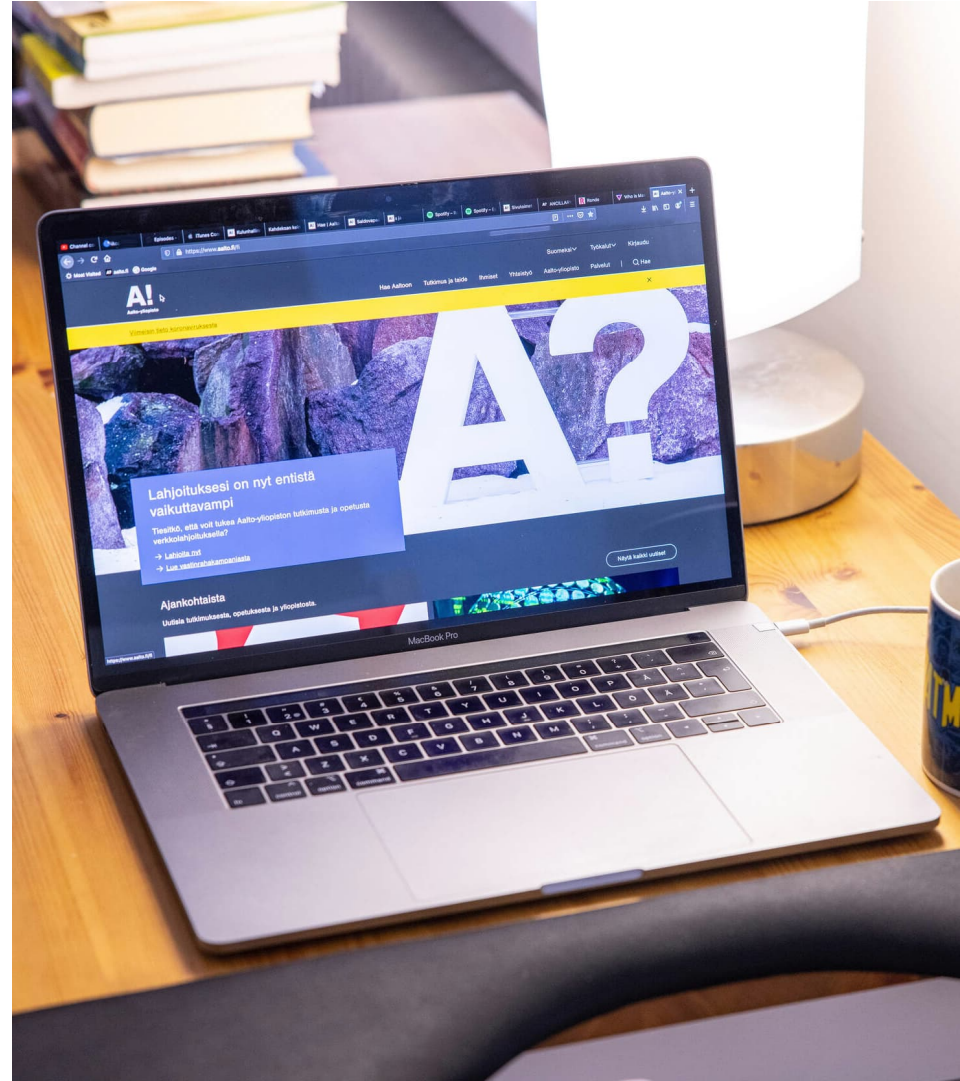
› Multifactor Authentication (MFA) adds an additional layer of security to your user account



How to connect to Aalto network?

› [AnyConnect VPN](#) links your laptop or mobile phone to Aalto Network/storage drive

› [VDI \(vdi.aalto.fi\)](#) enables you to virtually use Aalto Windows / Ubuntu desktop on any laptop or mobile phone



How to print?

- › Register a personal printing card – you can use a HSL card, Frank/Lyyra or a separate printing card from Unigrafia
- › Log in at a [PrintingPoint](#) with your Aalto ID
- › Printing quotas: 200 B&W pages per quarter of a year, check color printing from your school/teacher



Who to contact?

Service desk

- › First point of contact for all issues
- › Options for contacting Service Desk
 - › Create a service request at servicedesk.aalto.fi
 - › Visit the Service Desk during service hours at Kandi or Väre
 - › Ask for assistance through chat
 - › Call +358 50 513 2000 during phone service hours

