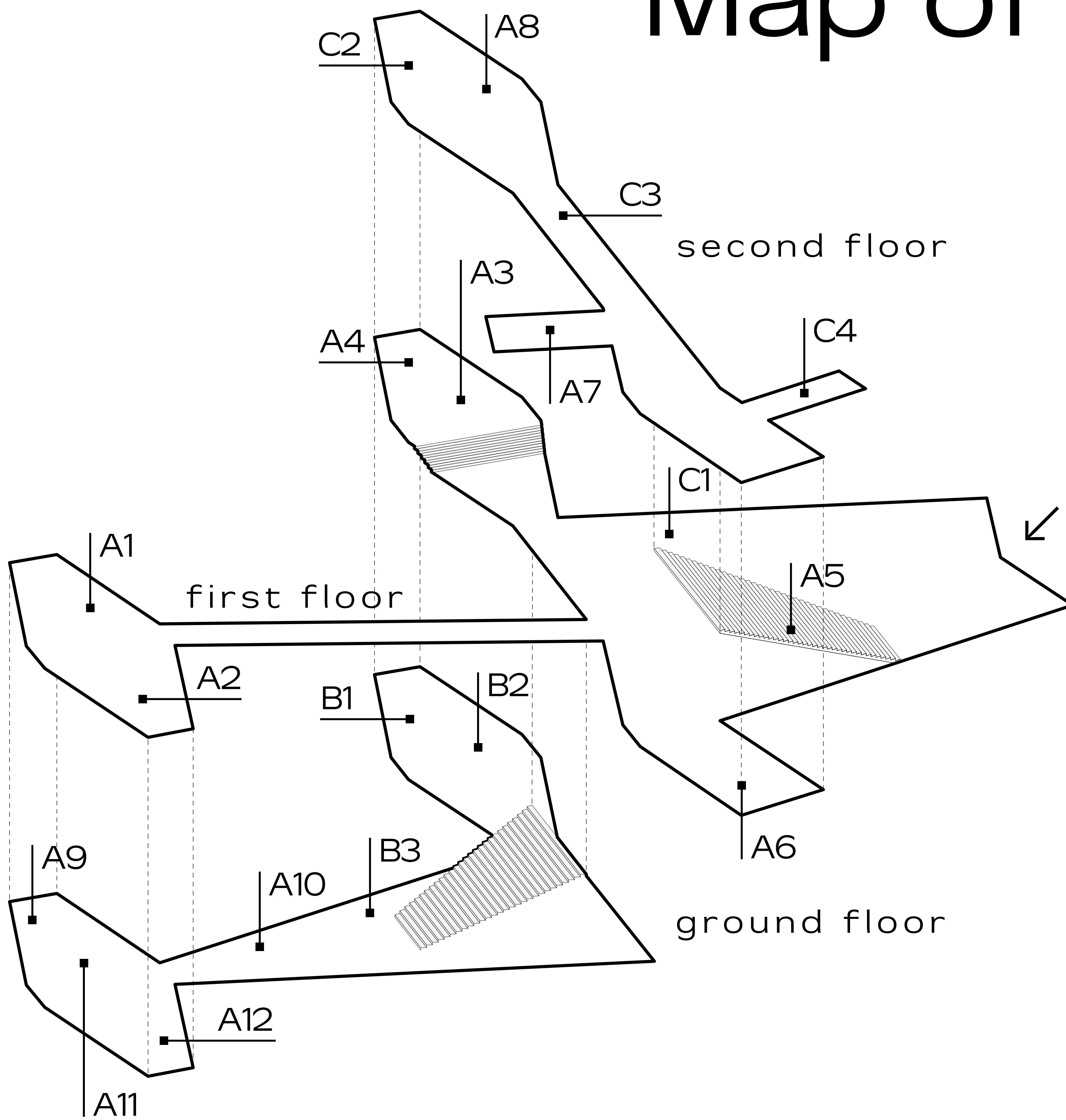


Map of exhibitions

Väre, Otaniementie 14, Espoo



VÄRE ENTRANCE
30m to metro station, exit to Otaniementie

A	MATERIALS What's the future made of?
B	FOOD What's on the menu?
C	FASHION Wear the future!

FIRST FLOOR

- C1 | The wardrobe of the future: Fashion for systemic change
- A1 | Facilitating the future of sustainable textiles and packaging: Aalto University Bioinnovation Center
- A2 | Second Nature by CHEMARTS: New bio-based material experiments from students
- A3 | NONTOX: Improving the circularity of plastics
- A4 | Revaluing Wood: Another look at wood and the forest
- A5 | Building blocks of a better future: Rethinking building materials
- A6 | Towards carbon negative acoustic environments in buildings

SECOND FLOOR

- C2 | Fluff Stuff: Textile fillings from rewetted peatlands
- C3 | Better balance in the fashion system: Outfits from fashion students and bio colour researchers

- C4 | New textile applications from underutilized plant-based side streams
- A7 | Pollinator's delight: A participatory art piece from textile waste promoting biodiversity
- A8 | CreaTures: Creative Practices for Transformational Futures

GROUND FLOOR

- B1 | Retail 1.5: How can retail facilitate 1.5-degree food?
- B2 | Urban foodscapes: How your environments shape your eating and its sustainability
- B3 | The Next water packaging: Packaging concepts from students
- A9 | From Dreams to Action! Stories from Sustainable Global Technologies, student cases.

- A10 | Designing experimental futures for 1.5-Degree lifestyles: How design students contribute to achieving sustainable lifestyles

- A11 | Interplay of Cultures Studio 2022 Sámi: Architecture that leaves no trace in the environment
- A12 | Sustainability through entrepreneurship: Prototypes of students' sustainability solutions

SATELLITE EXHIBITIONS

Alusta pavilion: More than human architecture, an outdoor exhibition at the courtyard of the Museum of Finnish Architecture, Kasarmikatu 24, 00130 Helsinki. 1.6.2022-1.10.2023

The trees of Pikku-Finlandia: hand-made graphic prints at Pikku Finlandia Café, Karamziniranta 4, 00100 Helsinki. 1-30.9.2022.

CO-CARBON: Smart urban green infrastructure. Visit the outdoor measurement site at the Aalto University campus, Ossinlampi, Espoo.

Open at all times.