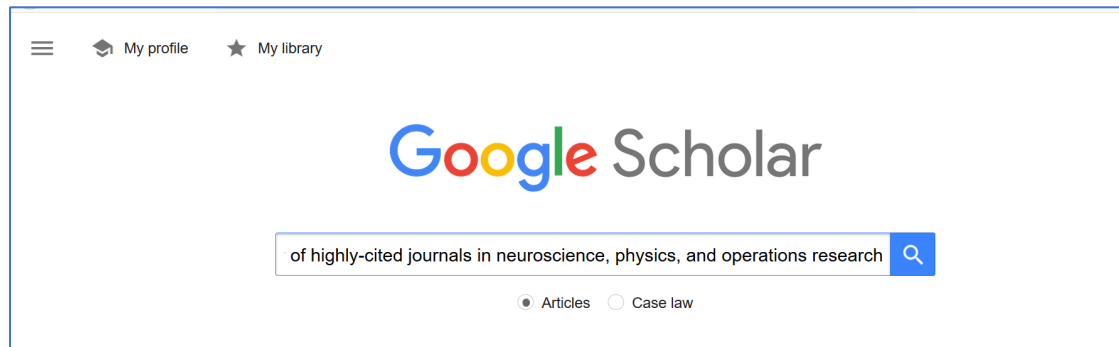
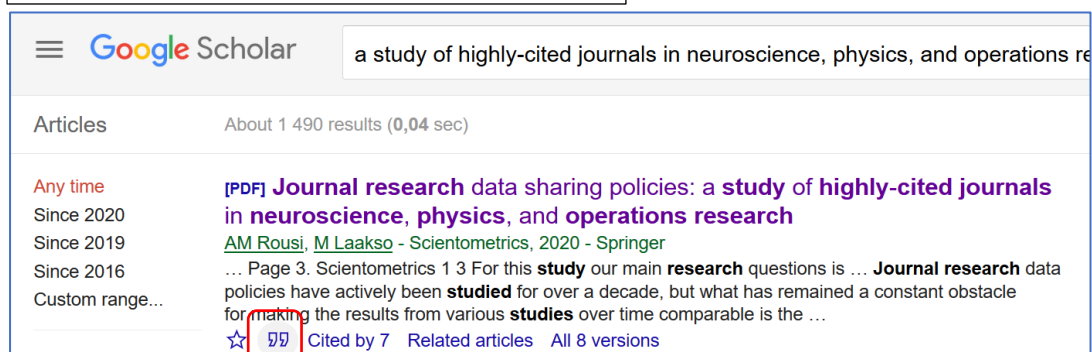


How to import record from Google Scholar to ACRIS

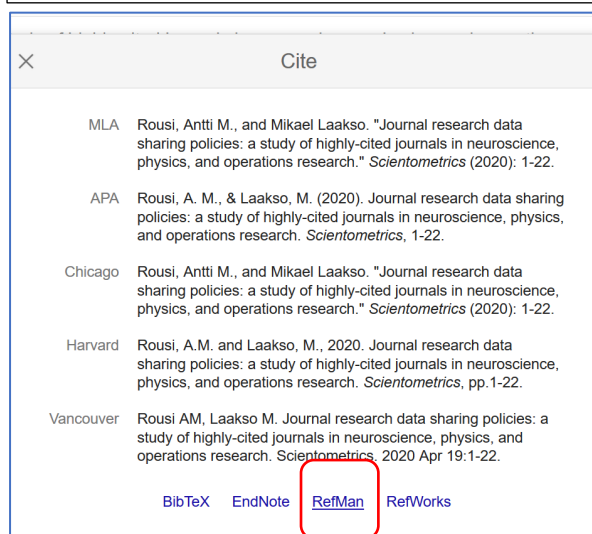
Step #1 search the missing publication from GS



Step #2 click the “-function below article data



Step #3 from open tab, choose “RefMan” and save it to, e.g., downloads folder



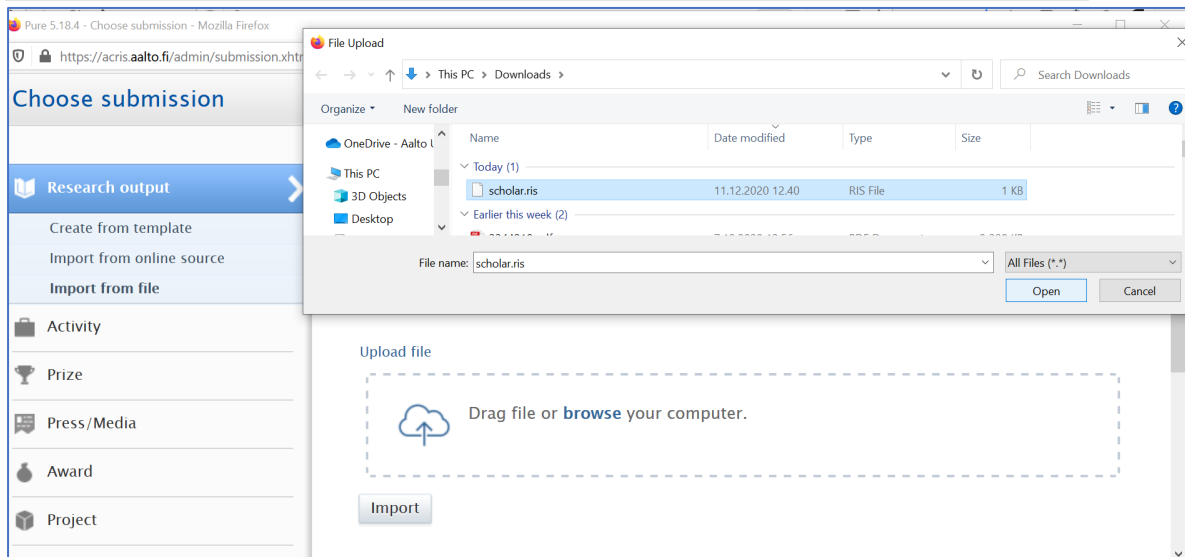
Step #4 go to acris.aalto.fi and choose 'Add content'

The screenshot shows the Pure ACRIS - Aalto Research Information system interface. The top navigation bar includes 'Pure', 'ACRIS - Aalto Research Information', a search bar, and user information for 'rousia1@aalto.fi'. Below the navigation bar, there are tabs for 'Editor', 'Master data', 'Reporting', 'Personal', 'Dashboard', 'Administrator', and 'Usage analytics'. The main content area is divided into several sections. On the left, there is a sidebar with 'Editorial overview' and 'Research outputs' (125011), 'Editables' (125486), and 'My research output' (20). The 'My research output' section is highlighted. The main content area shows a search bar for 'Search for research output...', a filter for 'My content', and a list of results. The first result is 'Musiikki-informaatiomoodien tilannerelevanssi muusikkojen ja musiikinopiskelijoiden tiedonhankinnassa' by Rousi, A., dated 28 Oct 2020. On the right, there is a large orange button labeled '+ Add content' and a 'Tasks' section showing '179 Research outputs are waiting to be pushed to next workflow step' and '4 Datasets are waiting to be'.

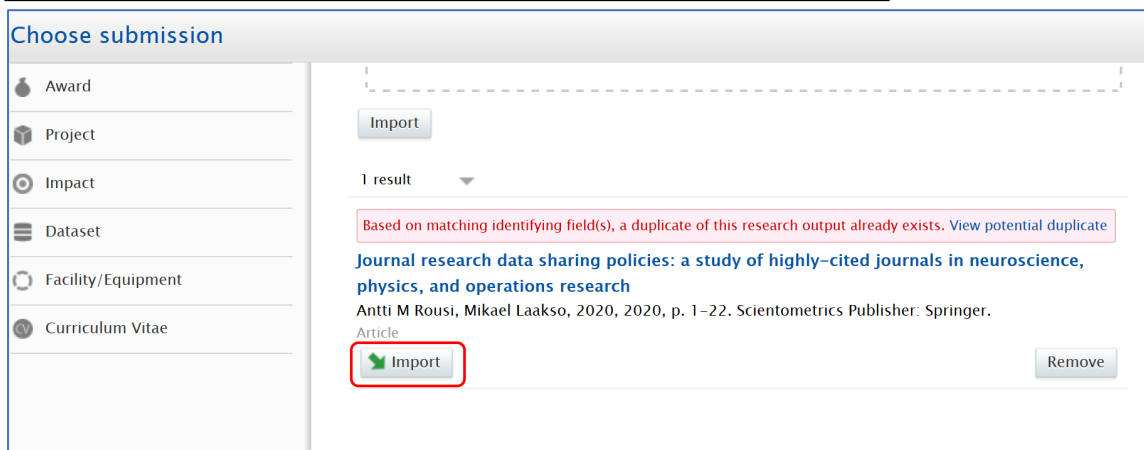
Step #5 from the opened tab, choose 1) "Research output", 2) "Import from file", and 3) "RIS"

The screenshot shows the 'Choose submission' dialog in the Pure ACRIS system. The dialog has a sidebar on the left with options: 'Submission guide', 'Research output' (selected), 'Create from template', 'Import from online source', 'Import from file', 'Activity', 'Prize', and 'Press/Media'. The main content area displays three submission options: 'BibTeX', 'RIS', and 'CERIF in Action'. The 'RIS' option is highlighted. The 'BibTeX' section describes it as a tool and file format for describing and processing lists of references. The 'RIS' section describes it as an interexchangeable, tagged format for expressing bibliographic citations. The 'CERIF in Action' section describes the project's aim to consolidate existing work using CERIF to explore the possibilities of data exchange by producing a...

Step #6 choose “browse your computer” and open scholar.ris file from Downloads folder



Step #7 scroll down a bit to see results of the upload. Press “Import”



Step #8 Press “Import and review”

Import from RIS

Journal research data sharing policies: a study of highly-cited journals in neuroscience, physics, and operations research
Antti M Rousi, Mikael Laakso, 2020, 2020, p. 1–22. Scientometrics Publisher: Springer.

Author match

Author in RIS	Author and affiliations in Pure
1 Rousi, Antti M	Antti Rousi Research and Innovation Services – Information Specialist Person Research and Innovation Services

Import and review **Cancel**

Step #9 send the metadata to be validated by the ACRIS team.

Journal research data sharing policies: a study of highly-cited journals in neuroscience, physics
Research output: Contribution to journal > Article > Scientific > peer-review

EDIT
Metadata
Metrics
Translation
OVERVIEW
Relations
NOTIFICATIONS
Display
For further inquiries, please contact acris@aalto.fi
HISTORY AND COMMENTS
Comment on workflow step change:

Type
Publication category *
☒ Scientific ☐ Professional ☐ General public
Peer-reviewed *
☒ Peer-reviewed ☐ Not peer-reviewed
Ministry of Education publication type
A Peer-reviewed scientific articles > A1 Journal article-refereed

Publication status
Publication statuses and dates *
Published
Add publication status and date...

Status: For validation **Save**