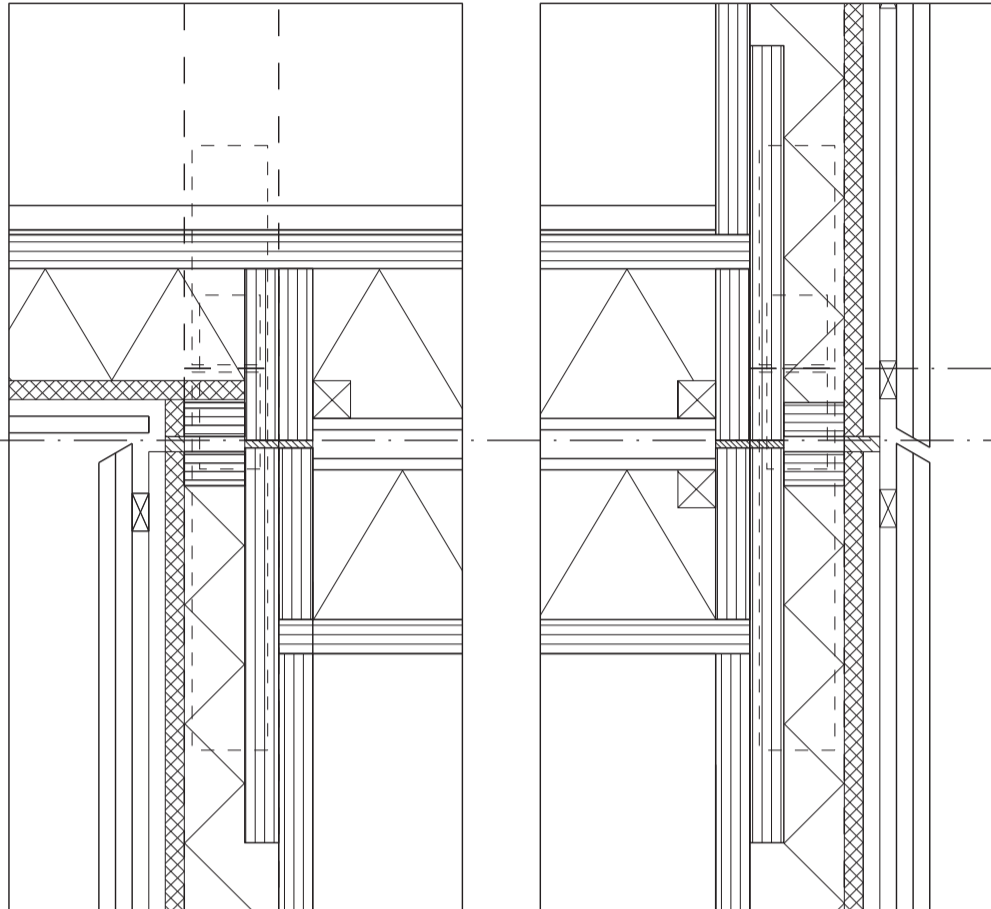


Roof

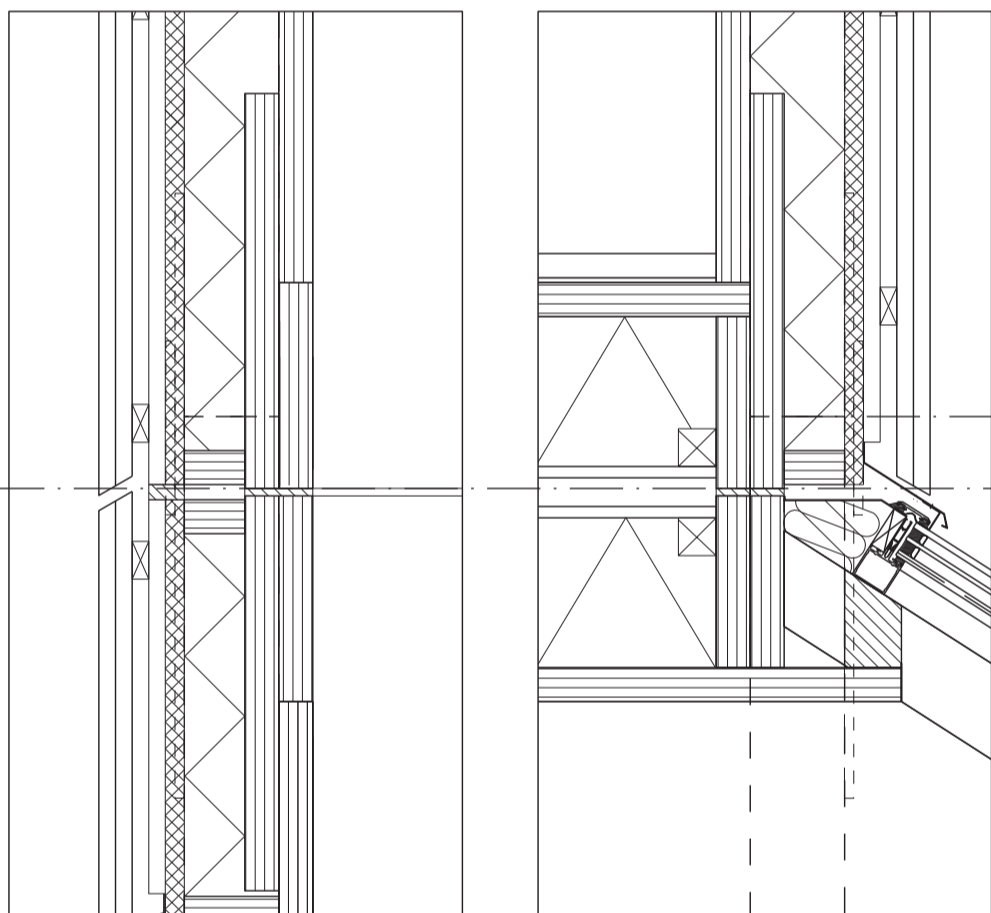
- Flashing
- Bitumen
- Plywood
- Air gap between substructure
- Windbarrier board
- Insulation between solid timber beams
- LVL roof panel



- Units load-bearing contact point
- Units airtight division line

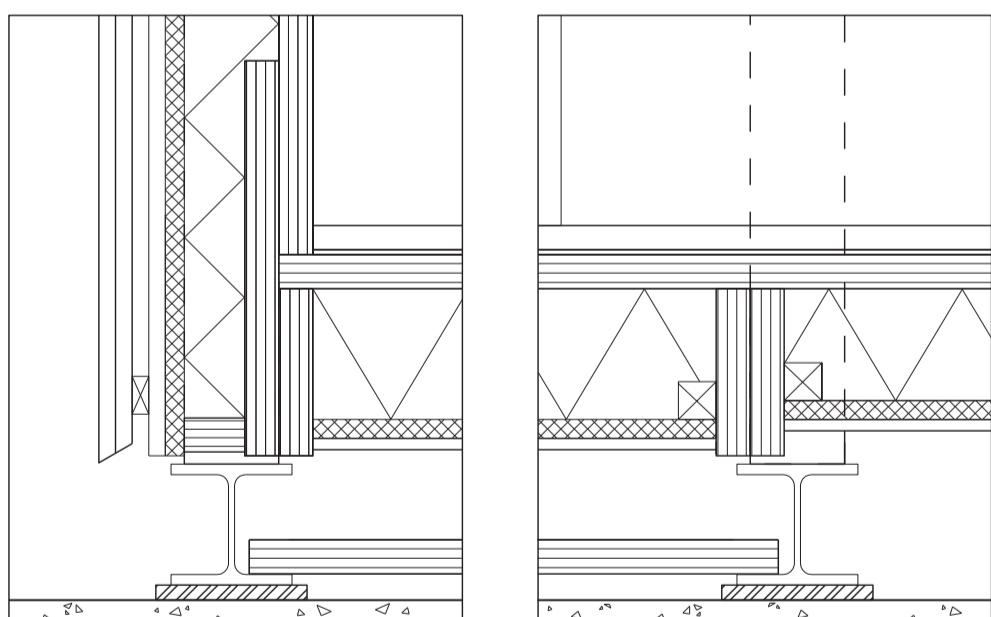
Typical connection between units

- Load-bearing glulam columns fastened with steel plates
- Compressed linen between LVL beams
- Cavity between plywood finishing



- Units load-bearing contact point
- Units airtight division line

Connection between 2 units linked by an interior staircase (left)



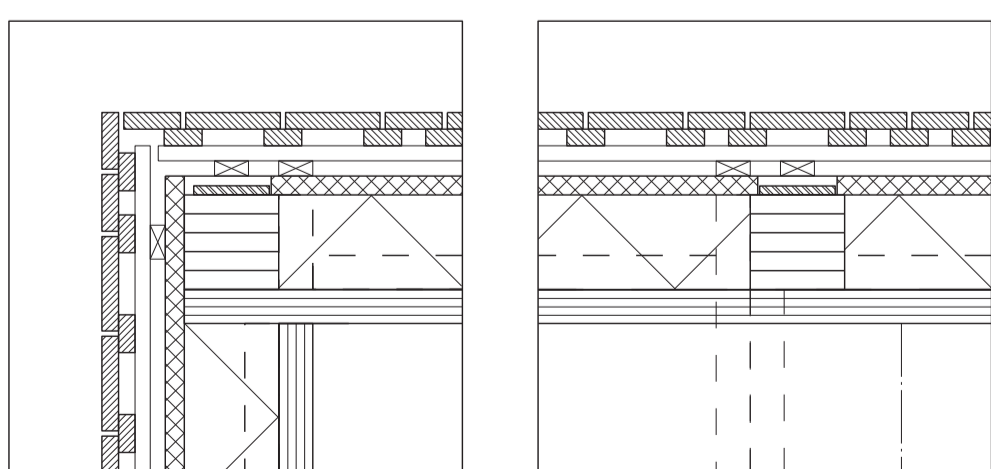
Typical wall constitution

- 45mm LVL panel
- 125mm cellulose insulation between 45x125mm LVL studs
- 25mm windbarrier board
- air gap between 22mm vertical battens
- 22mm horizontal battens
- 2x 22mm cladding boards

Foundations

- Columns fixed to steel beams with steel plates
- LVL stacks and sand levelers

Section details



Plan details