

Education

Eija Zitting
Head of Learning services



Purpose

We spark the game changers of tomorrow.

Focus of development: Future-led learning

Actions:

- We ensure high-quality and multilingual teaching that builds the foundation for learning working life skills.
- We widely attract degree students and life-wide learners.
- We continue to develop a diverse teaching portfolio for degree education and life-wide learning.
- We support students along their paths and we assure seamless life-wide learning.

Long-term direction (2035)

Growth without sacrificing quality, from **enrolment** to graduation and lifewide learning. Strategic enrollment management utilising novel digital means and platforms. The integration of int'l students.

Excellence in **student success** and learning experience by analytics, suitable digital tools and well-designed processes. Learning centricity is built on evidence-based pedagogical developments and the appreciation of teaching. Flexibility provided for digital learning is leveraged for intended learning outcomes. The multilingual approach in Aalto education in all degree levels is ensured.

Data-driven **wellbeing development** that is integrated in educational leadership at all levels. Comprehensive and holistic stance covering not only student wellbeing but also faculty and staff.

Aalto is known for its **multidisciplinary education**, entrepreneurial activities and its bold commitment to **sustainability** and **creativity**. Educational **programme portfolio management** in degree education (DE) acknowledging the life cycle of individual programmes. Systematic analysis of the viability of programmes according to 2-year curricula revision cycle, including attractiveness, academic results, quality of teaching and learning, and societal impact as well as employability.

In **Life-wide learning** (LWL), attention to the learning funnel (from reachable and affordable introductory courses to in-depth learning experiences) leveraging both our campus and online possibilities as well as stakeholder collaboration. Synergies between LWL and DE are explored and enhanced. These may range from positive learning experience benefiting from versatile learners in same courses to more structural arrangements enabling focused DE content and supplementing LWL offering.

Digital learning is enhanced both in blended and fully online modes. The focus will not be only on individual courses but on learning paths and on substantial pieces of our offering such as educational programmes.

Action: We widely attract degree students and life-wide learners

Target state

Our educational offering is communicated in a timely and user-friendly manner on innovative, national platforms.

Student recruitment is comprehensive, well-designed and implemented in collaboration between Aalto units. Our admission practices are seamless and versatile, catering to the needs of both degree education and lifelong learning (LWL). We use digital solutions in admissions where applicable.

We have implemented effective admission routes to degree education and life-wide learning, bearing in mind the different segments of learners as well as the need for flexibility in learning paths. Learner attraction in lifelong learning covers both individuals and organisations.

Area under very active development

- Societal needs
- National project in bachelor level
- changes in the regulative environment / tuition fees etc)
- Schools' active development of their educational portfolio



Action: We ensure high-quality and multilingual teaching that builds the foundation for learning working life skills

Target state

The guidelines of the languages of the degrees and instruction have been implemented at the level of programmes and courses. The faculty has been provided with instructions, tools and support for adopting an inclusive, multilingual way of working.

A shared understanding exists of the value of teaching and the recognition of teaching competence as an important factor in faculty career paths. There are attractive incentives and recognition mechanisms in place supporting the development of teaching and learning.

Pedagogical support focusing on the teacher and learner is available to help the community benefit from recent developments in fields such as data analytics and AI in learning.

Language Policy & Guidelines

—
Renewal during 2023



Aalto-yliopisto
Aalto-universitetet
Aalto University

Language Policy & Guidelines

**Languages of the degree and
instruction**

**Implementation Plan of
the Language Guidelines**

Overall principles based on feedback on guidelines

Some conflicting views in community, but roughly right

- Guidelines and multilingualism are good principles.
- Emphasizing participation opportunities and inclusivity
- Maintaining Finnish and Swedish as communication and service languages is important

Terminology

- Maintaining and developing the language of science in national languages
- Ensuring terminology and publishing in national languages

The role of national languages as the language of teaching and research should be strengthened.

- Especially in the bachelor studies, teaching should be offered more in national languages
- The use of Swedish language should be actually possible
- The teaching resources do not enable following the current language guidelines
- Ensuring the student's linguistic rights

More focus on multilingual and inclusive practices

Action: We continue to develop a diverse teaching portfolio for degree education and life-wide learning

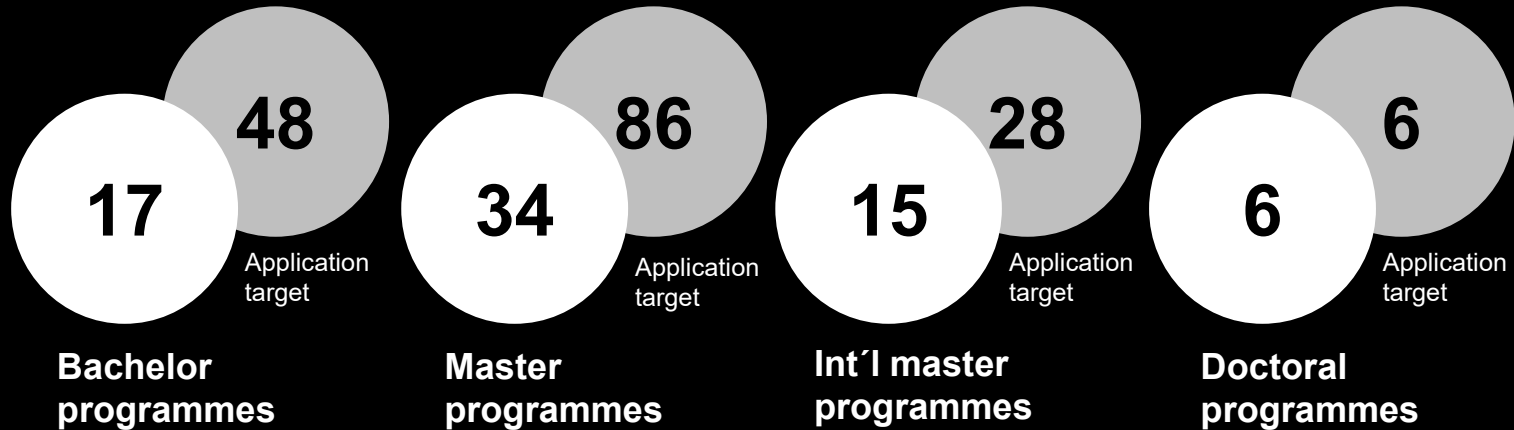
Target state

Portfolio development in degree education and in life-wide learning leverages the synergies between the two and highlights the spearheads of our research. Our portfolio includes new elements that help us to respond to the reskilling and upskilling needs of society.

We have implemented metrics and practices for developing a research-based and attractive educational portfolio. We collaborate and make use of the possibilities of cross-institutional studying.

We have a clear understanding of resource-wise educational planning with processes and mechanisms in place to both identify relevant areas and secure sustainable resourcing.

Aalto University programme portfolio



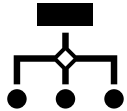
Programme directors' views on viable degree programmes



Programmes must have a purpose



Attracting the right students



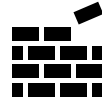
Programmes should be part of clear programme portfolio



Connections to the society



Connection to research



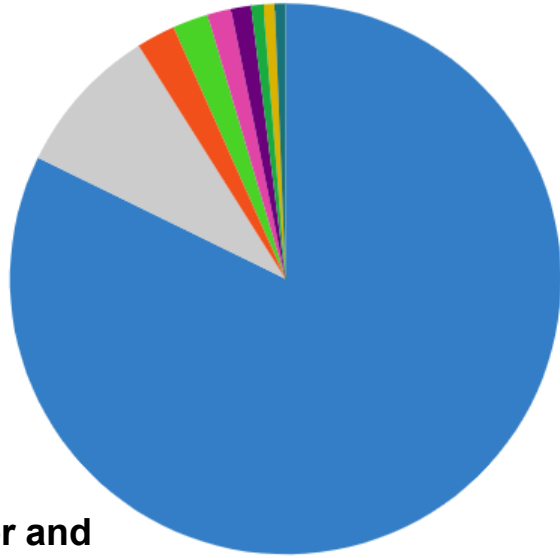
Resources



Continuous development

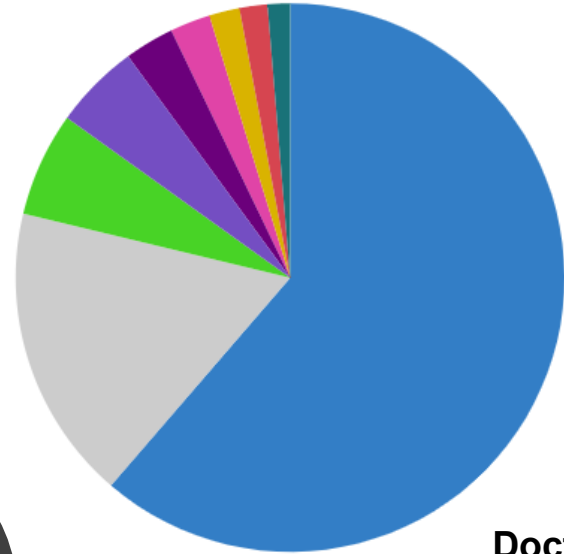
Degree students: top countries 2022 (1/8)

Finland Other Vietnam China Russia India United States Germany Italy



**Bachelor and
master students**

Finland Other China Iran India Russia Germany Pakistan Italy



**Doctoral and
licentiate students**

**Top
countries
2022**

Aalto total

Degree students total:

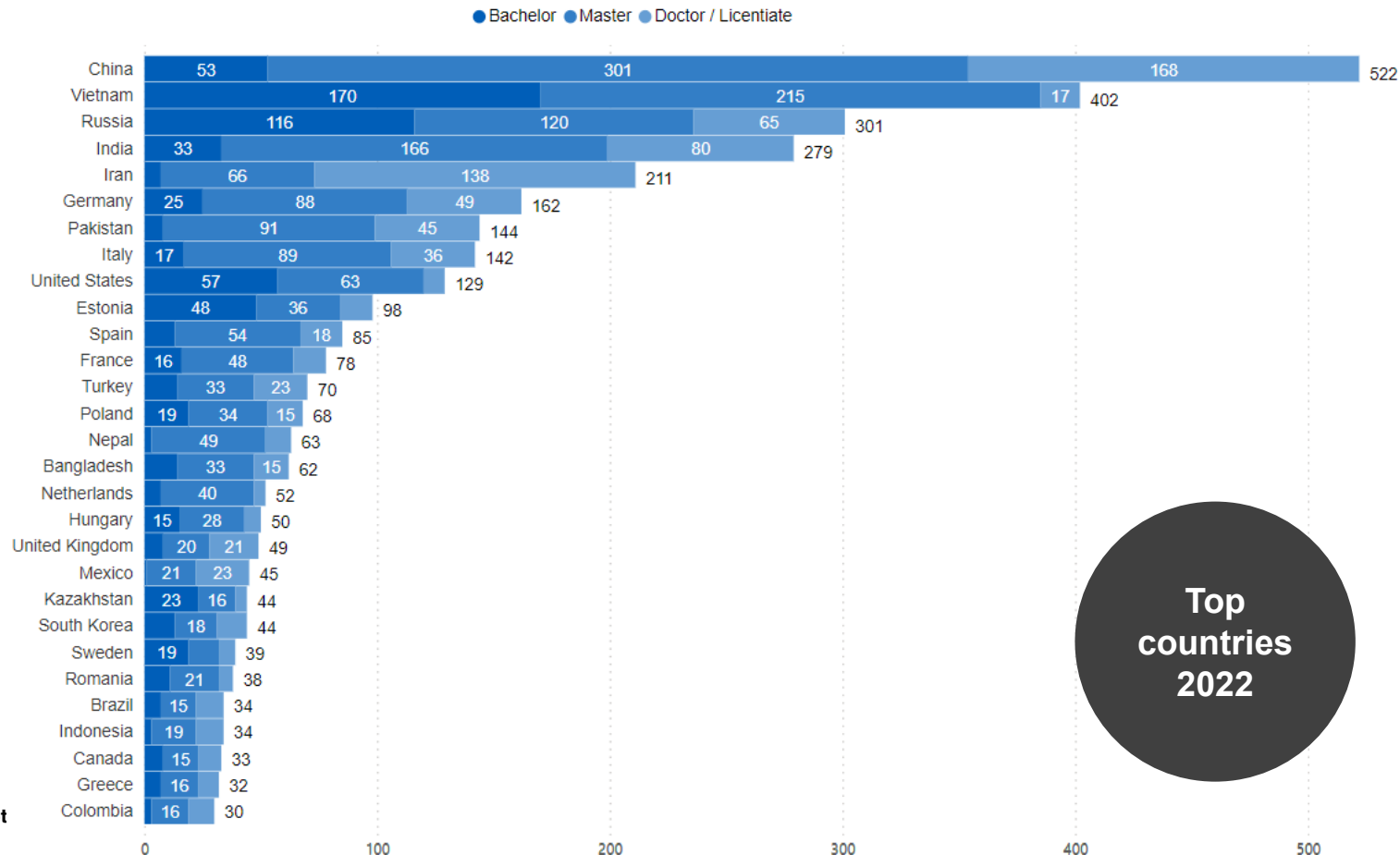
19 661

Degree students with
foreign citizenship:

4 033 (20.5 %)

Distinct nationalities:

117



**Top
countries
2022**

Open University

- Degree education courses for the wider public (quota places and OU implementations)
- Currently the students pay 15 €/ECTS + open HE studies in MEC funding model (appx. 130 €/ECTS). Changes expected both in payment regulation and funding model.

Summer School

- Summer School offers lifewide learning for international audiences, both students and people seeking professional development
- Intensive summer and winter courses (typically 2 weeks on campus) and customised courses
- Mainly non-degree courses, academic validation process
- Courses are fully funded by the visiting students' tuition fees

FiTech (Aalto)

- National network of technology universities coordinated by Aalto.
- Study offering is based on degree education. The main target group is adult learners in the work life, but majority of the offering is also available for degree students.
- LWL studies currently free of charge for learners (funding from MEC & SECLE)

Commercial LWL

- Offered by Aalto University Executive Education Ltd (Aalto EE)
- Reskilling and upskilling, aimed at organizations and individuals
- Customized content in various formats and product categories from microlearning to micro-credentials, certificates and diplomas
- Revenue share model with commercialised products between Aalto EE and Aalto University departments

Action: We support students along their paths and we assure seamless life-wide learning

Target state

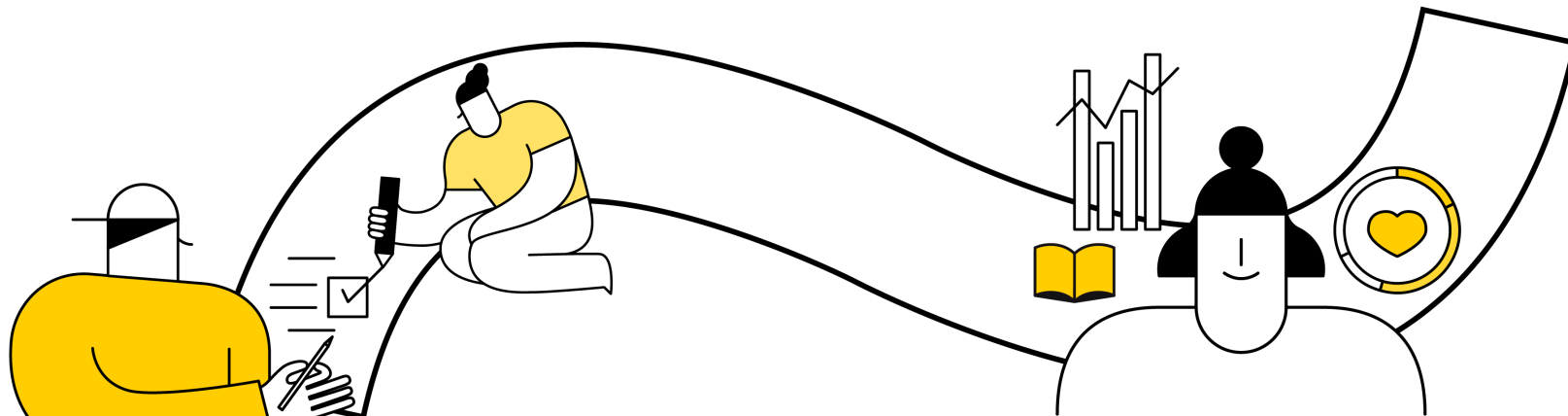
We ensure the continued academic progress of our degree students to allow them to reach target graduation times.

Our study paths from bachelor's to master's degrees enable flexibility and development of intrinsic motivation. We support continual learning after graduation with comprehensive lifewide learning opportunities. We have created a service path from admission to graduation, including work-life integration actions to support our international talents.

Aalto University is well-known for its supportive and inclusive learning culture. We have implemented sustainably resourced student guidance across the study path. Academic advising is an important part of our guidance culture.

AllWell?-student survey

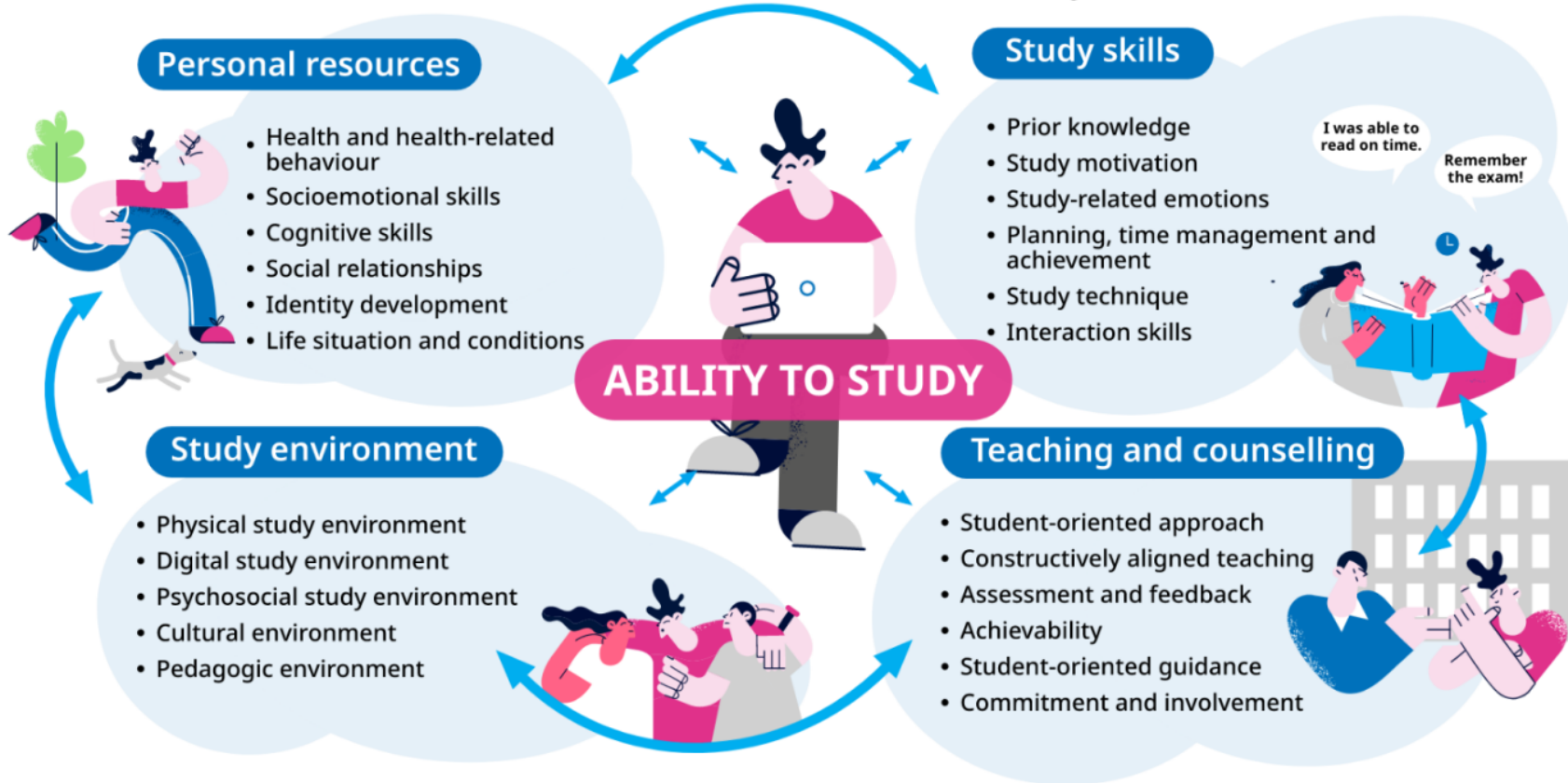
Target groups: all 2nd year bachelor students and 1st year master students



2024: Survey sent
to almost 4900
students

assesses **study-skills** and
study-well-being, the quality of
teaching and peer support

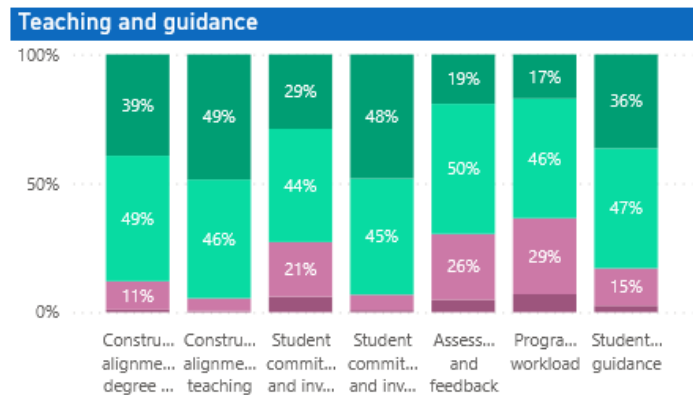
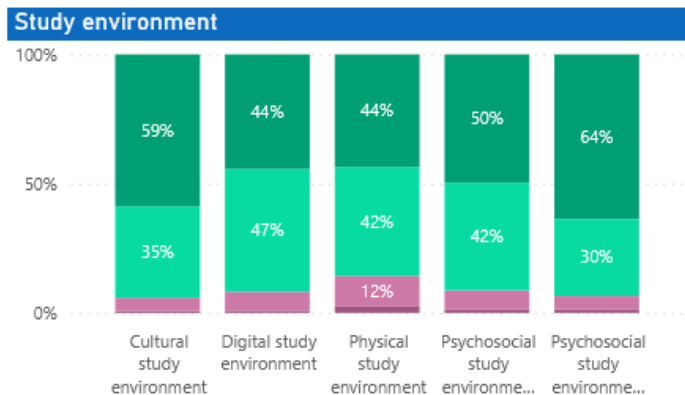
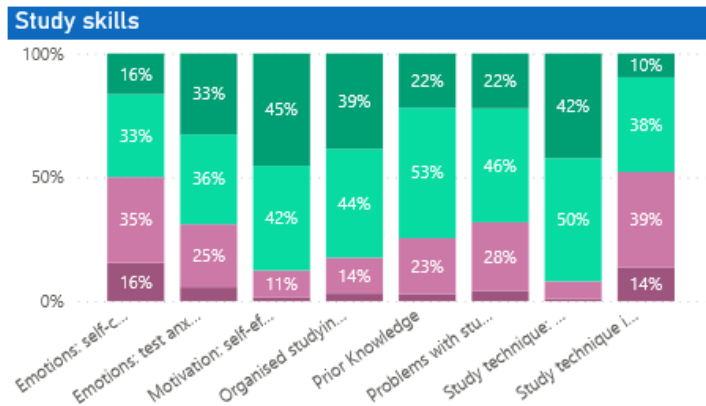
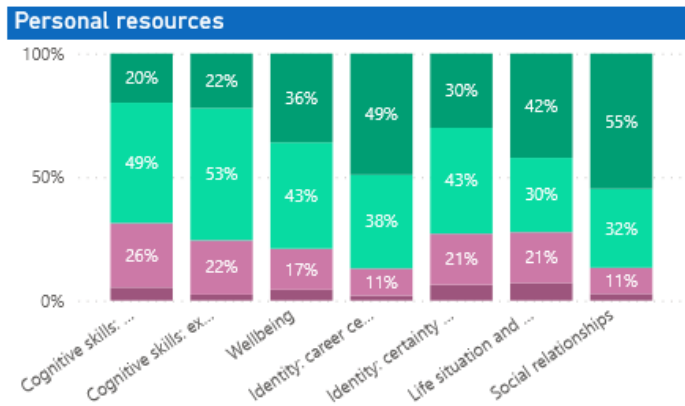
The ability to study forms and evolves in a dynamic interaction between the student and the study environment.



The study ability model updated in 2022 is based on the model published by Kristina Kunttu (2006).

AIWell? 2024

Holistic view on items related to study capability



Some takeaways of the open responses

- More flexibility in studies needed, e.g. course scheduling, different performance methods, lecture recordings and distance learning opportunities.
- More feedback from the teaching staff about assignments and exams needed.
- Equalizing the workload and load of the courses and more evenly dividing them into periods
- Support for the development of study skills and time management, e.g. integrated into teaching.
- Support for career considerations and opportunities to hear and discuss different career paths
- More available and bookable spaces for both quiet independent study and group work.



Aalto-yliopisto
Aalto-universitetet
Aalto University



aalto.fi