

A woman with long red hair is shown in profile, looking upwards and to the right. She is wearing a grey sweater. In the background, there is a large, faceted crystal sphere that appears to be made of many small, clear and purple crystals. The background is a mix of blue and purple hues with some abstract, wavy patterns.

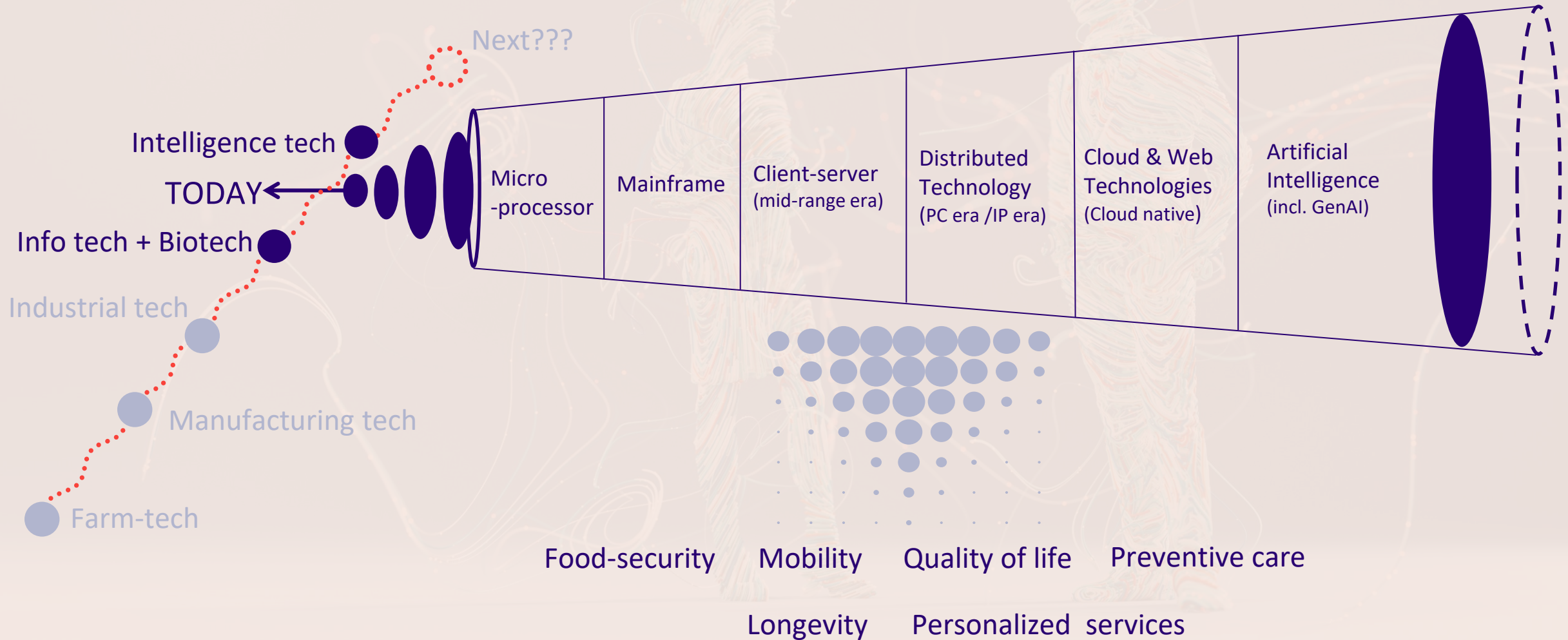
Riding the AI wave!

CEO's perspective on AI

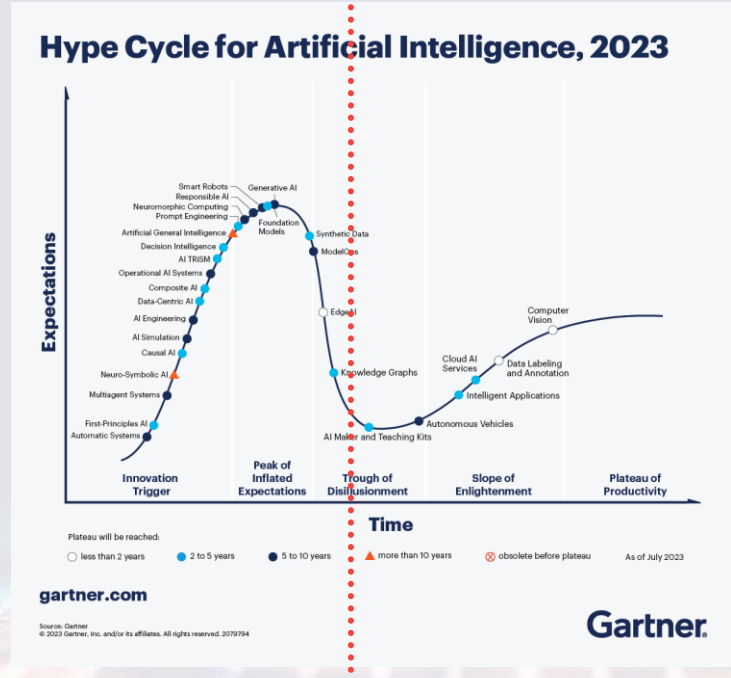
Kimmo Alkio
CEO, Tietoevry

 tietoevry

Technology has always advanced humanity, with each wave augmenting the previous – we are at Intelligence wave now



Clarity of one's role in AI evolution is key



Technology creators

Innovate
Invest
No clear leader

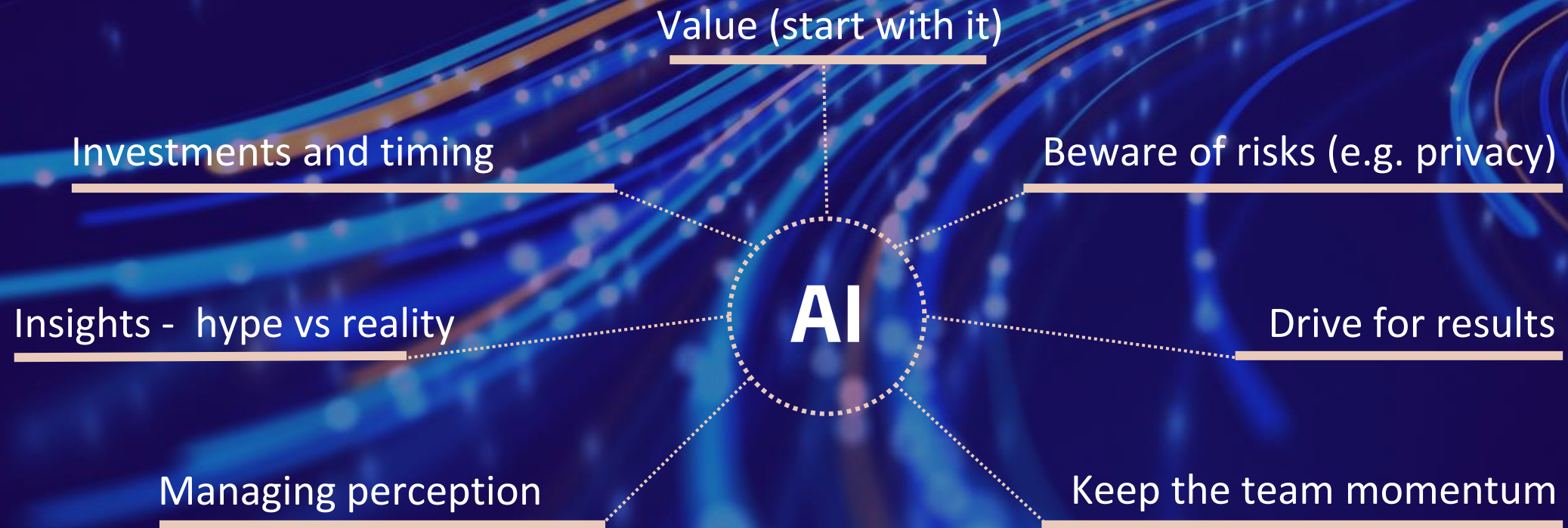
Clear leaders
Build scale
Expand

Technology users

Understand
Proof-of-concept
Engage

Make tech bets
Scale capabilities
Accelerate outcomes

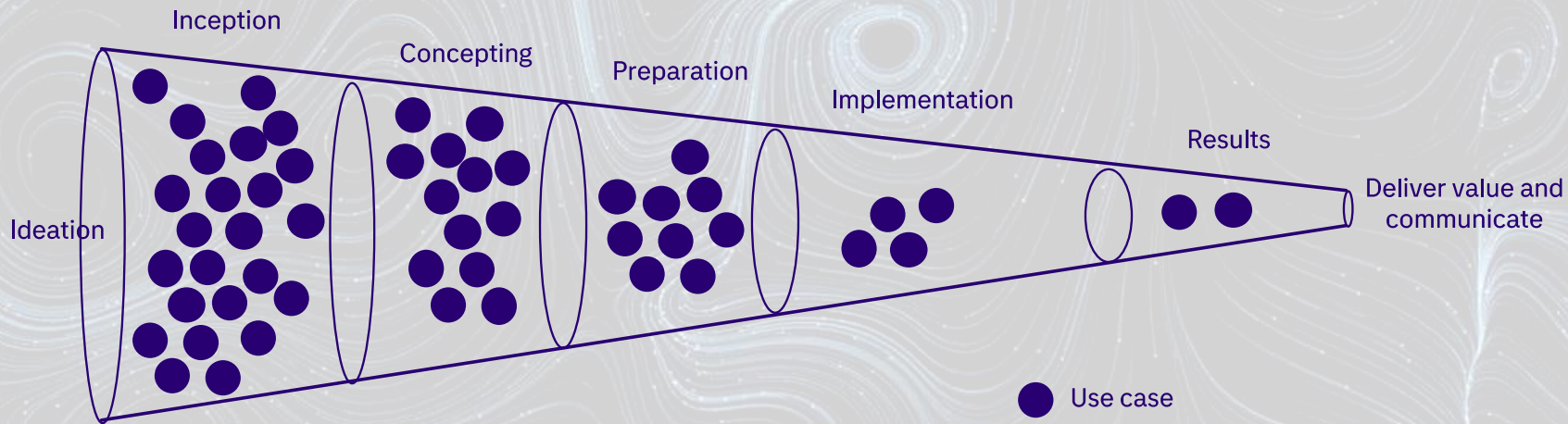
Riding AI (or any technology) wave is a multi-dimensional endeavour



Exciting experiences as Tietoevry!



Systemic GenAI approach



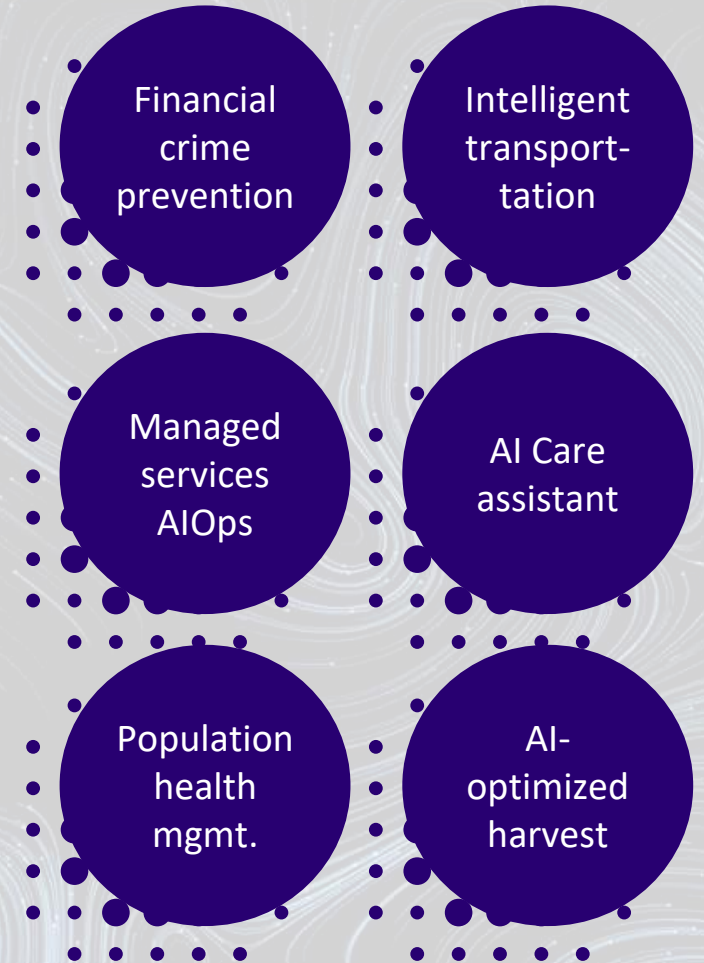
Structure

Community

Technology

Policy

Building AI-embedded products and services



AI gameplan starts with personal insights and beliefs

Actively learn
and participate

Timing
is the key

Build mass
momentum
to adopt

Innovation

Competitiveness

Efficiency

Financial results

Developers of digital futures



HUMANITY

ETHICAL

DIVERSE

SOCIETIES

BUSINESS

CIRCULAR

SUSTAINABLE

Thank you