

ERIT Urban Mobility matchmaking
Public Realm call for 2022

Print screens by Petri Allekotte 1.4.21

Morning pitches:

ORGANISATION	TITLE	SPEAKER	POSITION
City of Milan	TBC	Rossella Ferorelli	Project Manager / Urban Designer
CARNET	FURNISH-KIDS & UNI-FURNISH	Inés Aquilué	Project Manager
Politecnico di Milano - DASTU	R-C-C : REGENERATIVE - CULTURAL - COMMONS Sustainable-mobility-based cultural regeneration in heritage sites	Antonella Contin	Researcher and professor
PowerHUB	City4People	Lucie Bilá	Project Manager
The Technion	Designing Cities for Active Mobility of People with Disabilities	Sagi Dalyot	Asst. Prof.
EPFL Swiss Fed. I. of Tech. Lausanne	Public benches - Service stations for active mobility & citizen's well-being	Renate Albrecher	Scientific assistant
Politecnico di Milano	Regenerate railway stations in MultiService Hubs	Pierluigi Coppola	Professor
TUM	Co-City planning	Ana Rivas	Research Associate
Humankind	TheWayToGo - reimagining streets, the Dutch way	Lior Steinberg	Urban planner, co-founder
Q&A			

Afternoon pitches:

ORGANISATION	TITLE	SPEAKER	POSITION
WeSolve	WeSolve: citizen engagement for co-creating urban spaces	Simone Leomanni	CEO
University of Lisbon	Citizen Engagement for Suitable Empowerment	Rosário Macário	Professor
Institute for Advanced Architecture of Catalonia	Prototyping Future Cities from Barcelona's Valldaura Labs	Vicente Guallart	Founder, Director & Principal Architect
Systematica	Designing Inclusive Public Spaces Through Innovative Tools and Metrics	Andrea Gorrini	Transport Research Consultant
University of Malta	Networks of Green Open Space in Dense Urban Areas	Sarah Scheiber	Urban Designer / Planner / PhD Researcher / Lecturer
HOPU	IoT & AI to address climate change: Discover all that the air knows about your city	Antonio Jara	CEO
PARK-Cy	New-Age Bike Parking Solution for a Sustainable City	Jeet Banerjee	Founder
ModelMe3D B.V.	Plan the future of mobility and public spaces	Samuel Alvarado	CEO
Dedagroup Public Services	Improve the quality of the Urban Space by setting up a City Data Space	Luca Giovannini	Information Systems Analyst

Creating Public Realm – Strategic Focus



Goal is to generate social innovation by **improving and transforming streets and public spaces** with **tactical urbanism** and **street experiments** as part of a city-wide approach for liveable cities.

- Projects will implement pilots for inclusive, safe and accessible public realm design in a city or town, and build momentum for long-term policy change in communities – especially in disconnected and less central neighbourhoods - to help improve livability for all local residents.
- Tactical urbanism projects will be complementary actions within a city-wide system of public spaces and offer better social and physical connectivity for urban residents.
- Strategies for street experiments can serve different primary functions: Moving people and goods; Improving access for people by prioritising multimodality; Improving space for commercial goods and services to reach customers and markets; Creating spaces for social and community activity; Greening by creating space for environmental benefits and green space.



Expected Impact

- Contribute to better use, design and management of streets and squares and their transformation into places, reduction of space allocated to motorised traffic, and increased public participation in local projects.
- Potential for replication and scale in other European contexts.
- Better use and quality improvement of public space, higher levels of liveability, improved multimodal access for people taking public transport, walking, and bicycling and reduced greenhouse gas emissions for the city improved personal safety and accessibility perception in public space.



Examples

- Piloting policies to guide the redesign or reallocation of street space with temporary street experiments (e.g. new design principles guidance), reallocating curb space for multimodal access, including for walking and bicycling, actively managing existing on-street parking,
- Conception and implementation of tactical urbanism pilots that illustrate how public space can enhance sustainable living and mobility choices, and contribute to increase social inclusion and community cohesion,
- Testing new ways and tools to survey public spaces to gauge people's perception of livability and accessibility in their neighbourhood and the city,
- Hosting participatory workshops with the civil society that address the design, use, implementation and maintenance of new public spaces created,
- Knowledge transfer initiatives and learning material to raise awareness about public spaces among the local communities and after the project.

Capitalising on adopted city plans and strategies

Building your public realm project on ongoing city projects and plans, such as:

- Implementing sustainable urban mobility measures as part of a SUMP or mobility strategy;
- City masterplan;
- Urban development and regeneration plans, etc.



ERIT Urban Mobility matchmaking
Public Realm call for 2022

Print screens by Petri Allekotte 1.4.21

Morning pitches:

ORGANISATION	TITLE	SPEAKER	POSITION
City of Milan	TBC	Rossella Ferorelli	Project Manager / Urban Designer
CARNET	FURNISH-KIDS & UNI-FURNISH	Inés Aquilué	Project Manager
Politecnico di Milano - DASTU	R-C-C : REGENERATIVE - CULTURAL - COMMONS Sustainable-mobility-based cultural regeneration in heritage sites	Antonella Contin	Researcher and professor
PowerHUB	City4People	Lucie Bilá	Project Manager
The Technion	Designing Cities for Active Mobility of People with Disabilities	Sagi Dalyot	Asst. Prof.
EPFL Swiss Fed. I. of Tech. Lausanne	Public benches - Service stations for active mobility & citizen's well-being	Renate Albrecher	Scientific assistant
Politecnico di Milano	Regenerate railway stations in MultiService Hubs	Pierluigi Coppola	Professor
TUM	Co-City planning	Ana Rivas	Research Associate
Humankind	TheWayToGo - reimagining streets, the Dutch way	Lior Steinberg	Urban planner, co-founder
Q&A			



City of Milano

Shift to active modes of transport (walking & cycling)

- **Narrow sidewalks** for pedestrians are limiting the flow of people, are increasing risks for accidents and are decreasing comfort for walkers (ID013)

Improve the quality of public space

- **Transferrable and well functioning approaches to designing public space** that enhance social interactions, equality by innovative practices (ID093)
- To **reduce number of private cars parked** on-street to enhance public space quality (ID095)
- **Improve the quality of the urban landscape** by redesigning city areas assuring the most part of the city will be Zero Emission Zone (ID101)

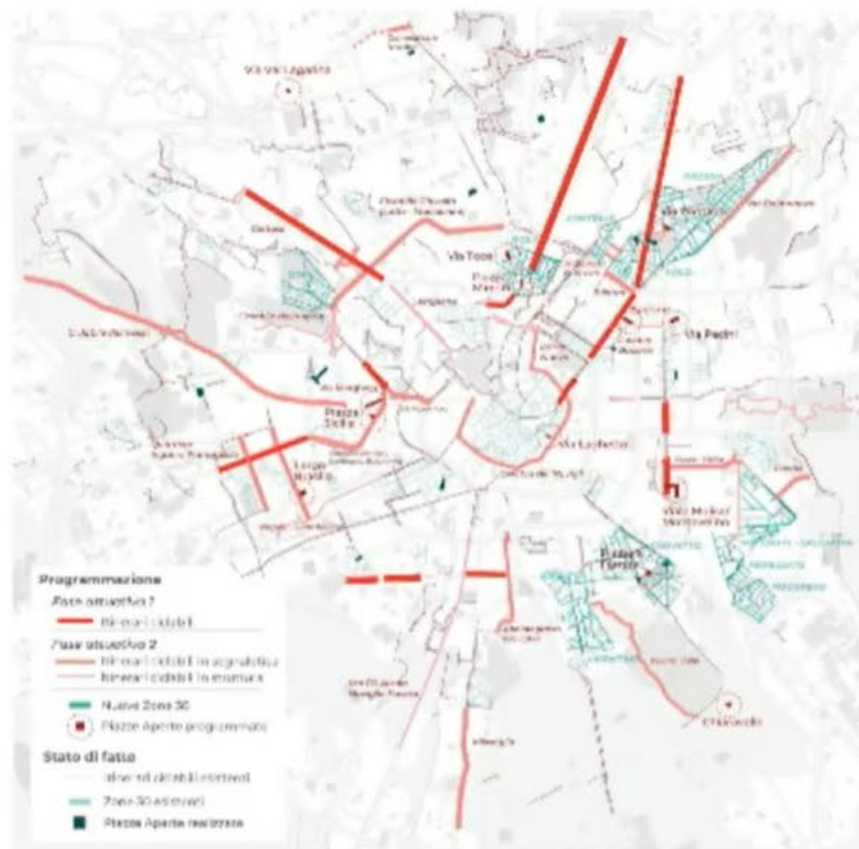
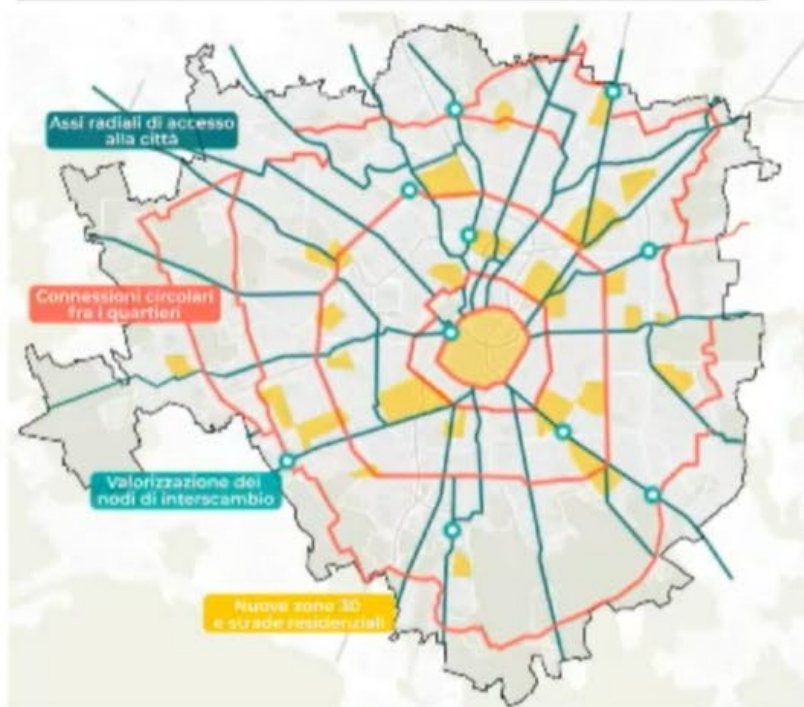
LIVE 41

Our solution framework: a 15 minutes city

Milano 2020

Strategia di adattamento

Documento aperto al contributo della città



Rossella Feror...

15 minutes: moving sustainably on a safe & healthy and active mobility network

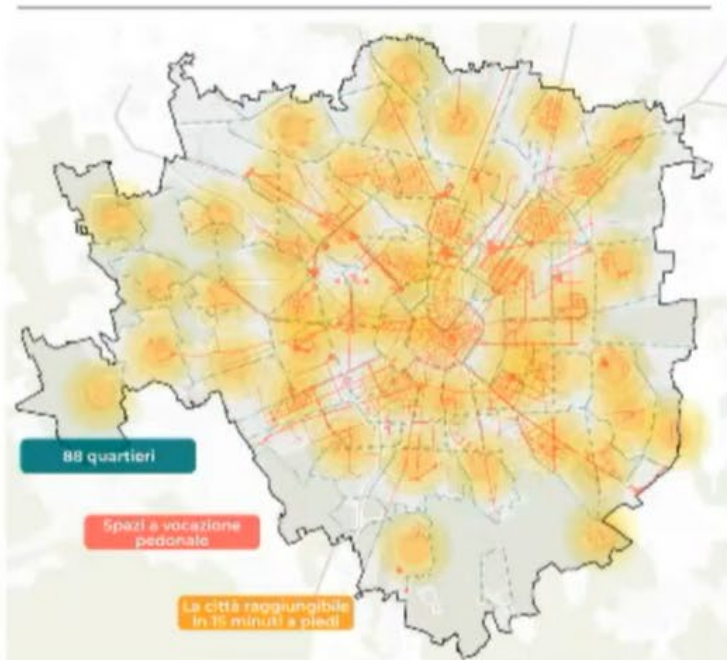


Our solution framework: a 15 minutes city

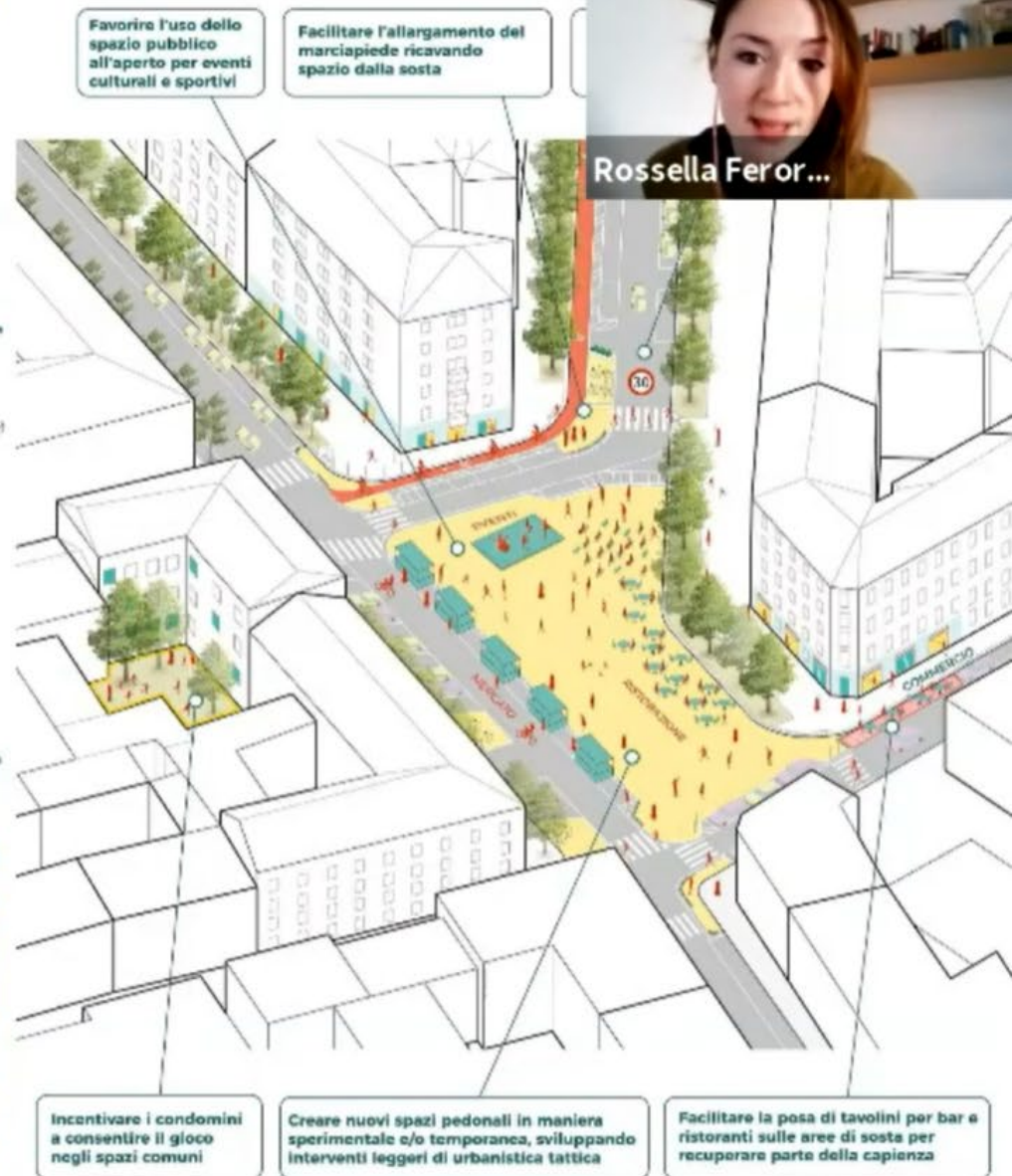
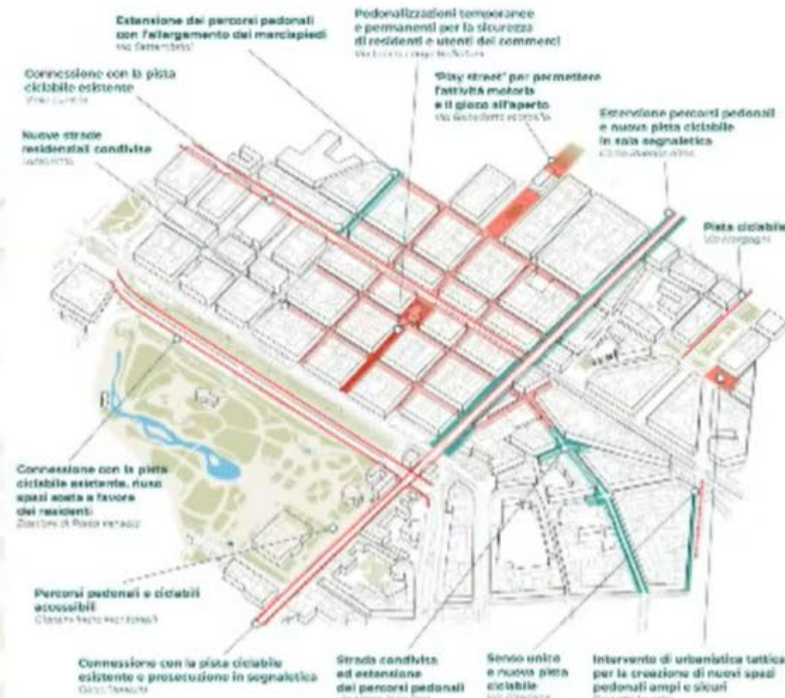
Milano 2020

Strategia di adattamento

Documento aperto al contributo della città

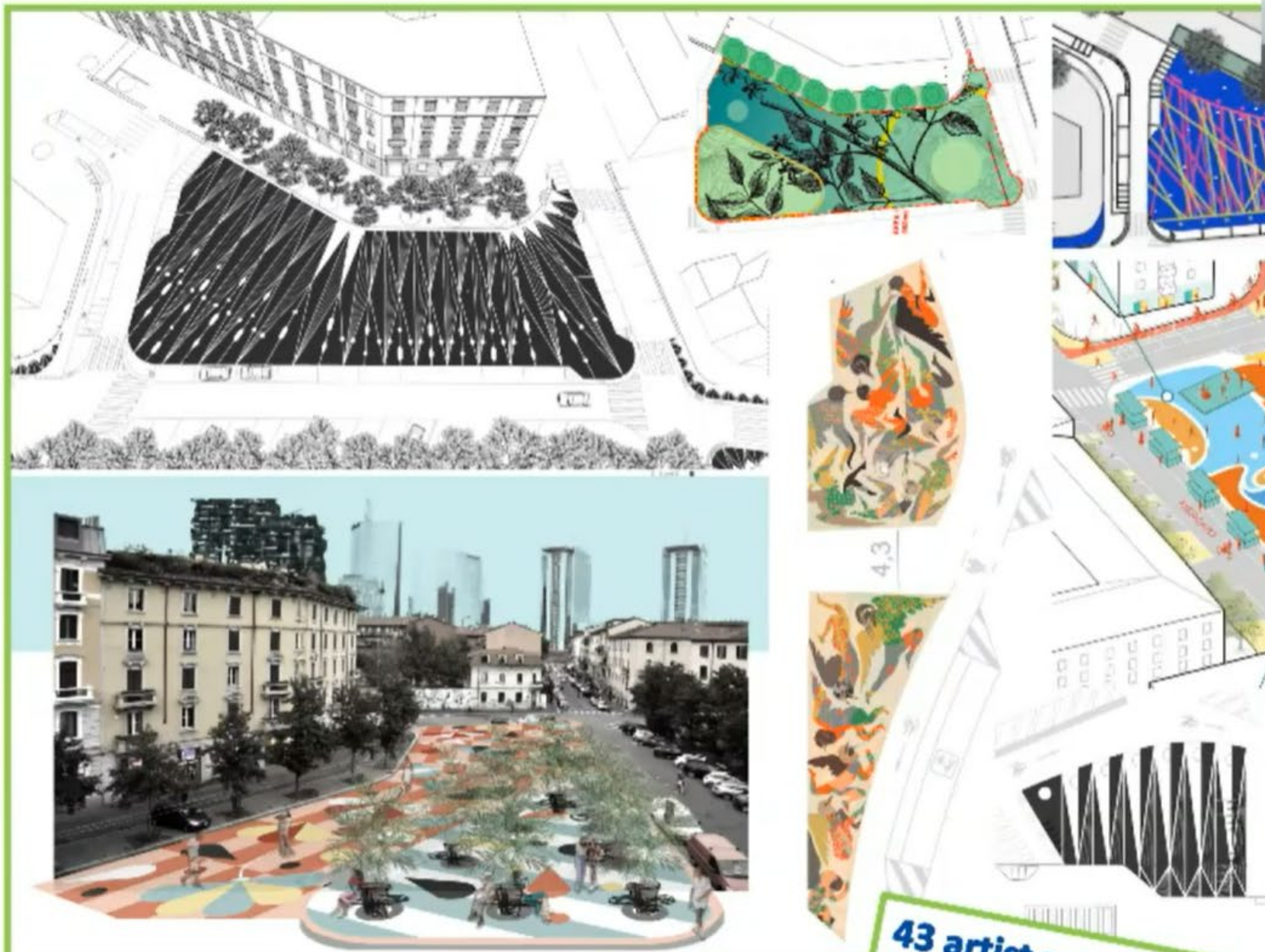


15 minutes: finding quality spaces everywhere just round the corner

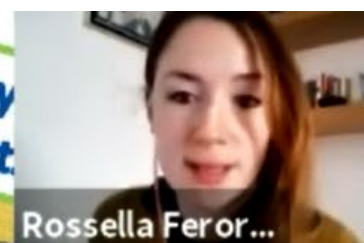
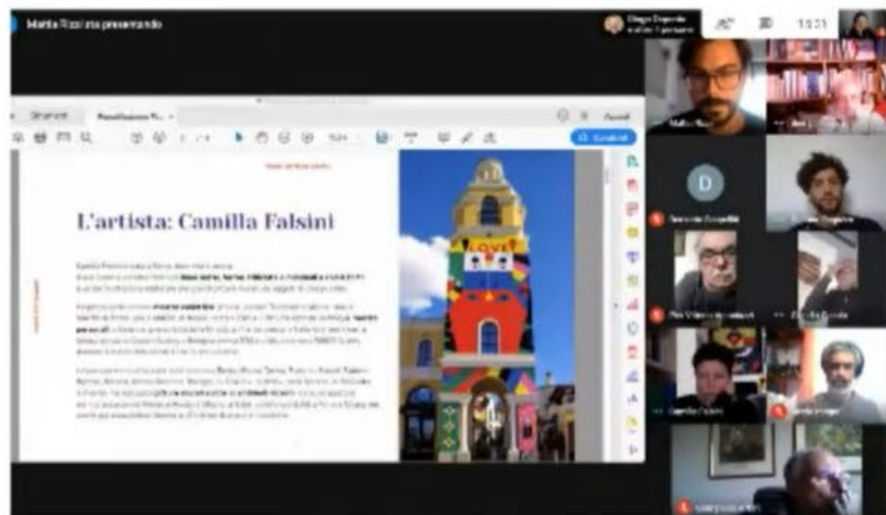


Rossella Feror...

One of our solution projects: CLEAR / CLEAR2



One of our solution projects: **CLEAR / CLEAR2**



One of our solution projects: CLEAR / CLEAR2



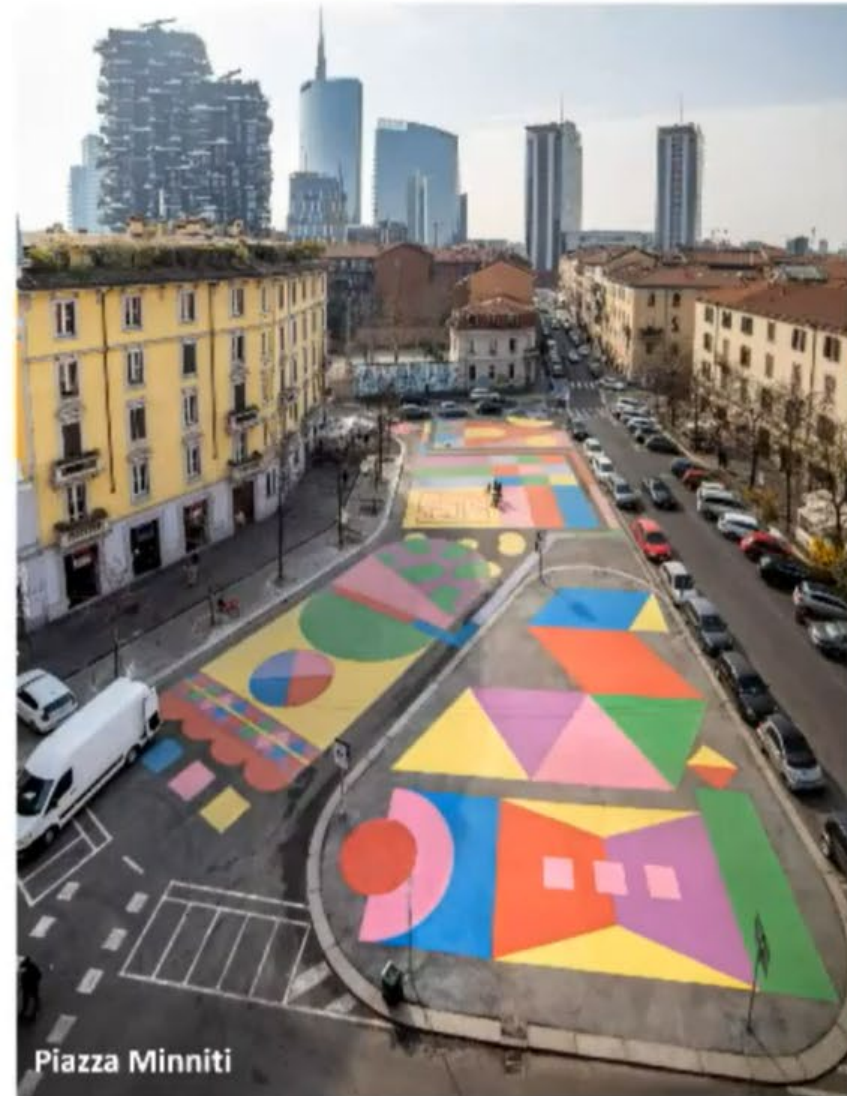
Piazzale Loreto



Rossella Feror...



One of our solution projects: **CLEAR**





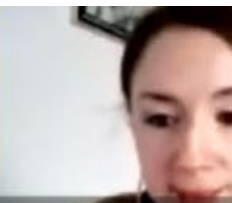
City of Milano

What we are learning:

- **Crossdisciplinary practices** are able to extend the possibilities of Urban Mobility far beyond its classical fields
- **Temporary and *ad interim* experiments** can teach how to imagine the city we want in the long term
- **Quality, beauty and functionality** can be cheap

Who we are looking for:

- Cities who want to experiment together with us in small, light but **real urban transformations**
- Cities who are ready to **push boundaries** of classical administrative fields to trigger innovation



Rossella Fero

LA VANGUARDIA

Sociedad

NATURAL / BIG VANG / TECNOLOGÍA / SALES / QUÉ ESTUDIAR / JUNIOR REPORT / FORMACIÓN / VIVIR SEGURO / CATALUNYA RELACION

Directo Coronavirus: Estado de alarma, vacunación y nuevas restricciones, en directo | Catalunya: U

CAT-MOVILIDAD DISEÑO

Nace FURNISH, un proyecto para mejorar la movilidad frente a la COVID-19

www.barcelona.cat

Centro de Innovación

Servei de Premsa

Barcelona testeja dos elements urbans nous per dinamitzar les terrasses i els entorns escolars

Comune di Milano @ComuneMI · Sep 15, 2020

C'è tempo fino al 25 settembre per partecipare a FURNISH, la call per Fab Labs, gruppi di ricerca, designer e makers che propongano idee innovative per ridisegnare gli spazi pubblici.

Per candidarsi furnish.tech

@carnetBCN
@la_upe #cities
@elisavabcn
@eiturbanmob

"If you can change the street, you can change the world"

Janette Sedik-Khan

FURNISH

Call for Fab Labs, groups of research, designers and makers to propose innovative ideas for redesigning public spaces.

Workshop: 10th Oct 2020

FURNISH

Inés Aquilué

FURNISH-KIDS / UNI-FURNISH

MATCHMAKING EVENT SERIES BP2022

Area: CREATING PUBLIC REAL

FURNISH: EIT Success Story 2020

CARNET

zoom

Image: NOT-10 Team

[FURNISH 2022]: FURNISH-KIDS & UNI-FURNISH



Idea Lead: CARNET

Solution Description:

FURNISH-KIDS

- Ideation process
- Co-Creation process
- **Children involvement** in co-creative process
- Implementation and testing of urban solutions
- **Urban elements for children**

UNI-FURNISH

- Ideation process
- Co-Creation process
- **University Community involvement** in co-creative process
- Implementation and testing of urban solutions
- **Urban elements in campuses**



Images: EAUM & I+Arq, IAAC, Elisava and NOT-19 Teams

[FURNISH 2022]: FURNISH-KIDS & UNI-FURNISH

Inés Aquilué

Addressed problem:

FURNISH-KIDS

- How to improve urban public spaces for children close to schools (playgrounds, accesses to schools, etc.)?
- How to engage children in the production of urban public spaces?

UNI-FURNISH

- How to improve the relation between University Campuses and the City?
- How to improve social interaction and common spaces in campuses?

Needed resources and partners:

FURNISH-KIDS

- Cities with children urban areas under-used/damaged/inappropriate

UNI-FURNISH

- Universities with campuses: open campus, urban campus, etc.

City4People

Citizen engagement tool for Urban Planning

The needs and desires of the public in urban planning processes are not well reflected as communication faces growing logistical difficulties.



Software application

- questionnaire campaigns
- easily operated
- easily accessible



covid hacks



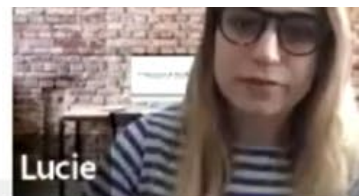
complete info
service



higher
engagement

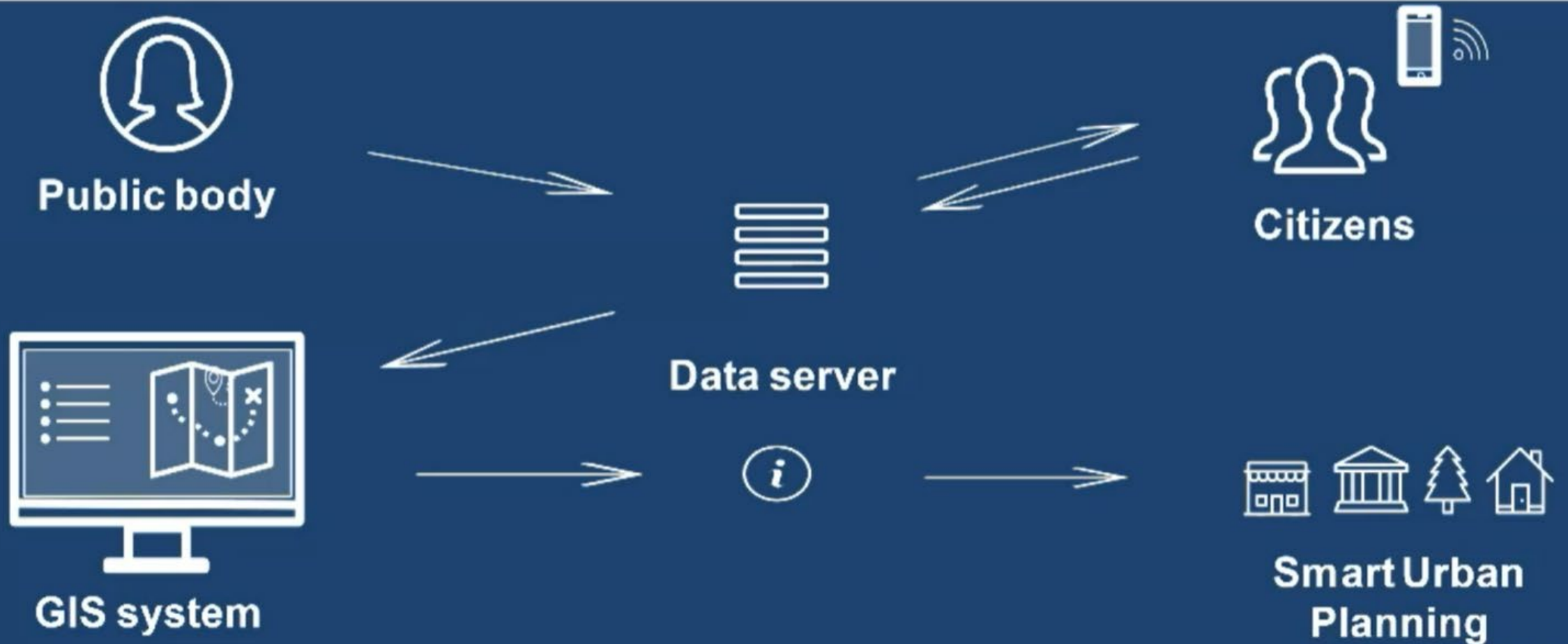


- GIS Data Integration
- Big Data Analysis
- AI Systems
- Automated Processes



How does it work?

Citizen engagement tool for Urban Planning

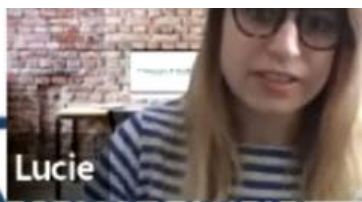




**Find out more by
contacting Lucie!**

lucie@powerhub.cz

PowerH
Power for Ventures



Funded by the
European Union



www.powerhub.cz

ALLIES

sAfe mobiLity isLands for Impaired pEdestrianS

Asst Prof Sagi Dalyot



Sagi Dalyot

- Interpretation, mining, and integration of contributed user-generated spatio-temporal data (geodata sciences).
- Generating understandings and technological solutions for city mobility and walkability equality.



<https://ecsl.net.technion.ac.il/>





- Municipalities have started rethinking city design to reclaim lost space to motorized transport to create zones that are safe and connected for walking.
- The COVID-19 pandemic was - and still is - a timely evidence of how essential attractive walking-approachable streets and leisure areas are to citizens.
- E.g.,
 - “The 15-Minute City” that aims to put people at the center of urban transformation.
 - Berlin's state parliament “pedestrian law” - an amendment for improving traffic and safety conditions.



Source: Luc Nadal



Sagi.Dalyot

- Accessibility – the right of people with impairments to be on equal basis with others to the physical environment.
- Creating ‘efficient’ ways to connect travel origins and destinations for impaired people by creating suitable street designs, removing barriers, offering supportive approaches.
- According to environmental properties, each physical entity provides several functions, such as walkability, and this will, in turn, modulate issues, such as accessibility and suitability.
- E.g.,
 - European Concept for Accessibility (ECA, 2003)
 - The Convention on the Rights of Persons with Disabilities (UN, 2006)



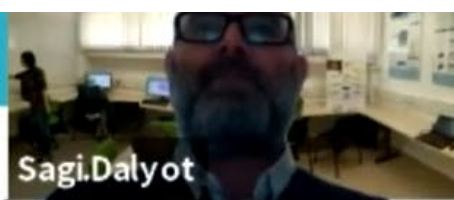
Source: Eurosocal



Sagi.Dalyot

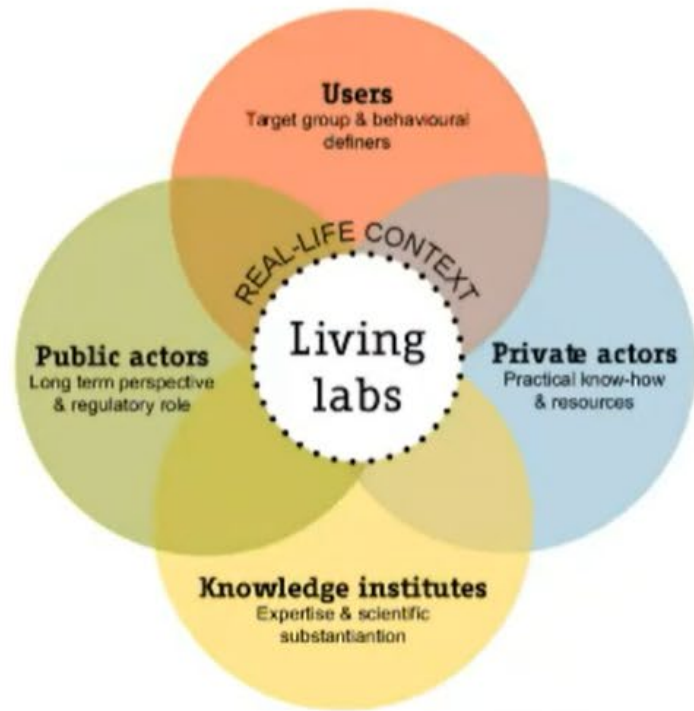
- Cities reclaiming efforts continue to overlook the needs and preferences of, e.g., visually impaired pedestrians, older people and people in wheelchairs.
- Mobility strategies seem to neglect these communities that might not be able to safely navigate **to/in** these “safe” zones; e.g., 47% of pedestrians that die on EU roads are over the age of 65 (European Transport Safety Council, 2020).
- Although reclaiming efforts are constructive and reconnect citizens, they are still non-inclusive, upholding unwanted social isolation of mobility impaired communities that ***continue to be disallowed safe and accessible city travel.***





Sagi Dalyot

- An accessibility of a place or a route is assessed based on the interactions between human capabilities and environmental factors.
- Changing the perception of urban environment planning and its mobility services, focusing on ***connected safe mobility islands***, towards including mobility impaired pedestrians as active stakeholders towards policy change.
- Create living labs that:
 - ***municipalities, public, users, academics*** (policy, know-how): investigate the navigation preferences and requirements of these communities, including their interaction with other modes of transport (e.g., e-scooters and cars) -> customized city accessibility and safety mobility metrics -> adaptive urban policies in terms of safe connected mobility islands that can be easily accessed.
 - ***municipalities, companies, public, users*** (technology, services): adapting and introducing technologies designed to reducing road conflicts (e.g., micro-mobility) and promote public participation -> raise awareness and involving citizens in the upholding of safe mobility islands.



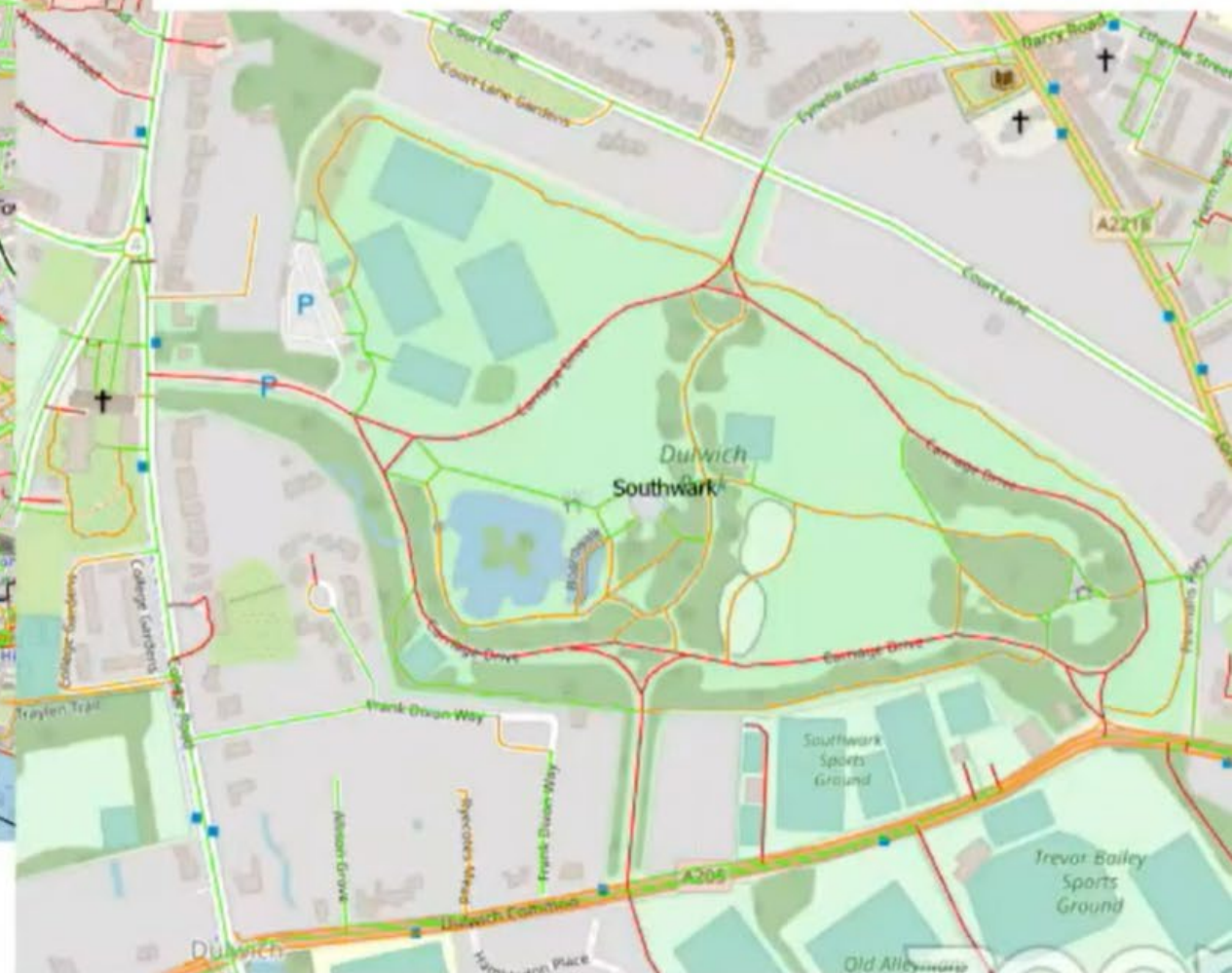
Source: Steen and van Bueren, 2017



Assessing the accessibility for visually impaired pedestrians to public areas:



City center, City and County of the City of London



Dulwich Park, Southwark



ALLIES - sAfe mobiLiTy isLands for Impaired pEdestrianS



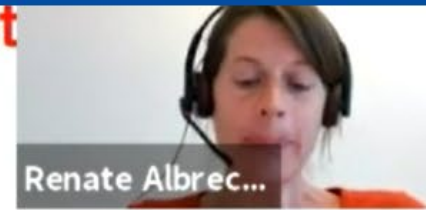
Sagi.Dalyot

According to the European Transport Safety Council report (2020), a significant proportion of people have some degree of reduced mobility - ***their needs must be understood before facilities are designed or redesigned.***

ALLIES will promote the integration of these communities through public participation to ***generate missing policies and planning perspectives related to the creation of connected safe mobility islands.***

Developing customized technologies and services that will allow the public to be a ***dominate stakeholder in the process lifecycle*** of rethinking urban environments that are equally accessible and safe to walk to all citizens.

Enhance liveability in terms of city mobility and walkability equality, ***being socially inclusive and environmentally sustainable***, improving the quality of life of mobility impaired communities.



Laboratory of Urban Sociology - lasur.epfl.ch

- Specialisation on urban mobility
- Modal choices
- "Motility"-index

Renate Albrecher - renate.albrecher@epfl.ch

Active Mobility & Public realm

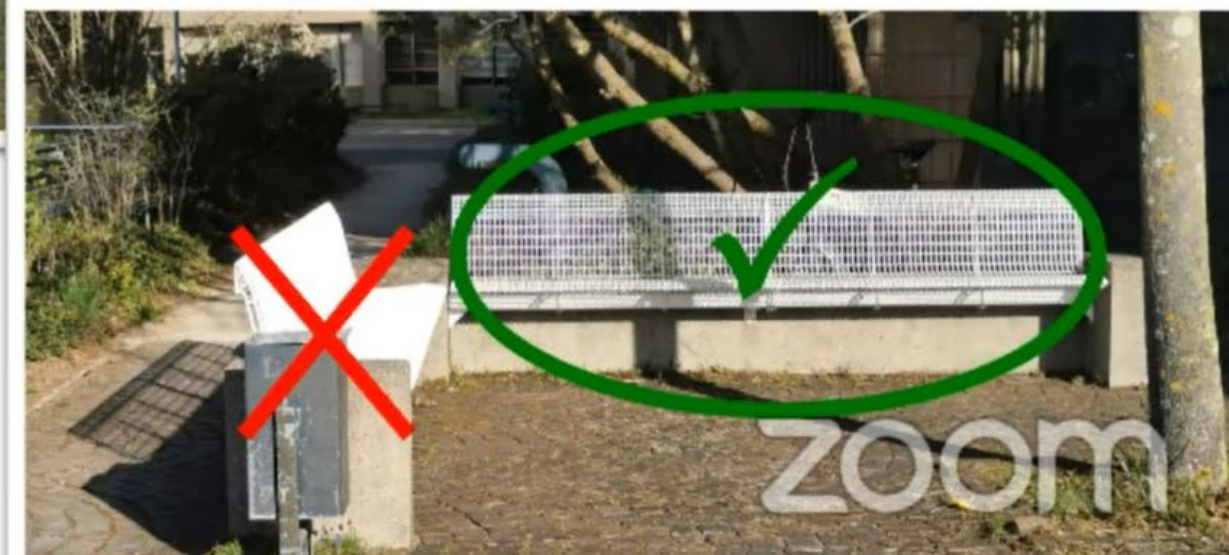
Public benches

Service stations for active mobility & citizen's well-being

Understand usage & non-usage of benches



Renate Albrec...



Citizens ?



City

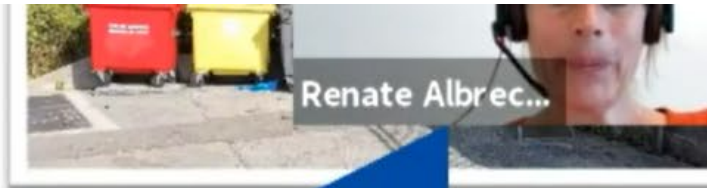
Example

10'000 benches (e.g. Zürich) à € 2'000
= € 20'000'000

Annual maintenance à € 100/bench
= € 1'000'000

Architect

Bench-
Producer's
Catalogue

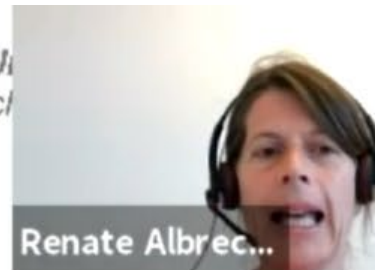


Renate Albrec...



Knowledge gap :

Citizen's needs – Cities policies - Decision-making



Renate Albrecht...

Citizen engagement

Improvement of city neighborhoods, representing collective culture and inhabitant's well-being
Better use of public space, higher levels of livability

« CITIZEN BENCH »

Get citizen's feedback on missing and existing benches

- Understand citizen's heterogeneous needs, preferences and usages
- Web-App & Method (Pilot: 2021 Munich)



Additional cities as testbed in 2022 (2023)



Academics

Innovation in governance, regulation frameworks, planning processes
Collaboration and access to knowledge

« SEATING »

Identify knowledge gaps and in(formation)-needs in Cities

- Understand cities decision-making on public seating
- Identify standard-knowledge & best practise & cities (in)formation needs
- Training-concept

Activity moved from 2021 to 2022 !

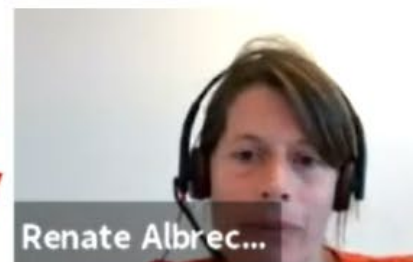


Two cities can still join





Swiss Federal of Technology in Lausanne



Renate Albrec...

Laboratory of Urban Sociology - lasur.epfl.ch

- Specialisation on urban mobility
- Modal choices
- "Motility"-index

Renate Albrecher - renate.albrecher@epfl.ch

« CITIZEN BENCH » - Get citizen's feedback on missing and existing benches

« SEATING » - Identify knowledge gaps and in(formation)-needs in Cities

.. and any other bench-topic !

IdeationWorkshop

Challenge Area: Creating Public Realm



creating public realm @Polimi

Pierluigi Coppola

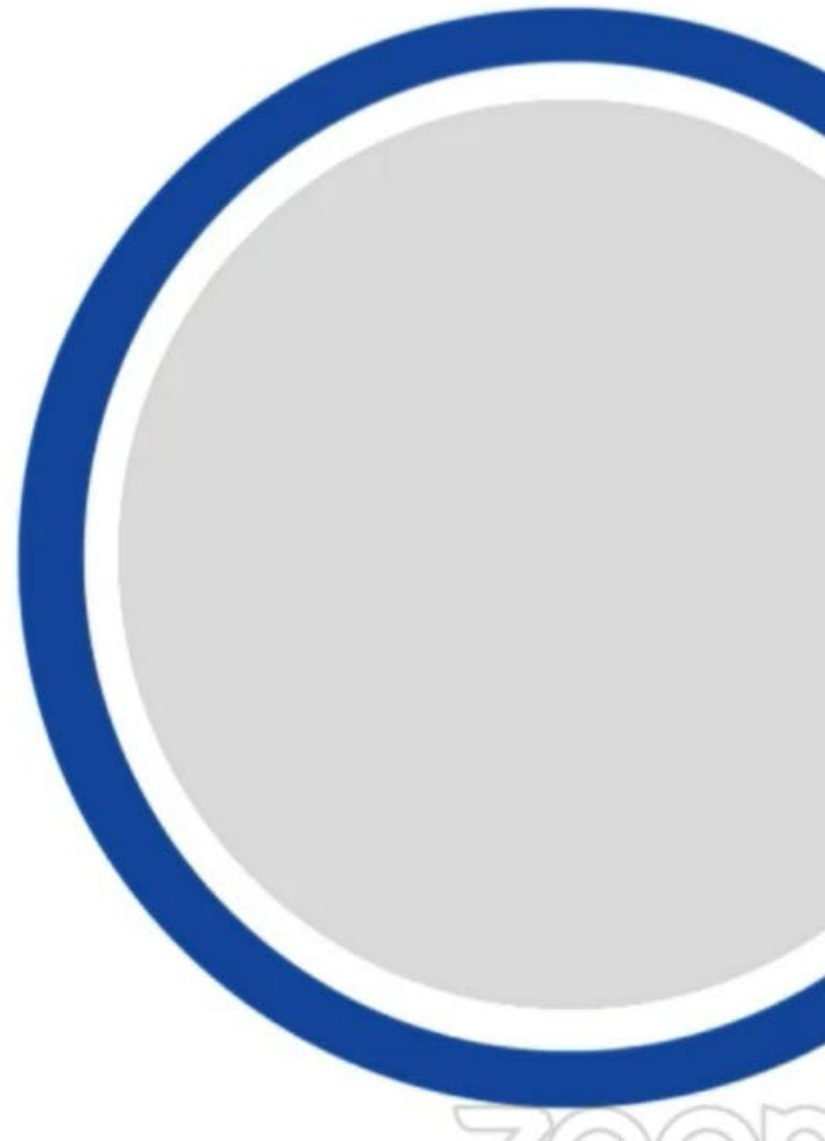
Politecnico di Milano, DMEC

Pierluigi.coppola@polimi.it

Paola Pucci

Politecnico di Milano, DASTu

Paola.pucci@polimi.it



Challenge Area: Creating Public Realm

Regenerate railway stations in MultiService Hubs



Pierluigi Coppola

Aim - upgrading the existing **railways stations** through

- supporting **inter-modality** with **e-shared mobility** and micro-mobility supply, **using the existing electrical infrastructures for public transport** to be exploited also for charging electric shared vehicles;
- enhancing the **quality of the cycle- pedestrian** paths inside and outside the station **through urban experiments** to improving the livability of the internal and external **public spaces** and overcome the barrier effect generated by the railway tracks;
- promoting new services and activities (synthesizable in some formats as '**Market (Service) and Station**', '**Work and Station**', '**Pickup Station**') that participate in the construction of urban opportunities, especially in peri-urban contexts characterized by a marked mono-functionality and low basic services, supporting the needs of the inhabitants, creating spaces for new activities and stimulating innovative attitudes;
- Introducing services and spaces **for co-working, FabLabs and micro-working spaces**, to respond to new demands for services and spaces for at-distance workers and for commuters who live the daily displacement as an 'active' moment of their working day.

Challenge Area: Creating Public Realm

Transforming urban stations in Multiservice Hubs



Pierluigi Coppola

Why

- To improve the **livability and the quality of the public spaces** indoor and outdoor the station, exploiting the availability of underused or decaying spaces in railway buildings;
- To experiment the **accessibility by proximity** concept, in and around the stations for improving the pedestrian access to the main services and urban opportunities;
- To meet new demands for highly accessible **co-working spaces with high public accessibility**, and (following market transformations in the pandemic and post-pandemic period);
- To improve services in favor of commuters and citizens that live near the station, non only related to the mobility needs but also for other services (e.g. **supporting e-commerce** delivery combining parcel pickup in the railway stations).

Challenge Area: Creating Public Realm

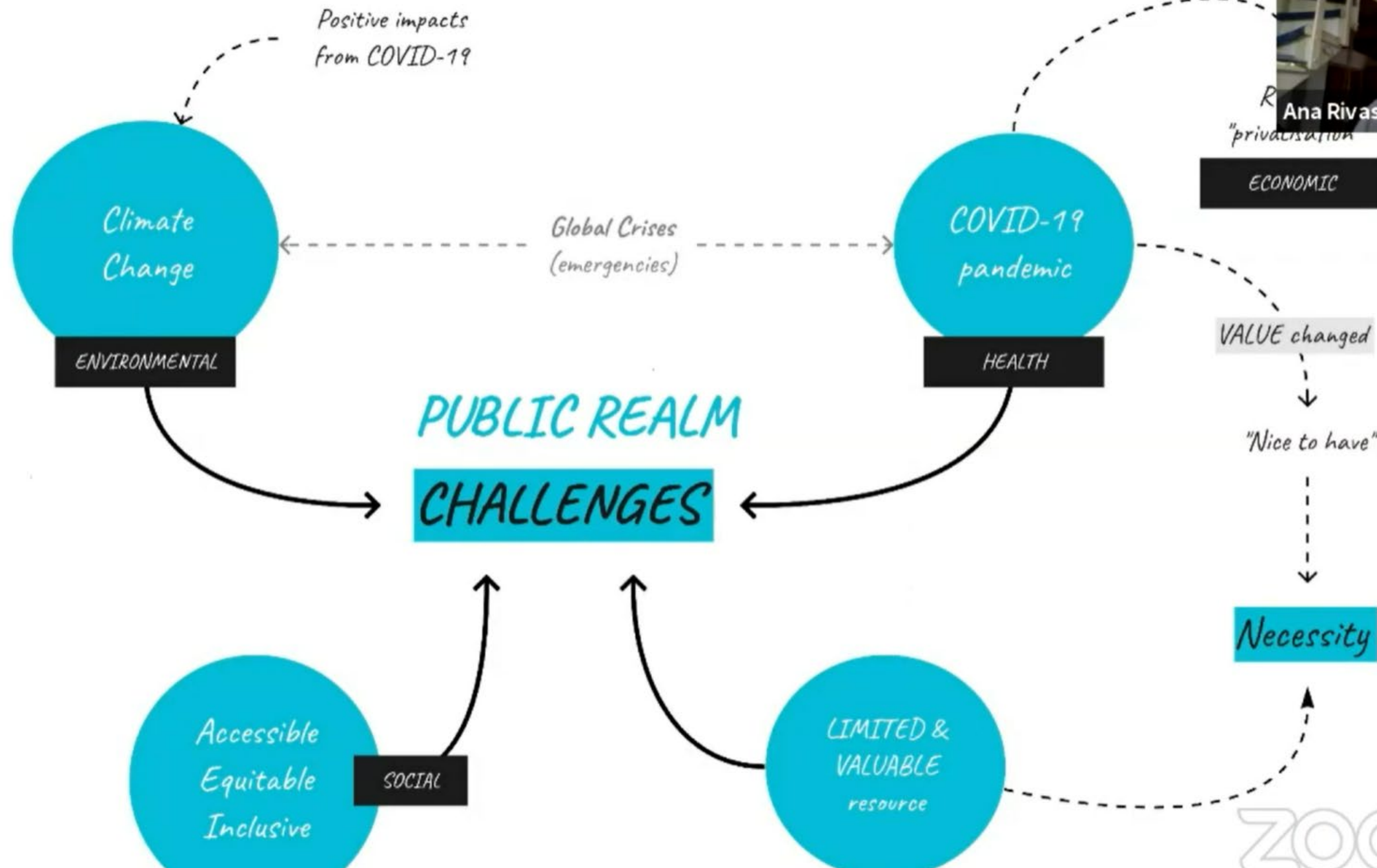
Transforming urban stations in Multiservice Hubs

Pierluigi Copp...



How

- Designing inter-modality facilities and paths (indoor and outdoor the station) including Public Transport, e-shared mobility and micro-mobility supply AND creating infrastructure for energy recharging;
- Improving walking and cycling accessibility in the station districts;
- Making Survey on needs and preferences of citizens and commuters in transforming railway stations in MultiService Hub;
- Classifying railway stations in order to their transformative potentialities in term of spaces, services and connections, based on the their differentiated spatial and transport features;
- Defining combinations of physical design and services in the stations (indoor and outdoor) spaces, based on their classification and the survey outcomes, in order to customize supply, services and the types of usage.





Ana Rivas

Resilient &
Sustainable

Multi-functional & flexible infrastructure, which enhances the **VALUE of (SPACE->PLACE)**

co-created with the community, who is willing to take ownership, in order to ensure a long-lasting intervention that creates more **liveable urban spaces.**

Citizen
Engagement

key in urban planning



Co-City

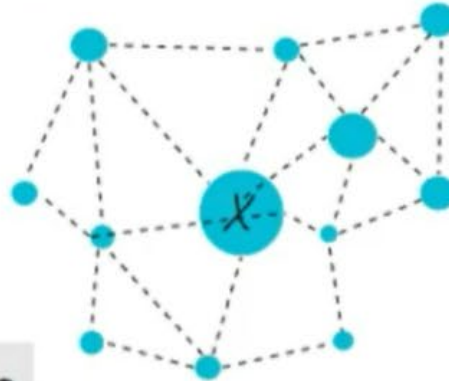
A co-creative urban planning program to redesign, test, evaluate and increase the value of urban spaces.

Ana Rivas



1

COMMUNICATION PLATFORM



2

ACCESSIBILITY ANALYSIS



3

MODULAR URBAN FURNITURE



- Citizens submit a request on a website to reclaim a space (e.g. parklet, plaza, street...)

- Selection of site based on the 15-min-city concept
- By multiple active transport /micro-mobility modes

- Modules that citizens can rearrange not just to the physical space but to other changing circumstances, such as time, weather, season, etc.
- Feeling part of the process and owning the space



EVALUATION

of beneficial impacts

- Social
- Environmental
- Health

zoom

The Challenge

“We can’t fit a bicycle lane here...”



Lior Steinberg



The solution

the
way
to go

Lior Steinberg  Home Tool About Contact

THE WAY TO GO

Redesigning streets. The Dutch way.

WHAT IS YOUR STREET WIDTH?



STREET FEATURES




bike lanes?

Yes 



car parking?

it doesn't matter 




green streets?

Yes 



commercial streets?

it doesn't matter 

GO!



CITY:

Amsterdam

STREET NAME:

Beukenweg

STREET WIDTH [METERS]:

24

EXPLORE STREET VIEW



CITY:

Amsterdam

STREET NAME:

Aalsmeerweg

STREET WIDTH [METERS]:

25

EXPLORE STREET VIEW

zoom

Lior Steinberg



Future plans

- Citizen Participation
- Global examples
- Machine learning
- Opening up

Afternoon pitches:

ORGANISATION	TITLE	SPEAKER	POSITION
WeSolve	WeSolve: citizen engagement for co-creating urban spaces	Simone Leomanni	CEO
University of Lisbon	Citizen Engagement for Suitable Empowerment	Rosário Macário	Professor
Institute for Advanced Architecture of Catalonia	Prototyping Future Cities from Barcelona's Valldaura Labs	Vicente Guallart	Founder, Director & Principal Architect
Systematica	Designing Inclusive Public Spaces Through Innovative Tools and Metrics	Andrea Gorrini	Transport Research Consultant
University of Malta	Networks of Green Open Space in Dense Urban Areas	Sarah Scheiber	Urban Designer / Planner / PhD Researcher / Lecturer
HOPU	IoT & AI to address climate change: Discover all that the air knows about your city	Antonio Jara	CEO
PARK-Cy	New-Age Bike Parking Solution for a Sustainable City	Jeet Banerjee	Founder
ModelMe3D B.V.	Plan the future of mobility and public spaces	Samuel Alvarado	CEO
Dedagroup Public Services	Improve the quality of the Urban Space by setting up a City Data Space	Luca Giovannini	Information Systems Analyst

LIVE 17

WeSolve
BETTER TOGETHER

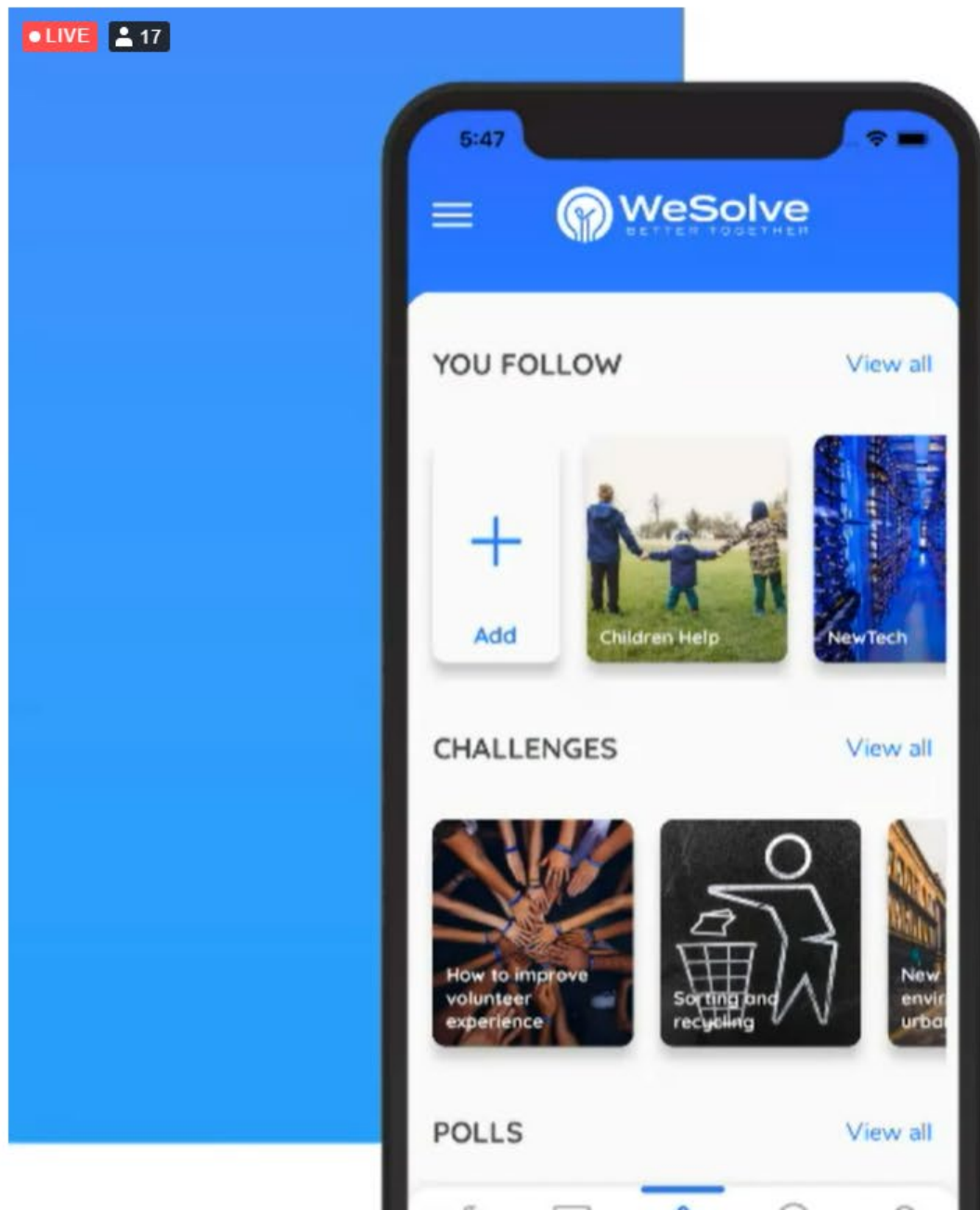
Simone Leom...



WeSolve
BETTER TOGETHER

PRESENTATION

EIT URBAN MOBILITY - CREATING PUBLIC REALM



MOBILE APP



01

CO-SOLVING OF CHALLENGES

02

SHARING OF FEEDBACK

03

ISSUE REPORTING

04

MOTIVATION THROUGH REWARDS

REVENUE MODEL

USAGE-BASED
SAAS SUBSCRIPTIONS



IN-APP ADVERTISEMENT
(REWARD SYSTEM)



PAID ADD-ONS



CONSULTANCY SERVICES



RESULTS

Simone Leom...

01

LAUNCHED IN NOVEMBER 2020

02

30+ ORGANIZATIONS

03

1000+ ACTIVE CITIZENS

04

50+ COMPLETED ACTIVITIES

05

CO-FINANCED BY INNOVATION FUND
DENMARK

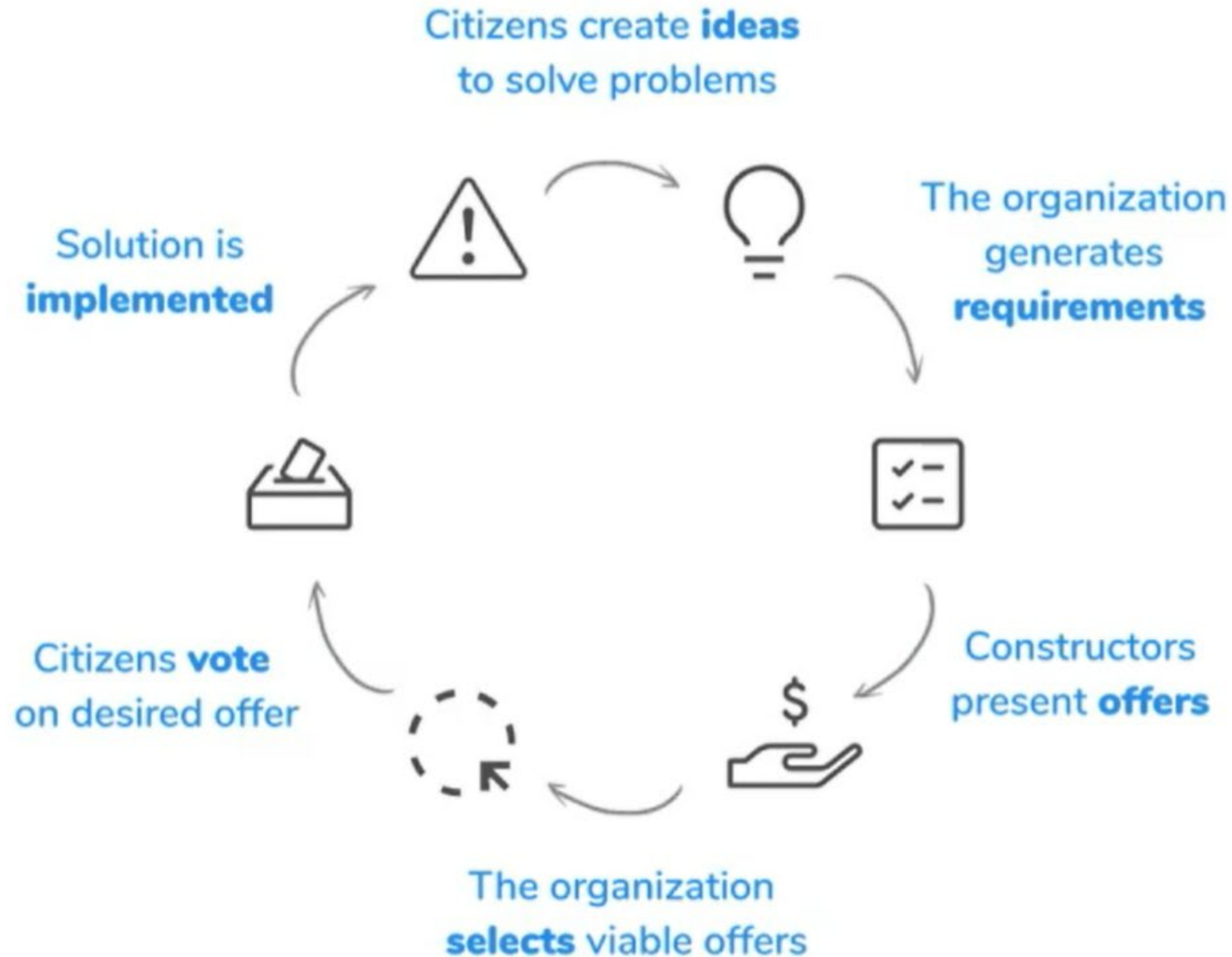
06

MEMBER OF DISIE, BLOXHUB AND
URBAN TECH



IDEAS-SOLUTION MATCHMAKING

Simone Leom.



Citizen Engagement for Suitable Empowerment CENSE

Boost the uptake of citizen engagement activities and enhance EIT-UM outreach

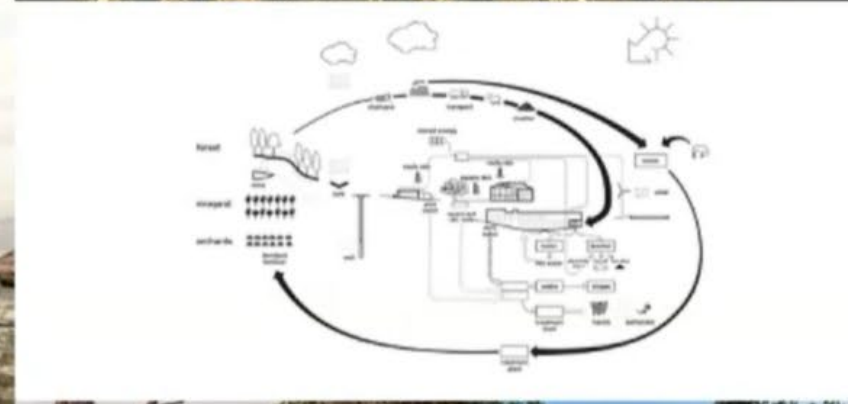
Re-think urban public space by considering competing demands and citizen engagement

Added value of CENSE

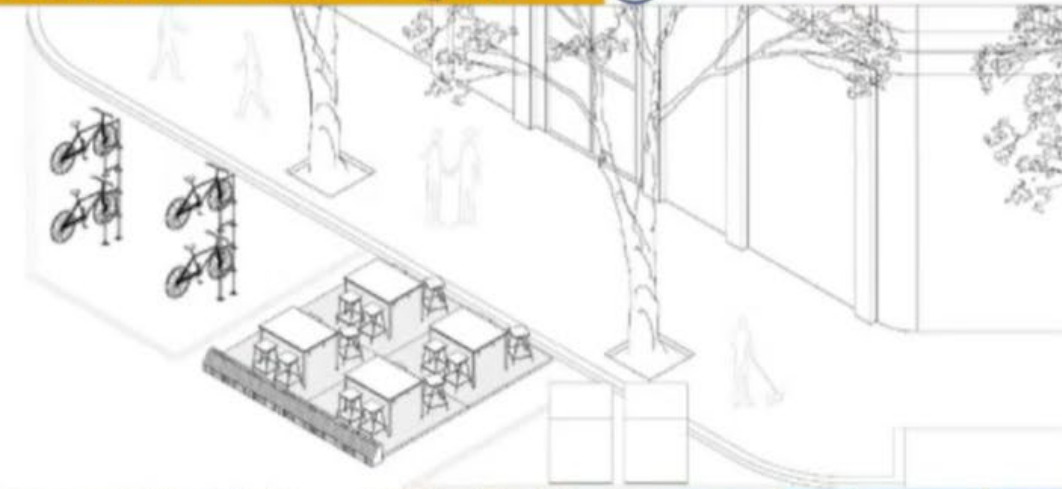
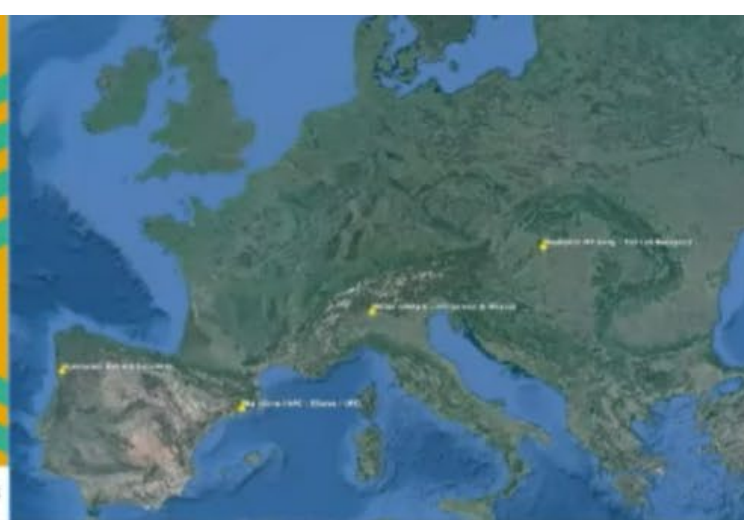
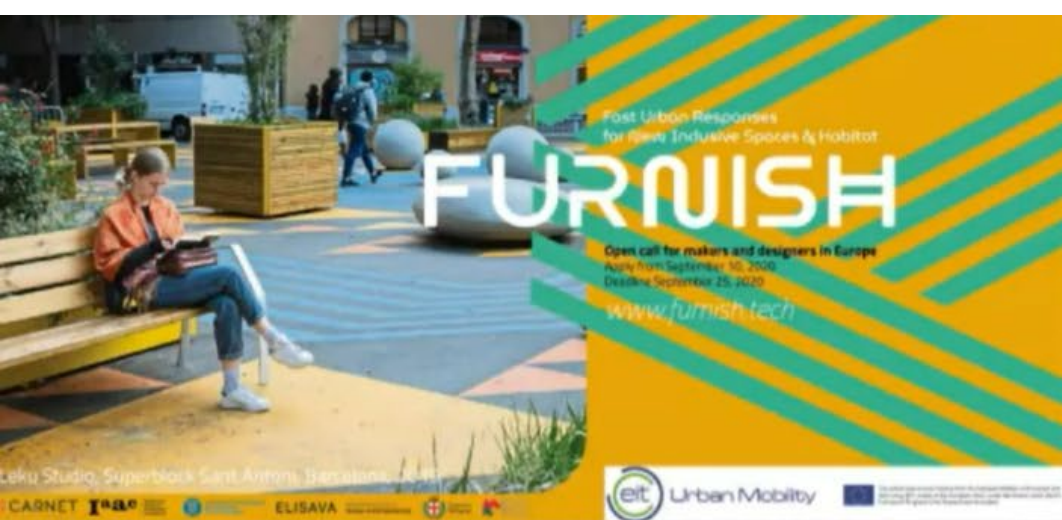


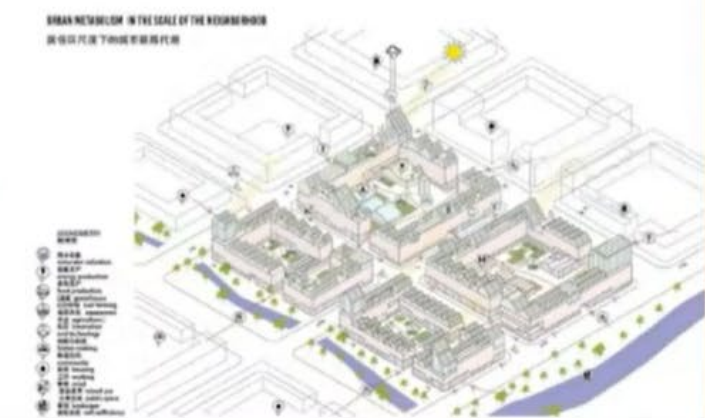
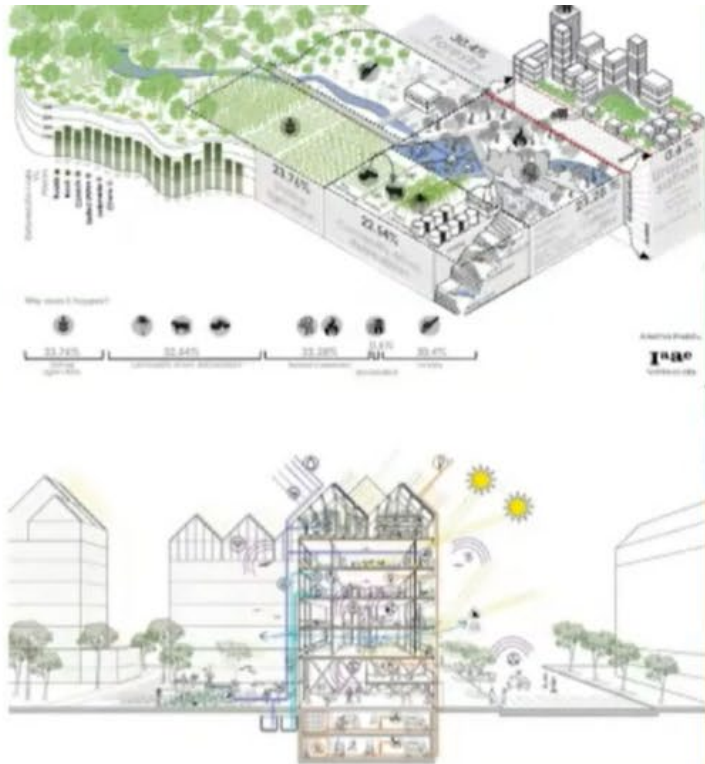
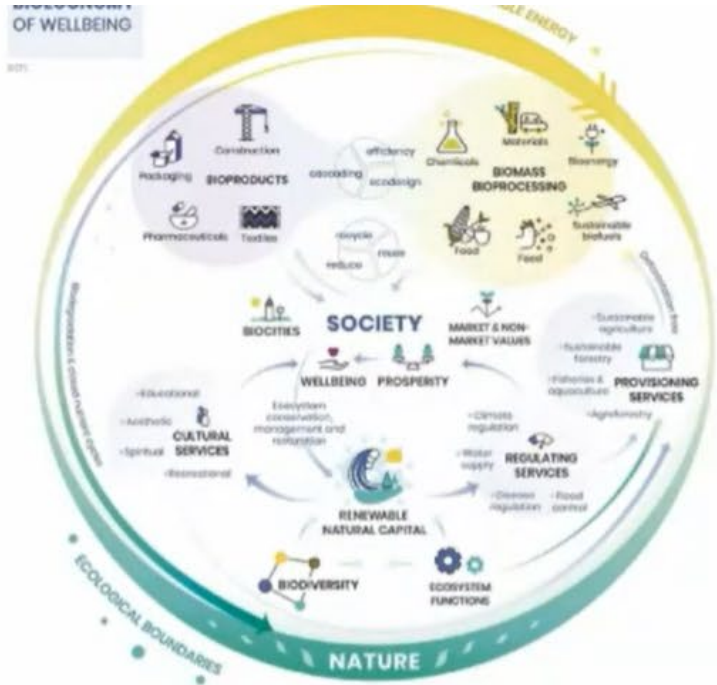
- Engagement of citizens in planning and decision processes is a fundamental asset to accelerate the speed of change of behaviors towards greater impact in urban sustainability.
- Citizens' participation involves the connection with the citizens through information and awareness processes.
- Citizens' engagement goes far beyond by creating a relationship of trust and co-creating the solution
- CENSE' three pillars:
 - connecting, by raising awareness and developing capabilities;
 - exchange, build in technological development tools that will facilitate interaction with citizens capturing their perceptions on the urban mobility systems;
 - empowering, by opening co-creation processes to answer existing problems, and enabling the citizens to understand their degree of accountability regarding the sustainability of urban spaces.





Introducing Valldaura Labs





Vicente Guala...

Investing in Nature as the true engine of our economy

A 10-point Action Plan for a Circular Bioeconomy of Wellbeing

Marc Palehi, Mari Pansar, Robert Costanza, Ida Kubiszewski, Janez Potocnik, Martin Stuchtey, Robert Nasi, Hunter Lovins, Enrico Giovannini, Lorenzo Fioramonti, Sandrine Duxson-Declercq, Jacqueline McDiade, Kate Pickett, Richard Wilkinson, Jennifer Holmgren, Katherine Traback, Stewart Wallis, Michael Ramage, Göran Berndes, Fesus Akinnifesi, Kristin Vals Ragnarsdóttir, Bart Muya, Georgy Saloniou, Antonio Nobre, Carlos Nobre, Daniel Ibarra, Anders Wikman, Jason Snape, Luc Bes

Foreword by
**His Royal Highness
The Prince of Wales**

**KNOWLEDGE
TO ACTION**

Iaazoom
Institute for advanced architecture of Catalonia
IAAC Valldaura Labs

April 1, 2021

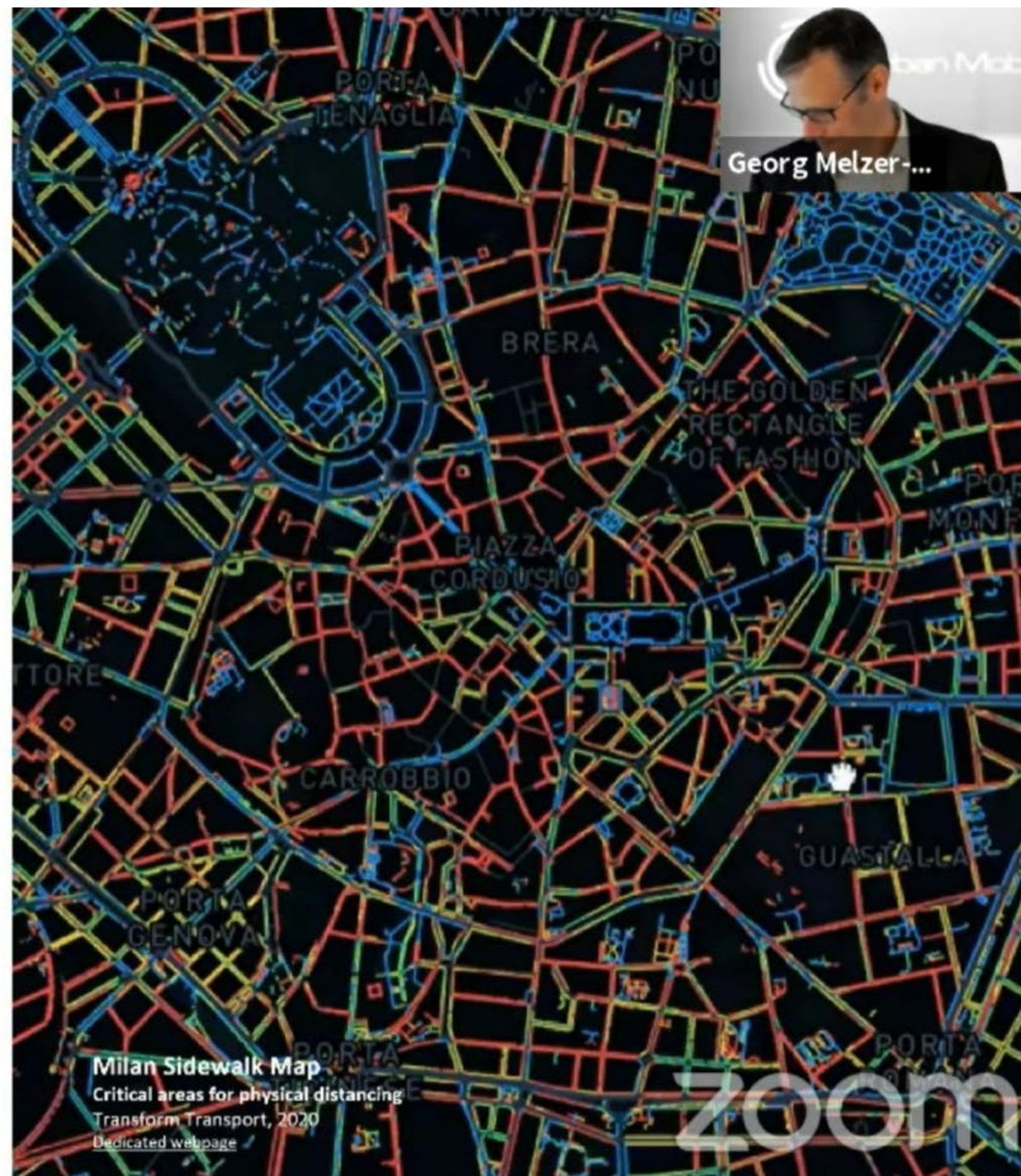
Creating Public Realm

Designing Inclusive Public Spaces Through Innovative Tools and Metrics

EIT Urban Mobility - Call for Proposals BP2022
Matchmaking Event Series and Information sessions

Systematica Srl
Transport Planning and
Mobility Engineering

T + 39 02 62 31 19 1
E milano@systematica.net
www.systematica.net





Shaping Ageing Cities

Walkability for the elderly

Arup, HelpAge, Intel, Systematica, 2015

[Dedicated webpage](#)



Living Local

Mapping Milan micro-centers

Transform Transport, 2020

[Dedicated webpage](#)



Piazze Aperte in Ogni Quartiere

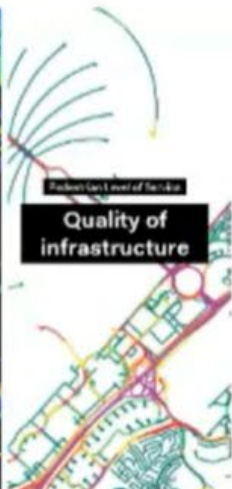
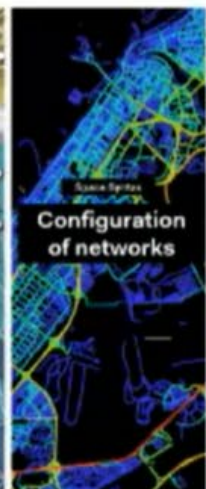
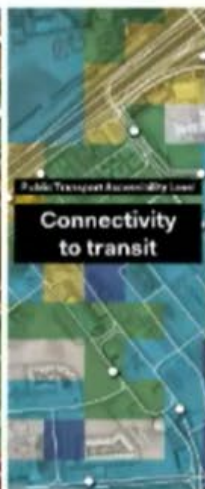
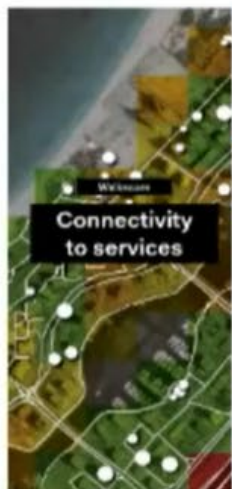
Regeneration project Piazza Tito Minniti

Systematica, 2019

[Dedicated webpage](#)



Andrea Gorri...



Dubai Street Atlas

Walkable cities of tomorrow

Transform Transport, 2019

[Dedicated webpage](#)



Looking with Machine Eyes

Computer vision for monitoring mobility data

Transform Transport, 2020

[Dedicated webpage](#)



Wi-Fi Sensors Data

The evolution of the lockdown phases in Milan

Transform Transport, 2020

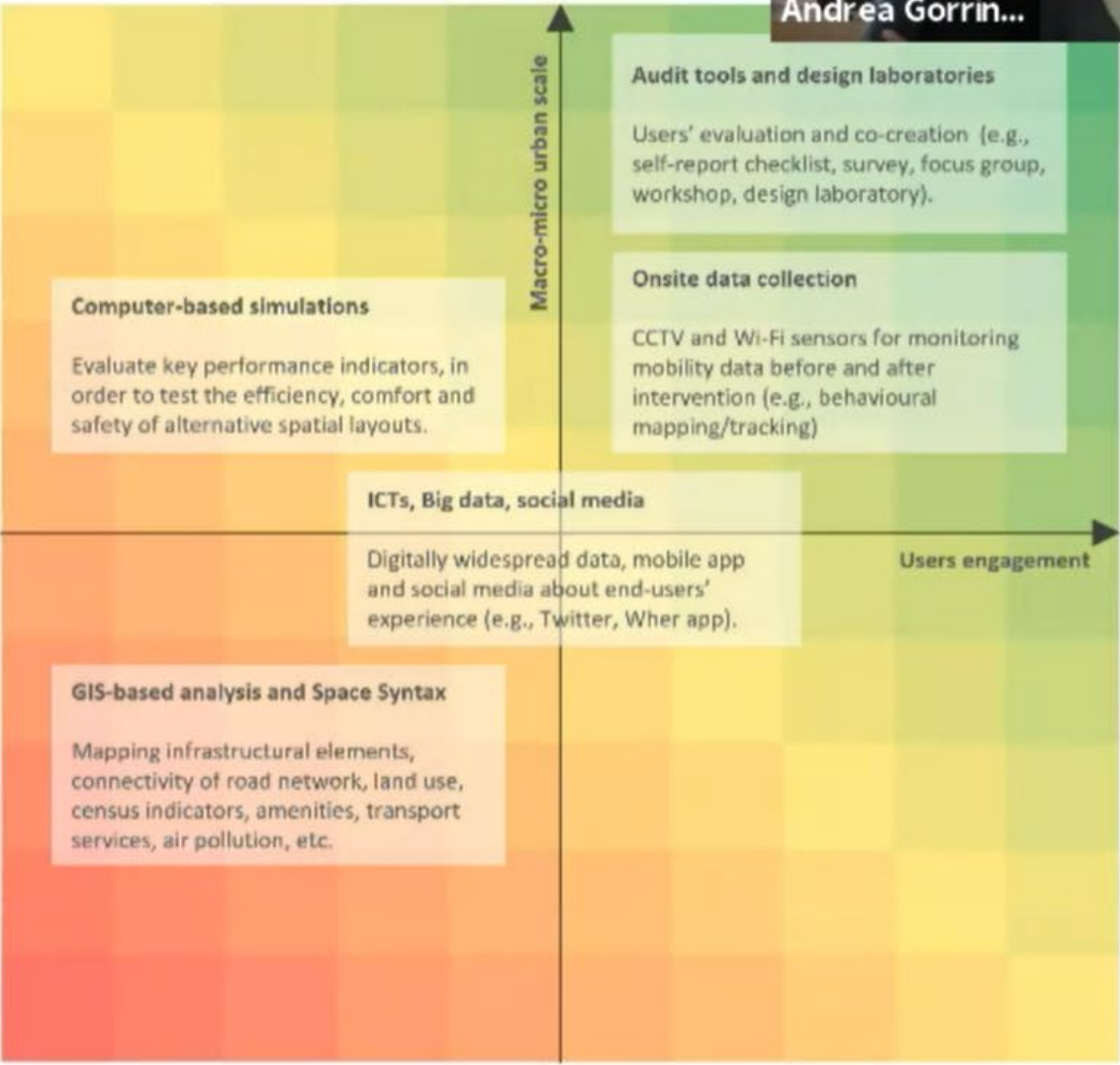
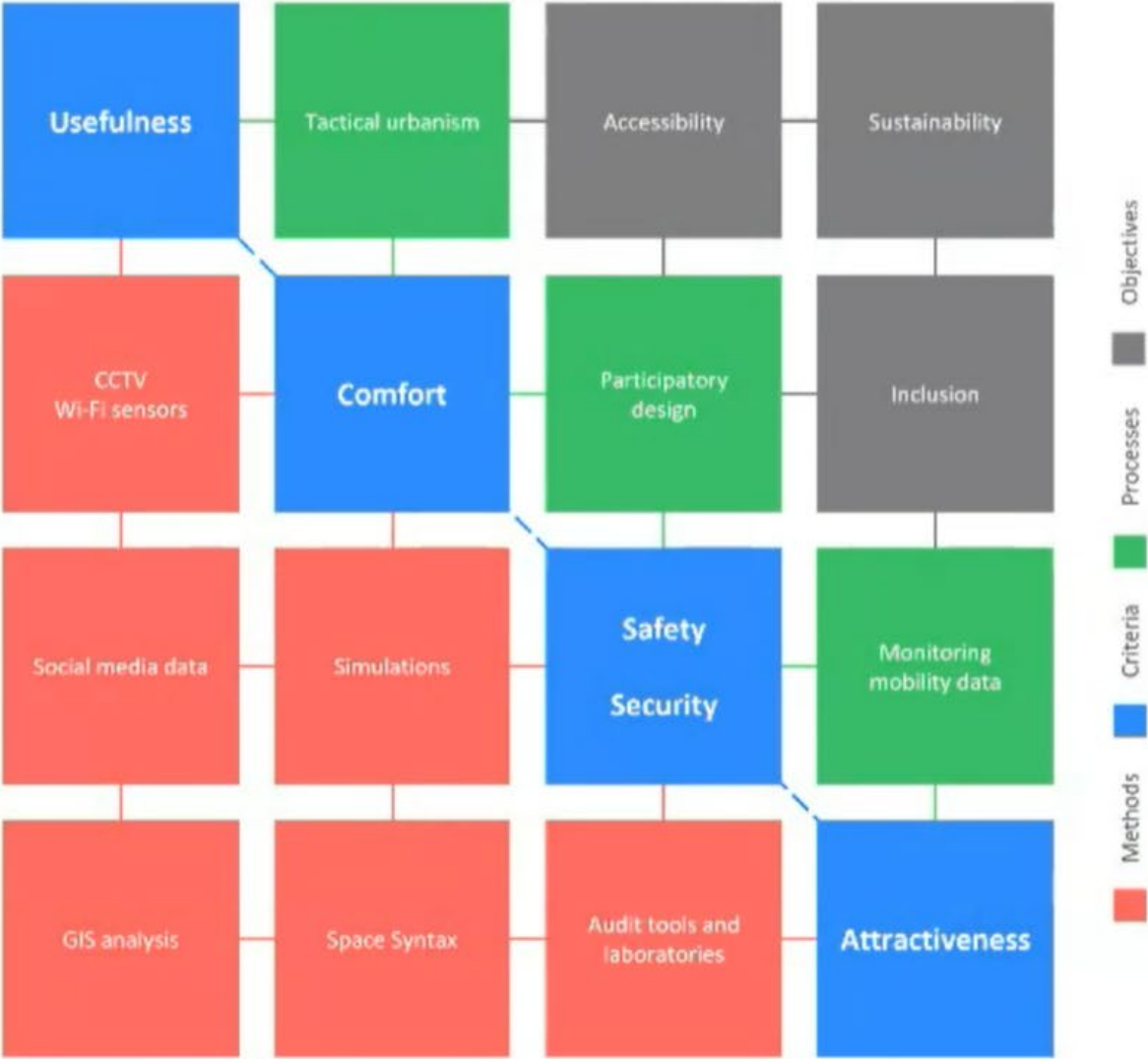
[Dedicated webpage](#)

Creating Public Realm

Design of Inclusive Public Space Through Innovative Tools and Metrics



Andrea Gorrin...





WHO ARE WE WHAT DO WE BRING

University of Malta
+
City Partner
+
RIS Country

Looking for:

A Core Partner
With Similar Interests



WHO DO WE DO

Studying Poor Quality Open Spaces

Car-oriented public realm
+
Dense urban fabrics
+
High population densities
+
Disconnected spaces
=
Lack of recreational
green open space
within urban areas



Sarah SCHEIB...



WHO DO WE DO

Exploring ways to develop Green Open
Space Networks in Dense Urban Areas

+

Introducing an Urban Green
Infrastructure Planning Approach

+

Creating Recreational
Space within Walking Distance

+

People Oriented Public Realm

=

Maximising Social, Environmental &
Economical Value



HOW?

Urban Living Lab

Participatory Action Research

+

Piloting of Policies /
Tactical Urbanism

+

Participatory Workshops

+

Knowledge Transfer

=

To Inform Planning
Processes in Malta

+

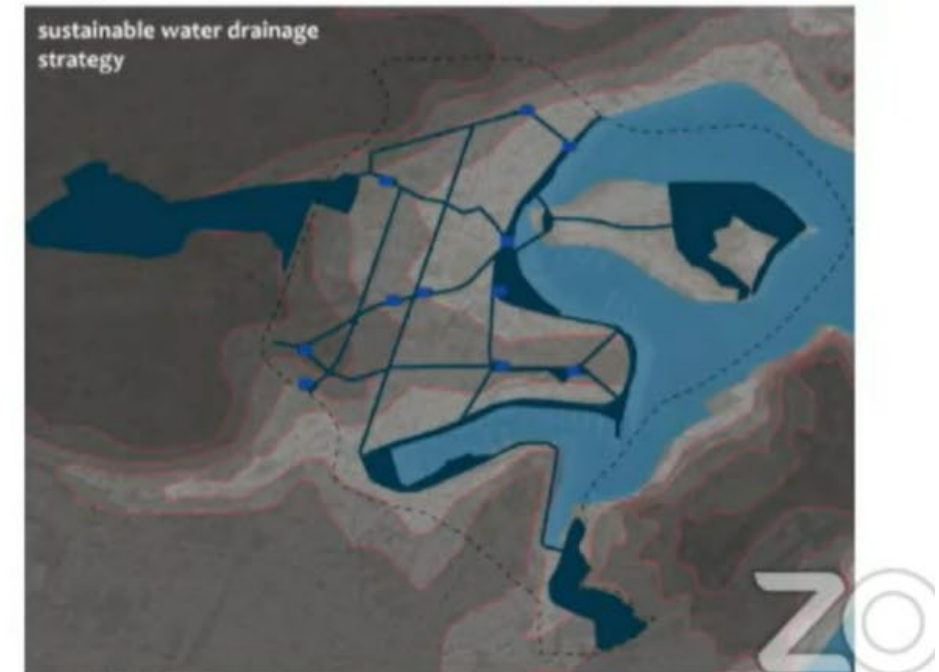
Drive Transformation of the
Public Realm



WE OFFER

Expertise related to:

- spatial planning & urban design
- urban green infrastructure planning & design
- community engagement & outreach



Conceptual Strategies (PhD Research, Scheiber, 2021)

Sarah Schreiber
Research Academic
Faculty for the Built Environment
University of Malta

sarah.anastasi@um.edu.mt

Urban Living Lab

Green Open Space Networks within
Dense Urban Areas



**L-Università
ta' Malta**



Evidence-based action plans to mitigate climate change



Dr. Antonio Jara
CEO
www.hopu.org



**MAKING
EASY**
& assisting
decision-making



IoT Sensors



Other data
sources
integrat



*All Smart Spot extensions can be integrated in **one device***



DEVICES INTEGRATION & MANAGEMENT

Other Platforms

MQTT, OMA LwM2M, HTTP, SentiIo...



INDICATORS & DATA VISUALIZATION

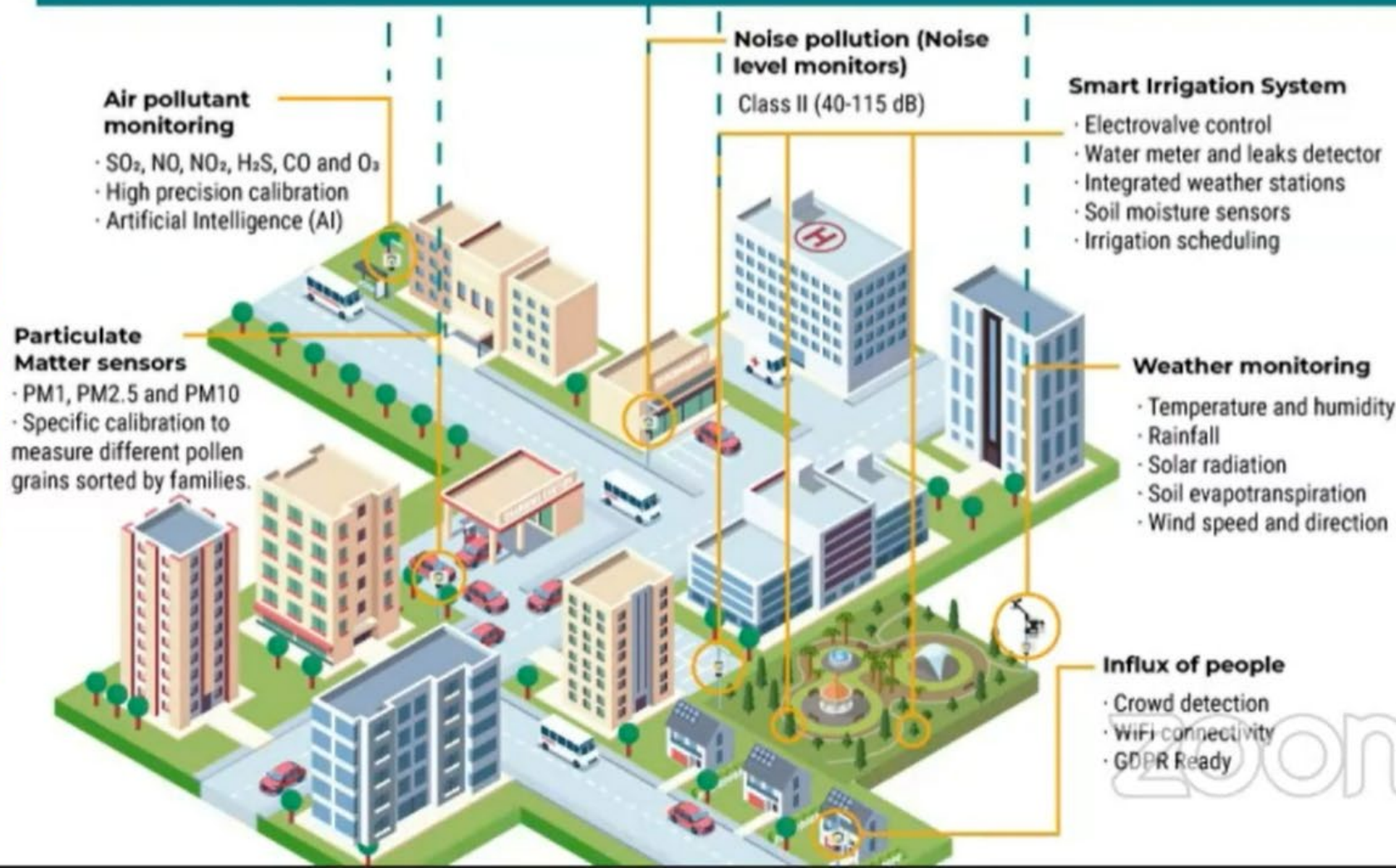


Real-time data

Antonio Jara (...)

Indicators
Intuitive interface

Agile evaluation of environmental parameters by different user profiles





THANK YOU!

**Dr. Antonio
Jara**

CEO & Founder

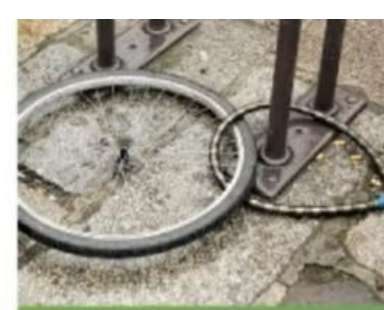
Email: jara@hopu.eu

Phone: +34 627 228
126



zoom

P PARK-CY



P
Jeet Banerjee

BIKE THEFTS

In 2019, the sum of insurance claims for wheel thefts was 100 million euros.



UNORGANIZED PARKING



zoom

COMING

SOON!

To your City..!!



IOT Based Solution
with the APP Platform
for User interaction



Jeet Banerjee

& digital platform
for Users



Option for Air Pump

Option for E-Bike
Charging

Anti-Theft Features

- Alarms
- Surveillance
- Monitoring

Update and
Install new
technologies to
existing parking
Rack Designs

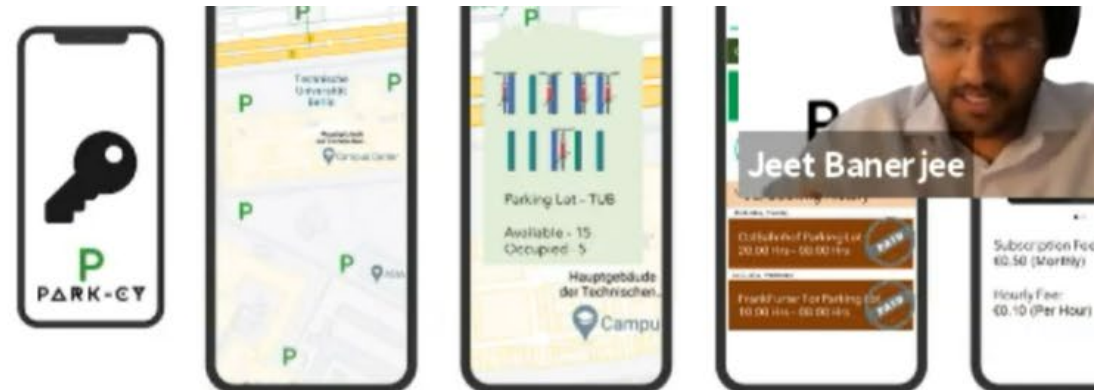


34% in a survey
of 596 Cyclists
feel incentivized
to use bikes if
there is a
secured parking
facility





Innovative Business Model



Prospects and Market Size

- Scalable Business in Urban Cities focusing Sustainable Modal Choice as Bicycles.
- Gross Margins of 35% from Year 3 onwards
- Capable of a Million Euro Valuation while helping the Cyclists live a stress free life.



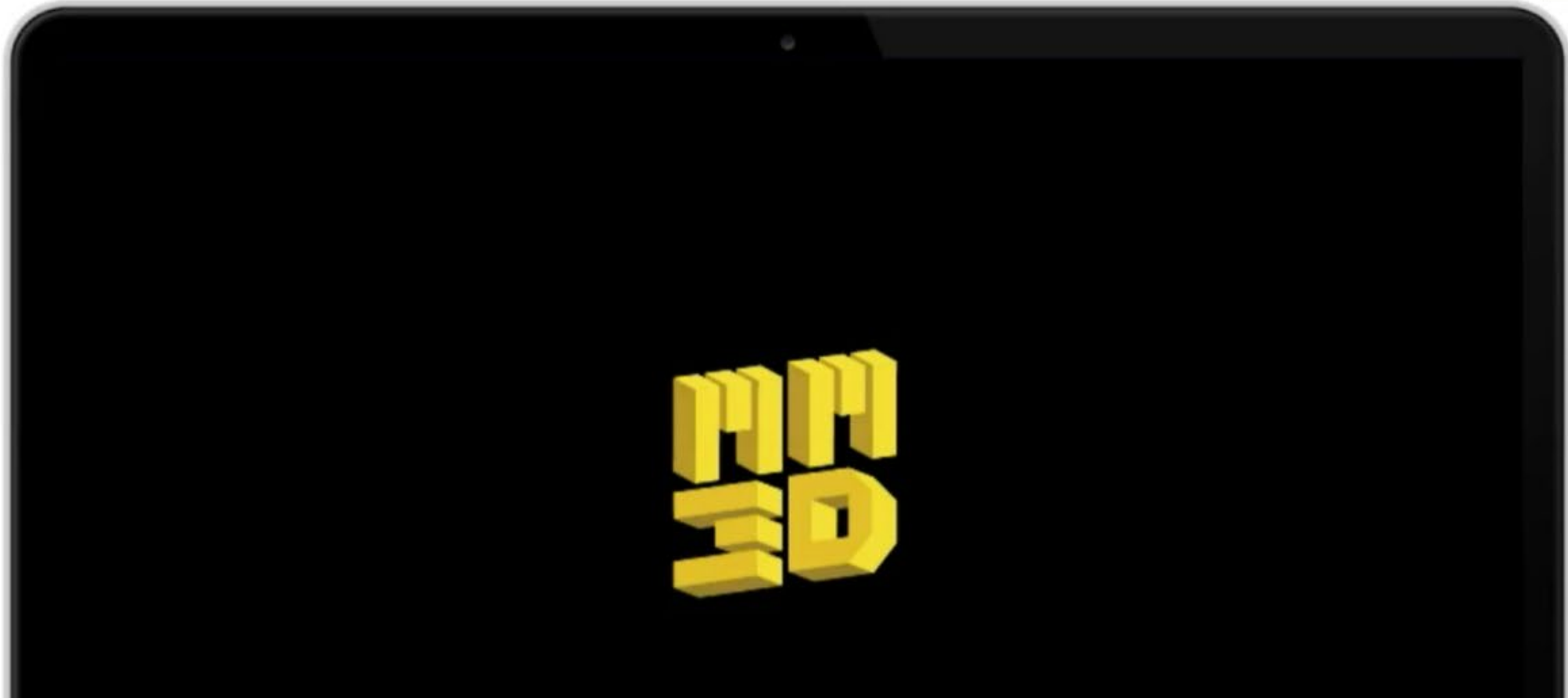


3D

zoom

Digital twin for city design with citizens

Co-Creation Design Tool!





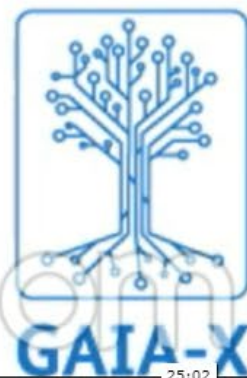
"If you cannot measure it, you cannot improve it..."

William Thomson, Lord Kelvin

Luca Giovanni...

Improve the **quality** of the **Urban Space** by setting up a **City Data Space**

- to collect updated **data** about the city
 - points of interests: amenities, shops, services...
 - infrastructures: sidewalks, bike lanes, parking areas...
 - ...
- identify **issues**
- plan corrective **actions**
- while having its maintenance **costs** covered!



Case 3: Public Transport operators



Luca Giovanni...

Actividades Culturales y de Ocio Municipal en los próximos 100 días

título Concierto Año Nuevo

gratuito si

del 03/01/2021

al 03/01/2021

descripción CORO DE VOCES GRAVES Dirección artística: Juan Pablo de Juan. Una de las agrupaciones corales españolas más reconocidas por la crítica y aplaudidas por el público. Se han cumplido 20 años desde que un grupo de dieciséis jóvenes cantantes decidieran embarcarse en el proyecto de investigación, estudio y recuperación del repertorio creado para voces masculinas; una música de escasa presencia en nuestro país y casi nula fuera del norte de España. Será obligatorio el uso de mascarilla y gel hidroalcohólico en la entrada así como atender en todo momento a las indicaciones del personal para cumplir las medidas preventivas dictadas por las autoridades sanitarias. AFORO MÁXIMO LIMITADO HASTA COMPLETAR EL MISMO.

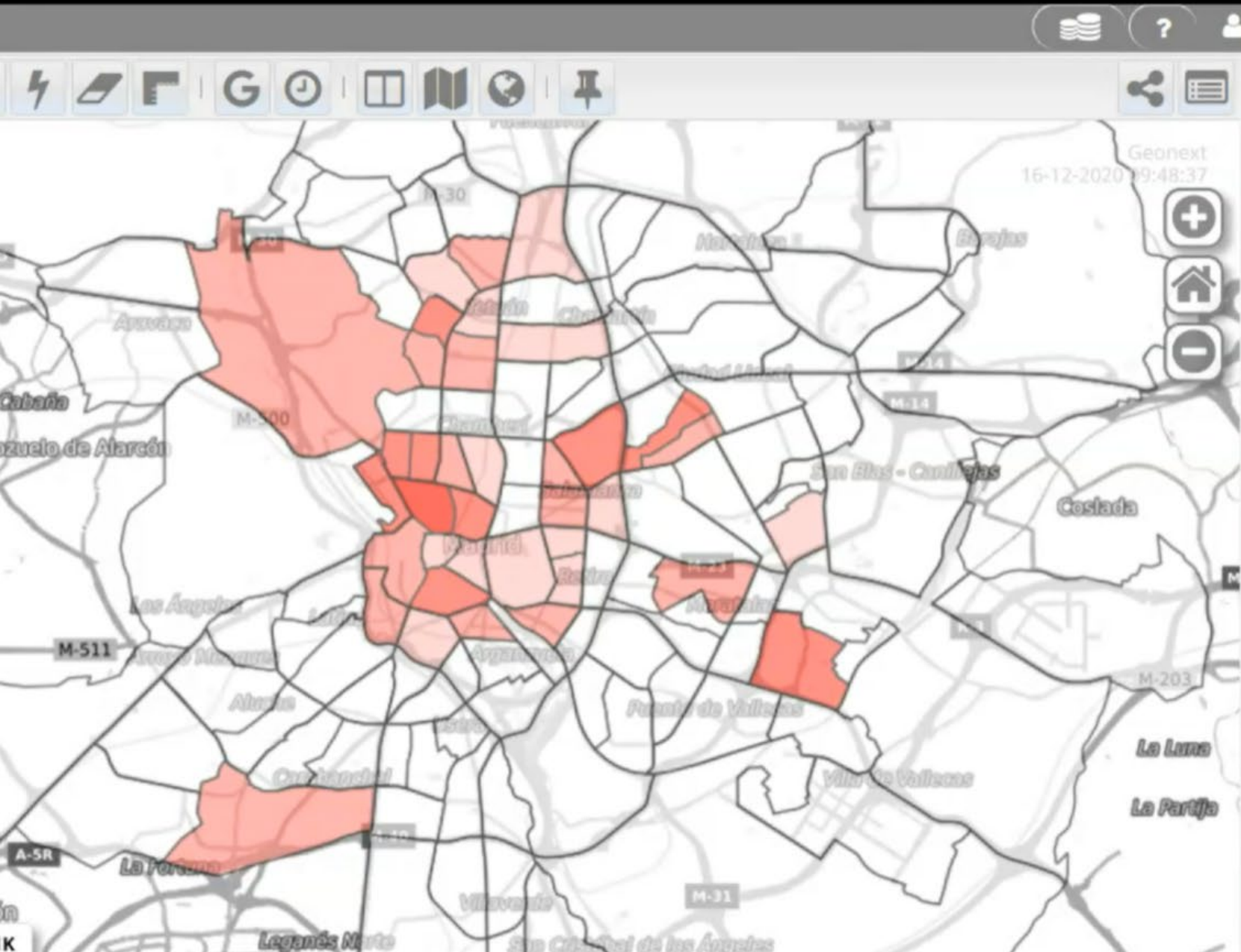
sitio Parroquia San Pío X

dirección CALLE DOCTOR CASAL 9

distrito MONCLOA-ARAVACA

barrio CASA DE CAMPO

Case 4: Public Realm Planning



- implement measures that make it possible to satisfy the **daily needs of the population**, at the neighbourhood level
- define **indicators of accessibility** to basic urban services
- measure the degree of **compactness** with respect to accessibility