

Machine Vision for Smart Intersections



Aalto University
School of Engineering

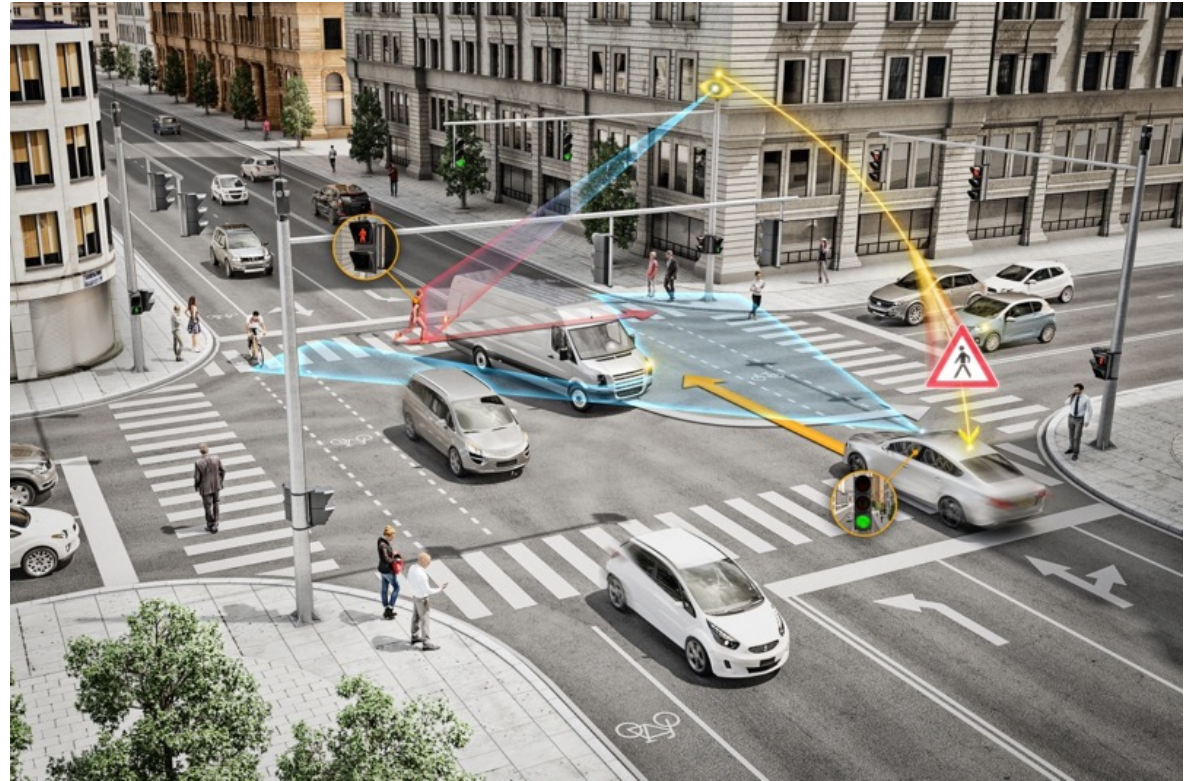
Risto Ojala

Risto.j.ojala@aalto.fi

08.04.2021

Why Traffic Intersections?

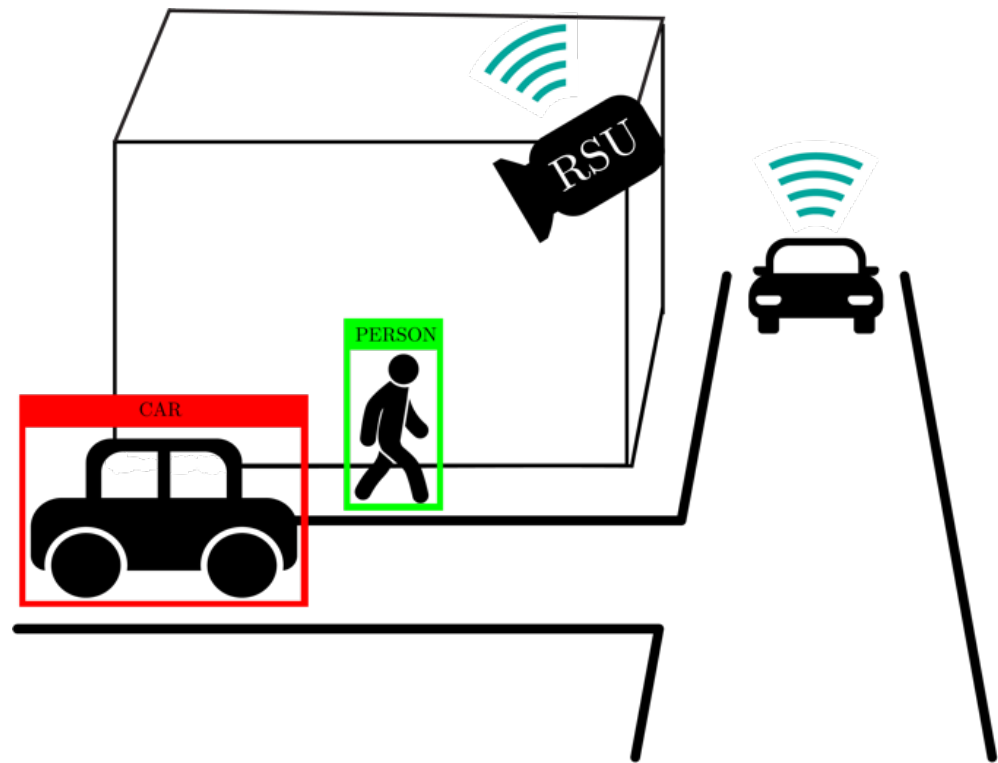
- Intersections are problem areas in road networks
- 20 % of traffic fatalities occur in intersections/junctions in EU and US
- Connected vehicle technology provides solutions



Picture: <https://www.smartcitiesworld.net/AcuCustom/Sitenam/DAM/011/news-transport-dec17-continentyinter.jpg>

Developed Safety System

- Occluded road users are a safety hazard in intersections
- Machine vision roadside unit (RSU) localises road users, sends positions to connected vehicles
- Vehicle can alert driver of possible collisions

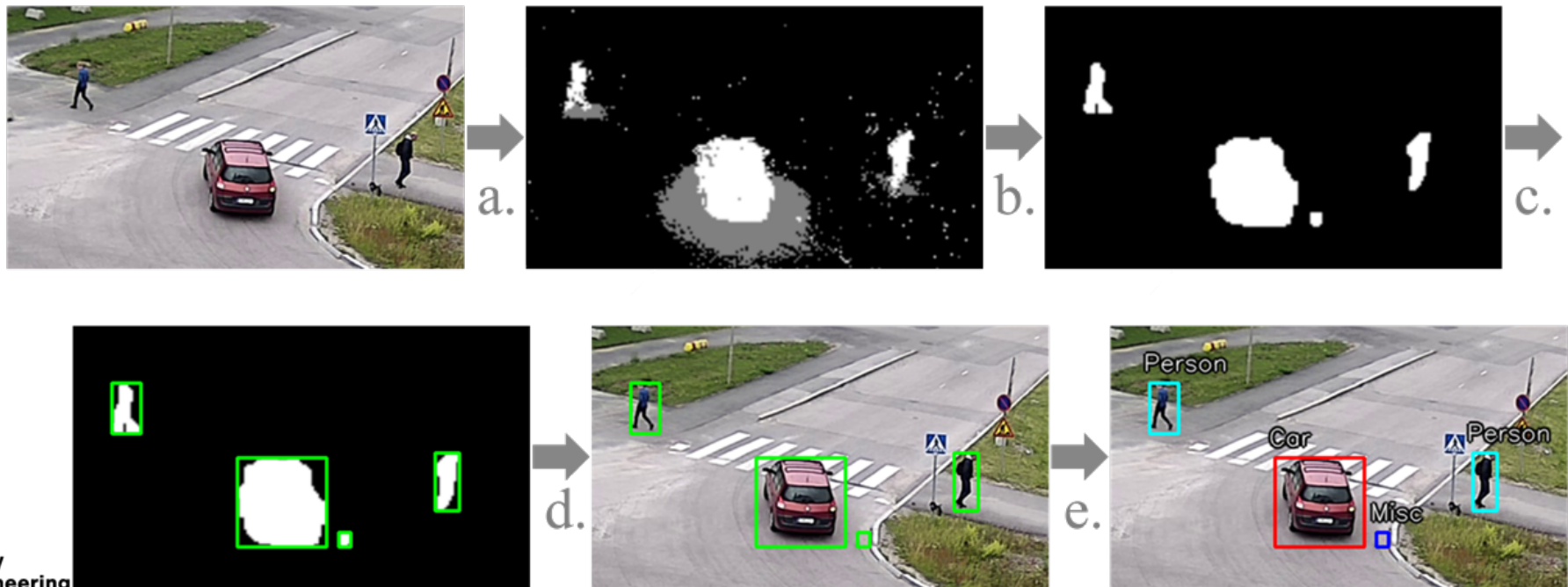


Research Environment



On-going Work: Detection

- Motion Detection and Classification (MoDeCla) for road user detection



MoDeCla

YOLOv3

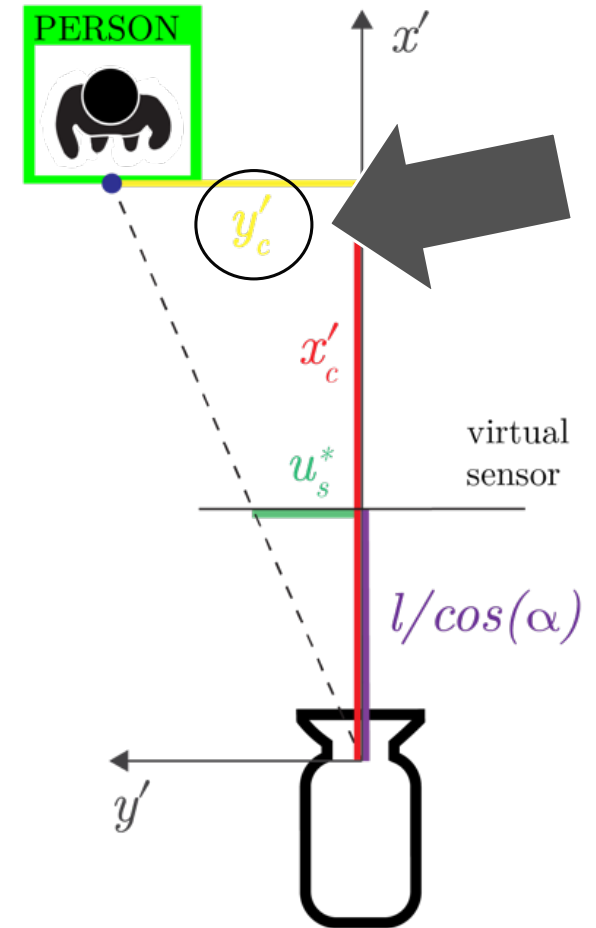
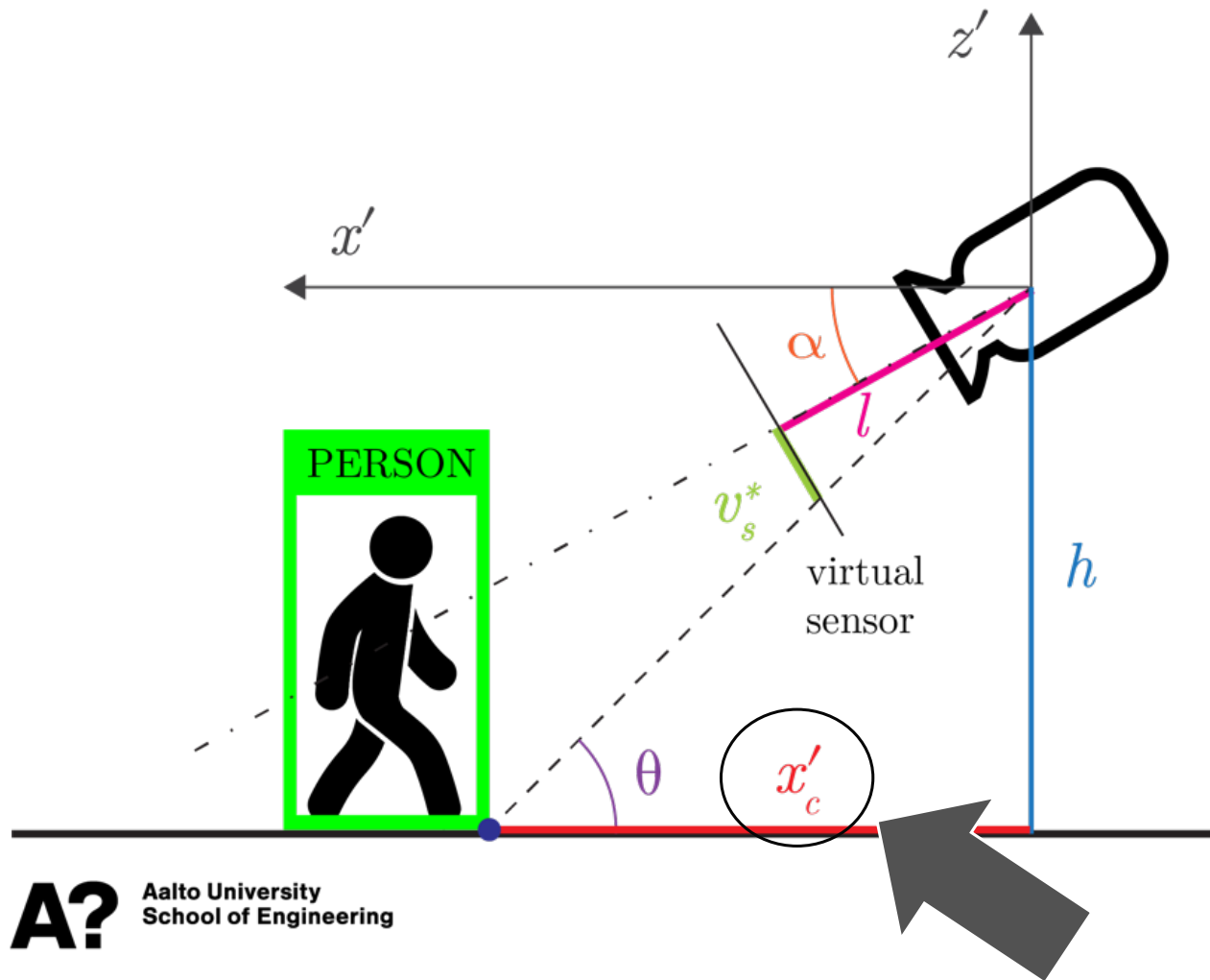
On-going Work: Detection

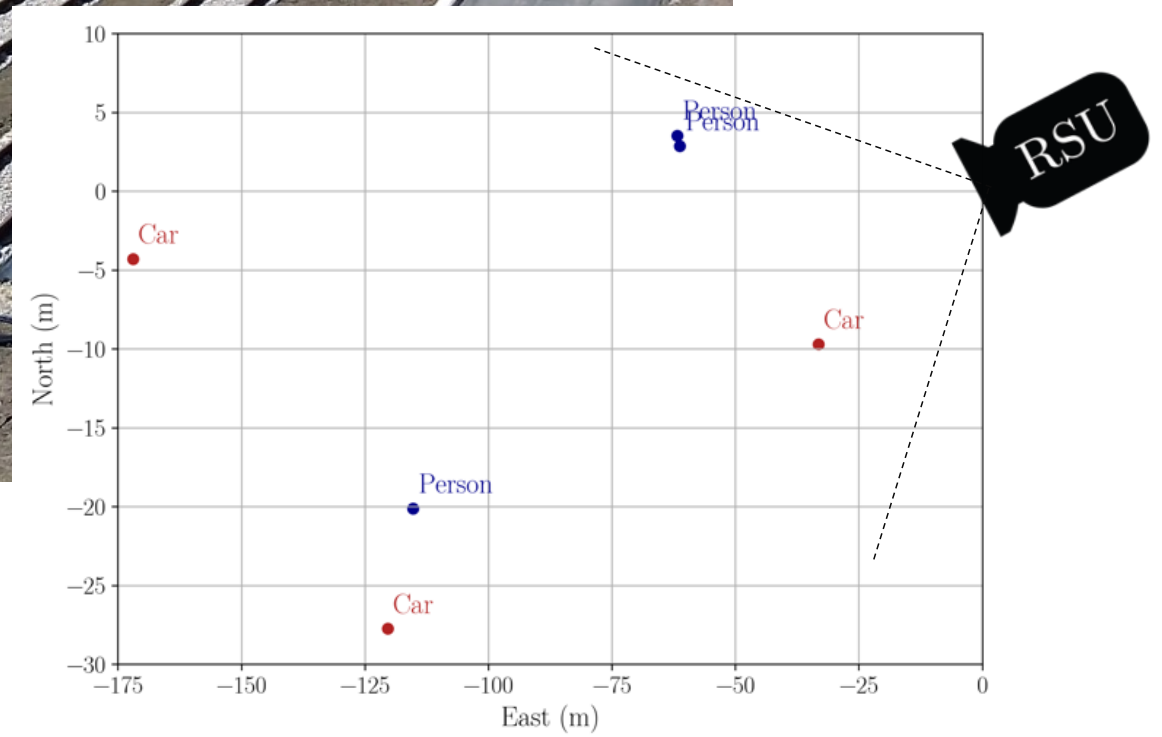
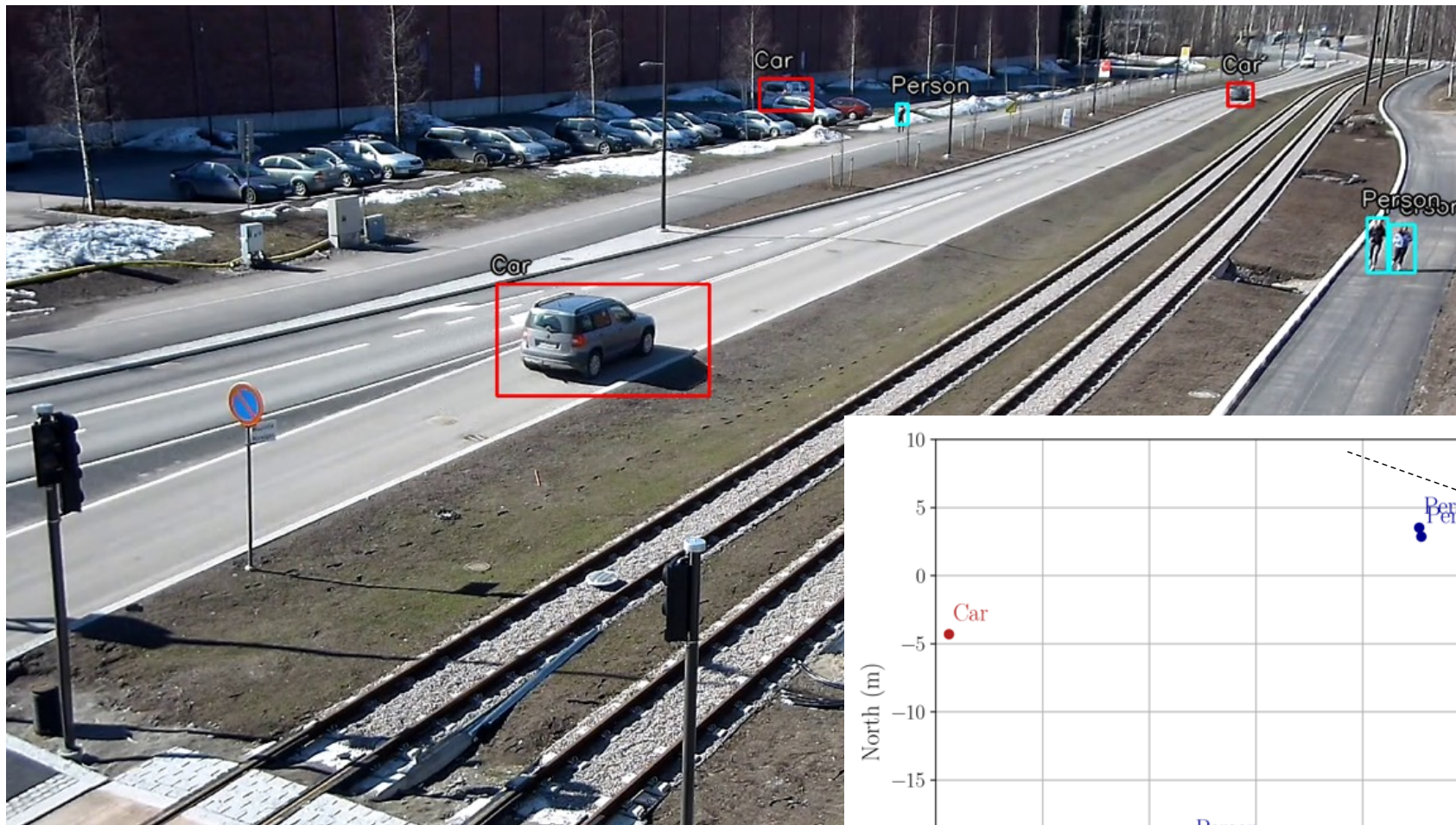
YOLOv3 @ 30 fps (1-2 k€)

MoDeCla @ 30 fps (~100 €)



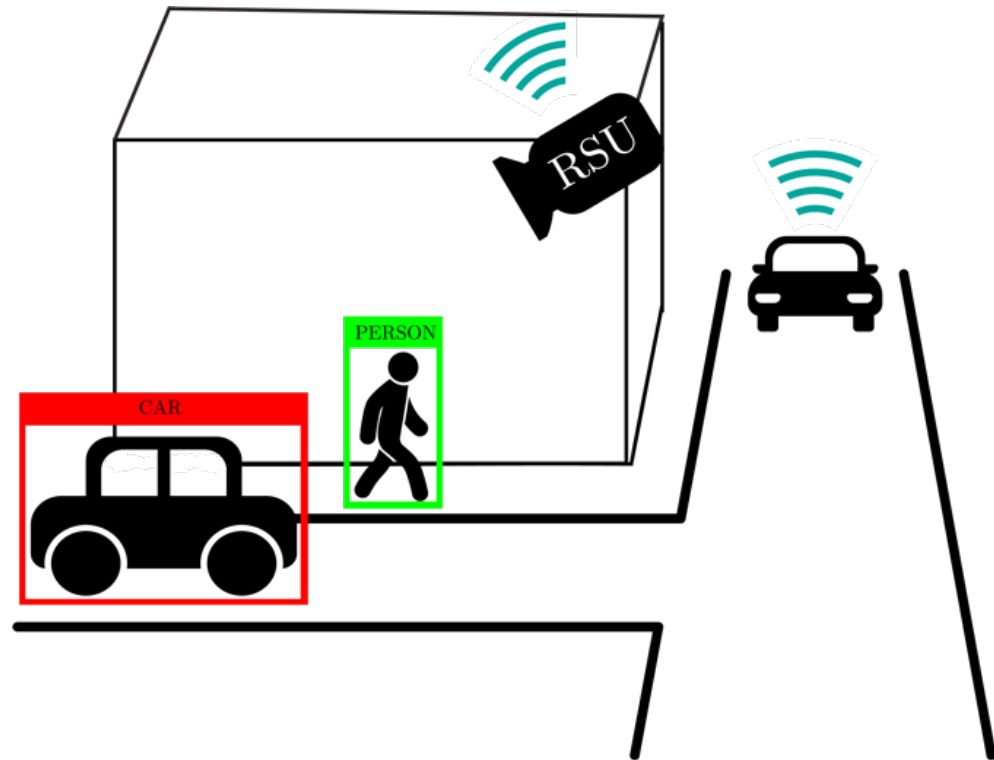
On-going Work: Localisation





Conclusion

- Machine vision roadside units for safety in smart intersections
- Detection and localisation have to be designed accurate, fast, and cheap for adoption of the system



Thank you! Questions?