

Aalto University

—
shaping the future

Janne Laine, Vice President for
Innovation



Aalto-yliopisto
Aalto-universitetet
Aalto University



Origins

Aalto was established as a private, foundation-based University with the national mission of **strengthening Finland's innovative capability** through research, arts and education.



Aalto University innovation ecosystem

Focus Areas:

*Multi-disciplinary
research fostering
innovation and
entrepreneurship*

*Entrepreneurship as a
cross-cutting theme*

*Otaniemi Campus as an
Innovation Hub*

A" Aalto University



Aalto University
Design Factory

**AALTO
VENTURES
PROGRAM**

A? Aalto University
EIT Services

Aaltoes

Startup Sauna



UWAS
University Wide Art Studies

AEE
Aalto University
Executive Education



Multi-disciplinary research fostering innovation and entrepreneurship

We are committed to identifying and solving grand societal challenges and building an innovative future through our seven key research areas.

Multidisciplinary research platforms

Aalto University

Energy Platform

Digi Platform

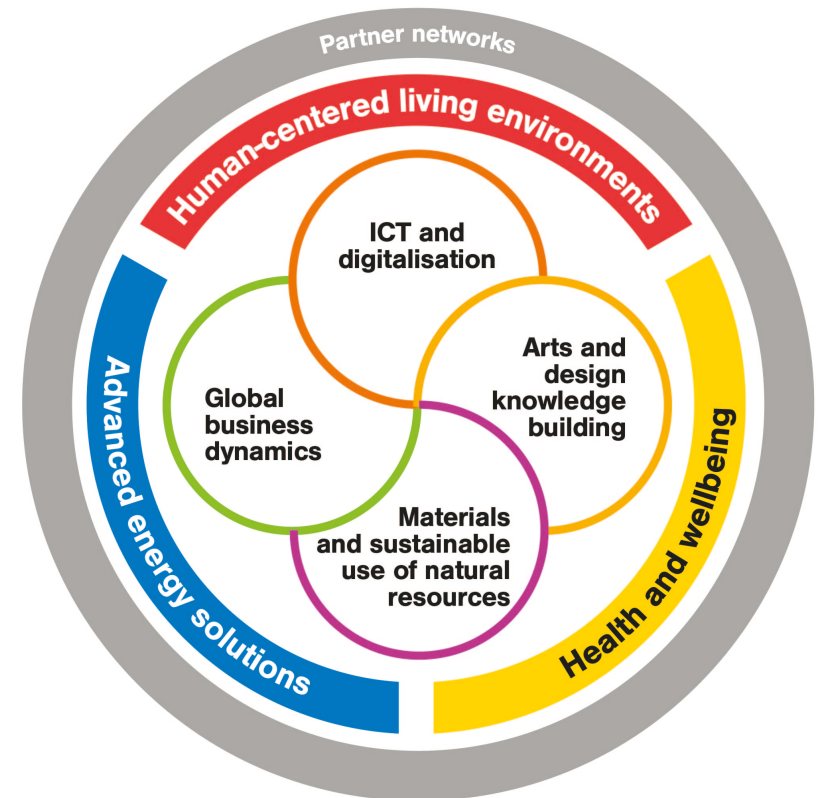
Living+ Platform

Health Platform

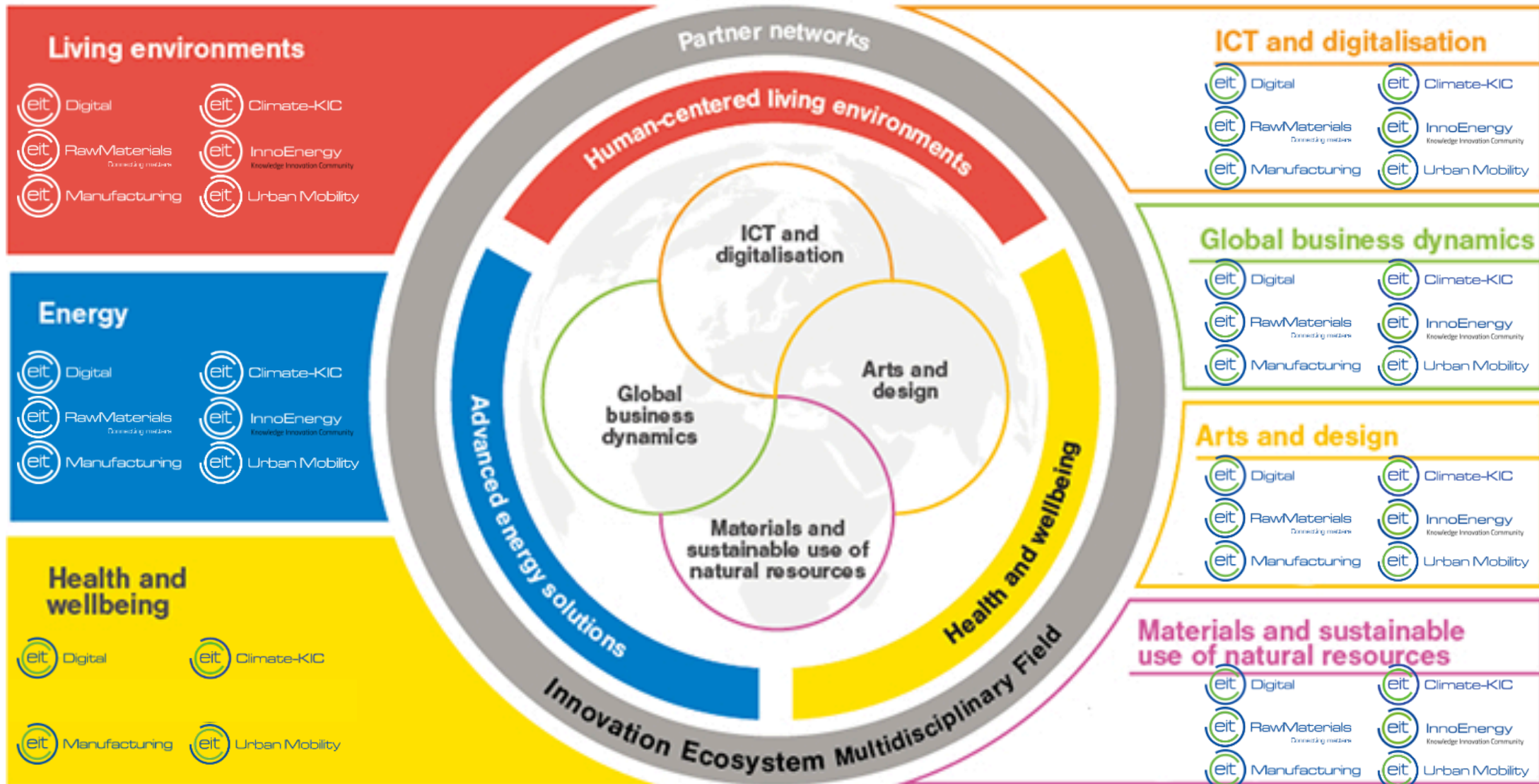
Materials Platform

Experience Platform

Entrepreneurship Platform




EIT KICs on the Aalto Key Research Areas





Otaniemi Campus as an Innovation Hub

... comprise Aalto researchers, students and staff, other research institutions (e.g., VTT), corporate partners, as well as private, public and third sector actors...



**A Grid is a gateway to
Aalto's international
network of resources,
talented students and
cutting-edge research
and technology**

A creative community for startups

**25 000 m² cooperation hub
for creating new ways of
working with 120+ startups,
small-size companies,
creative businesses,
networks, maker's spaces**

- ESA business accelerator
- UN Technology and Innovation lab
- Espoo City Services

Creating with corporate partners

Research and Insight

Jointly funded research

Corporate-funded research

Joint positions: professors,
post-docs, PhD students

Talent and Skills

Course collaboration &
study projects

Master & Bachelor theses

Employer services & fairs

Visibility on campus

Executive and professional
development (Aalto EE)

Campus and Ecosystems

Campus membership and
shared spaces

Use of infrastructure and
services

Aalto networks and
platforms

Innovation and start-up
ecosystem

Partnership

Highlights - *Innovation Ecosystem*

Cumulative 2013 - 2017

Number of
commissioned
projects with
companies

1041

70 to 100

companies
are founded every year
in our ecosystem

MIT has rated Aalto's
innovation ecosystem
among the

top-5

rising stars in the world

729

number of invention
disclosures

157

number of technology
transfers

The logo consists of a large, stylized white letter 'A' followed by a double quote symbol, set against a dark background.

A"

Aalto University

Towards a better world.



aalto.fi