

CREATION OF A DIGITAL TWIN:

# framery **Smart Booth**

Miika Valtonen  
Senior Solution Architect

**REMION**  
Digitizing machine business.

**Starting from Scratch**

# framery O

SILENCE

HAPPINESS

STYLE

SPACE EFFICIENCY



VENTILATION

WORK LIGHT

CHAIR

DESK

ELECTRICAL OUTLET

Making it **Smart** with **IoT**

## TECHNICAL HEALTH

FAN PERFORMANCE  
LIGHT OPERATION  
SENSOR COMMUNICATION

## ENVIRONMENTAL CONDITIONS

AIR QUALITY ANALYSIS  
LIGHT LEVEL MONITORING

## USER POSTURE

STANDING AND SITTING DETECTION

## UTILIZATION RATE

AVAILABILITY AND BOOTH TIME

## MULTIFUNCTIONAL LIGHTING

RESERVATION STATUS  
FEEDBACK REGISTRATION  
MOOD LIGHTING

## USER HAPPINESS

GESTURAL FEEDBACK

## USER ACTIVITY

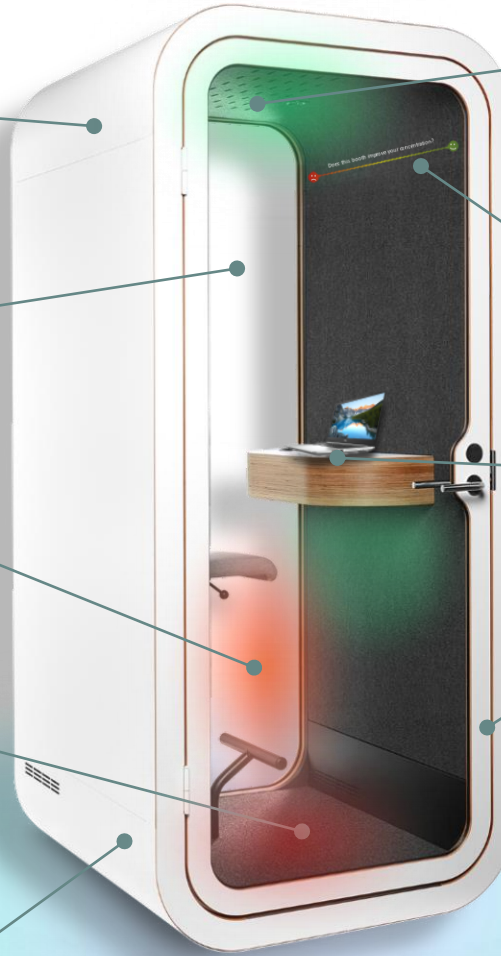
TABLE TOUCH AND OBJECT DETECTION

## DOOR OPERATION

TOUCH AND MOVEMENT DETECTION

## PEOPLE FLOW

HUMAN PRESENCE  
NEAR THE BOOTH



## CLOUD SERVICE

WIRELESS DATA DELIVERY  
AND PROCESSING



# Creating the **Digital Twin**





## RAW IOT DATA

MEASUREMENT SIGNALS  
EVENTS



## PROCESSED DATA

HUMAN PRODUCTIVITY  
ENVIRONMENTAL QUALITY  
TECHNICAL RELIABILITY



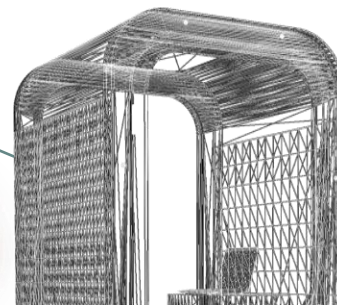
## IDENTIFYING DATA

QR CODE  
CUSTOMER



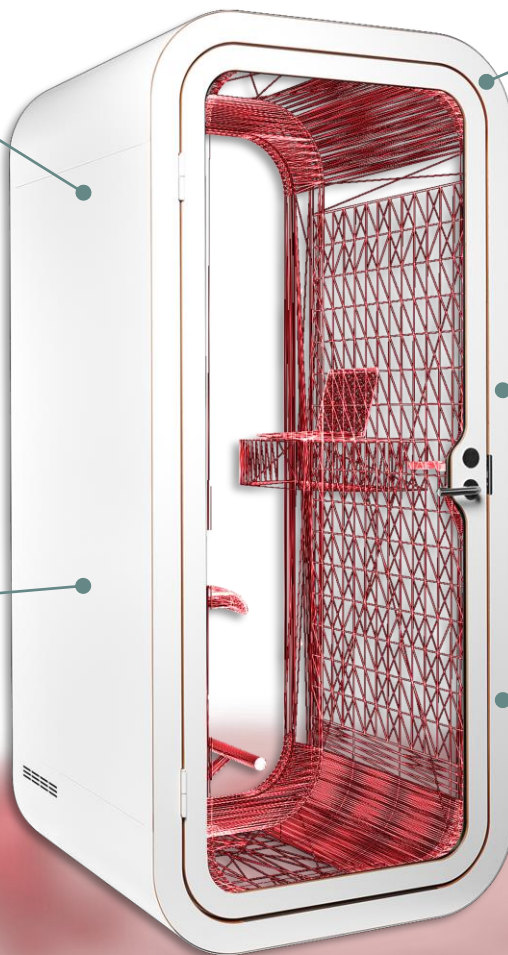
## LOCATION DATA

FLOOR PLAN



## 3D MODEL

BOOTH STRUCTURE

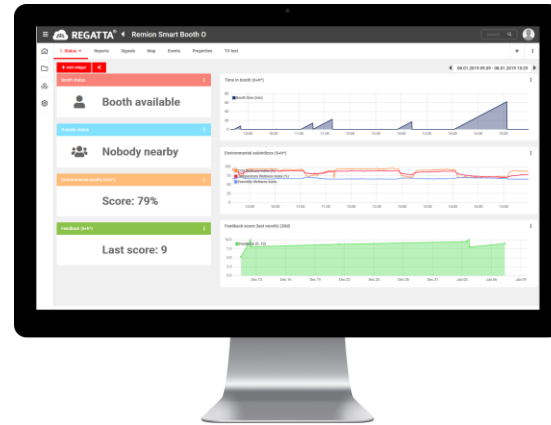




# Views into the Digital Twin



LIVE 3D VIEW

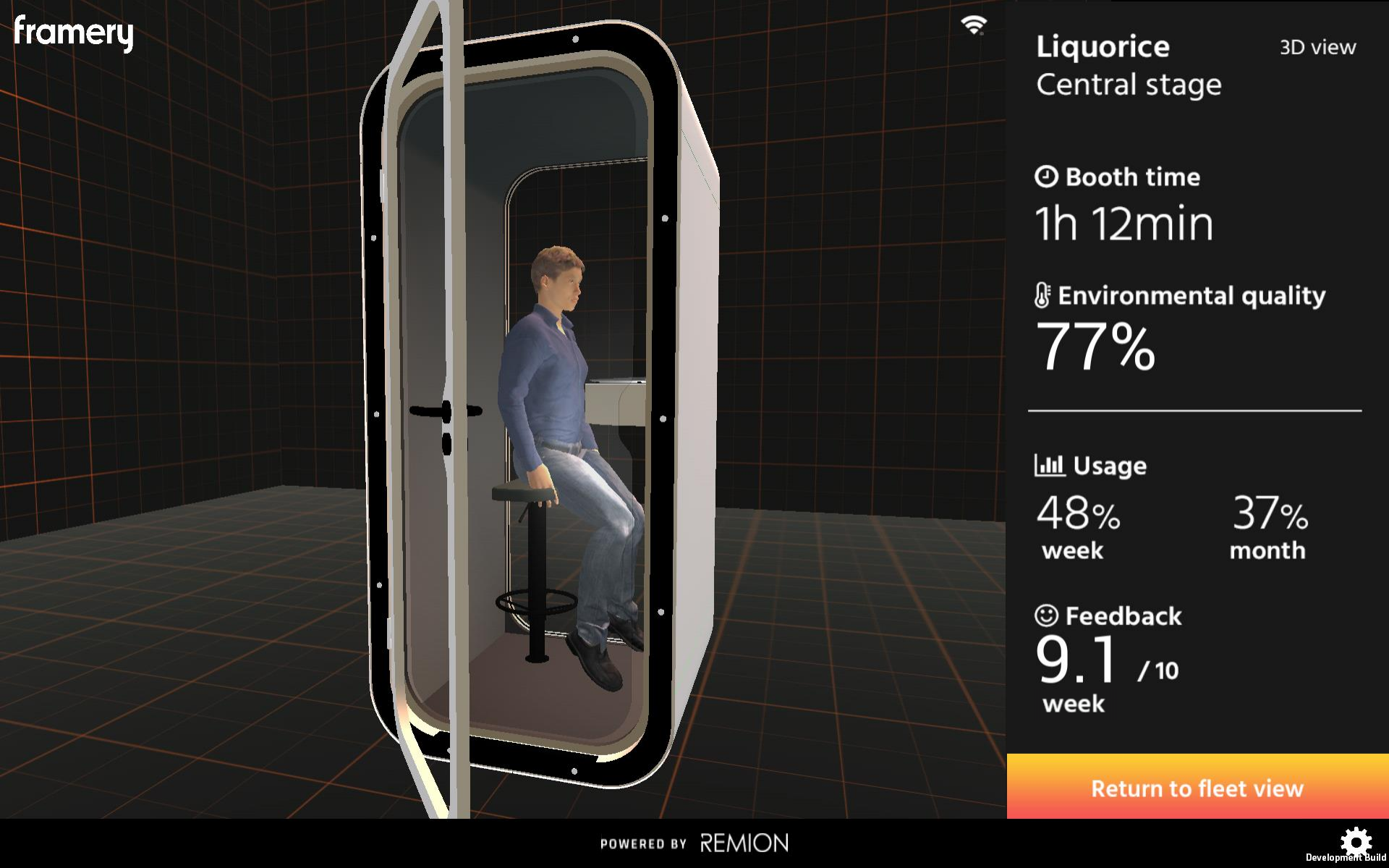


HISTORICAL TRENDS  
AND PATTERNS



LOCATION-AWARE  
HEATMAPS





Liquorice  
Central stage

3D view

🕒 Booth time  
1h 12min

🌡️ Environmental quality  
77%

📊 Usage  
48% week      37% month

😊 Feedback  
9.1 / 10 week

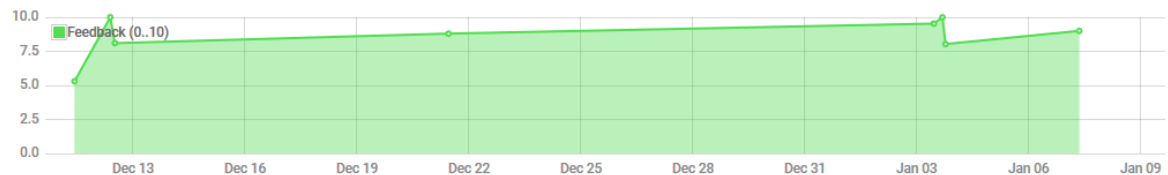
Return to fleet view

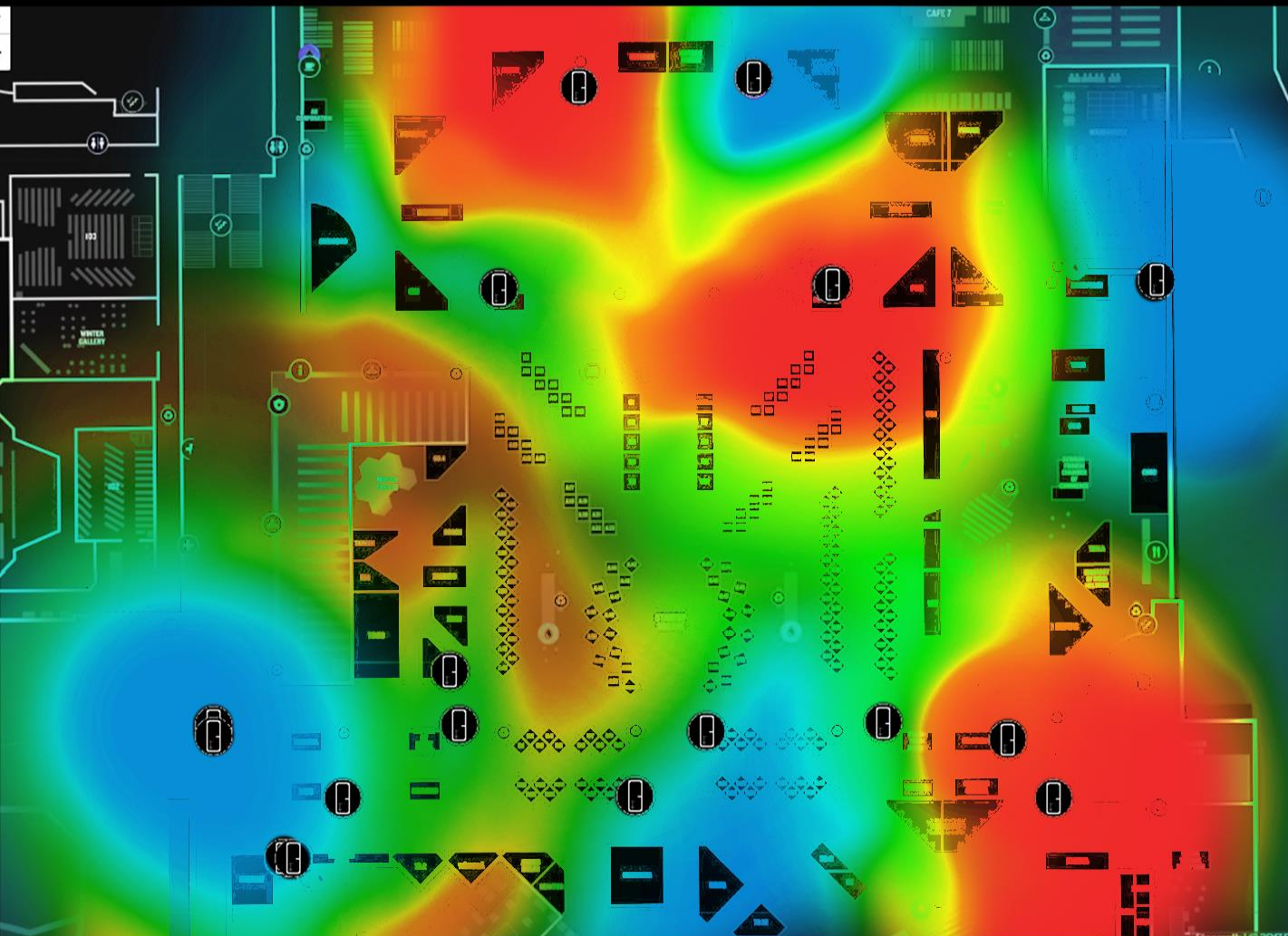


**Score: 79%**

**Last score: 9**

...





# framery

Choose displayed heatmap

 Utilization

 Session duration

 Usage type

 Customer feedback

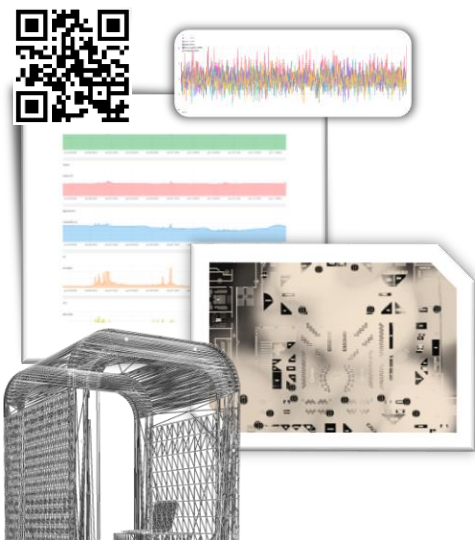
 Environmental quality

Color separation



POWERED BY REMION

# Value Creation



DESIGN AND IOT **DATA**

DATA ACCESS



DATA



MULTIPURPOSE  
IOT **TOOL**



**USERS**

AVAILABILITY, FEEDBACK



**FACILITY MANAGER**

PRODUCTIVITY, LAYOUT,  
ENVIRONMENTAL QUALITY



**HR MANAGER**

USER HAPPINESS, USAGE DIARY



**BUILDING ARCHITECT**

PEOPLE FLOW



**DESIGNERS**

USAGE TYPES AND FEEDBACK



**SERVICE PERSONNEL**

TECHNICAL RELIABILITY



**BRAND MANAGER**

FEEDBACK SCORE



**SALES PERSONNEL**

GEOGRAPHICAL AND  
CUSTOMER-SPECIFIC UTILIZATION

INFORMATION



USAGE



REMION

Digitizing machine business.